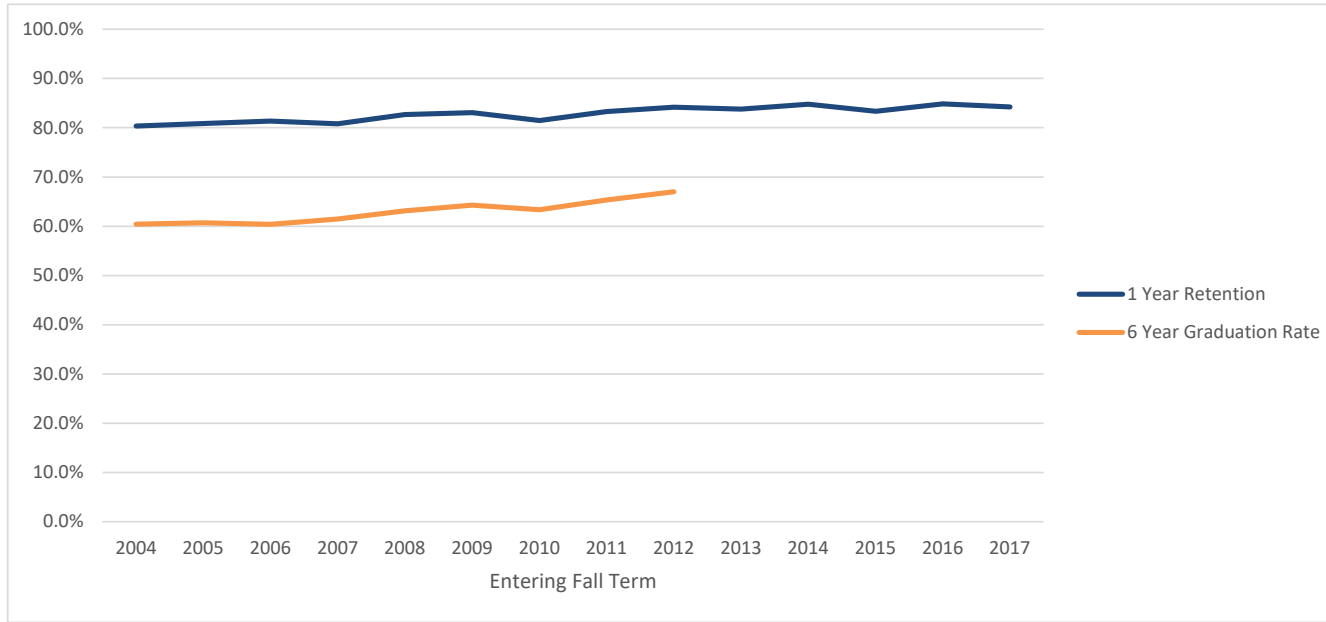


Retention and Graduation Rates of First-time, Full-time Degree Seeking Freshmen

OSU Total



Entering Fall Term	2004	2005	2006	2007	2008	2009	2010	2011	2012	2013	2014	2015	2016	2017
Cohort	2894	2795	2782	2973	3003	3314	3480	3335	3321	3553	3453	3340	3523	3421
1 Year Retention	80.3%	80.9%	81.3%	80.8%	82.7%	83.1%	81.4%	83.3%	84.2%	83.8%	84.8%	83.4%	84.8%	84.2%
6 Year Graduation Rate	60.4%	60.7%	60.4%	61.5%	63.1%	64.3%	63.3%	65.3%	67.0%					

Cohort: first-time college, full-time degree seeking undergraduates admitted for fall term or preceding summer term.

First-time: never matriculated as degree-seeking students at another college or university.

Full-time: enrolled in 12 or more credit hours in first fall term.

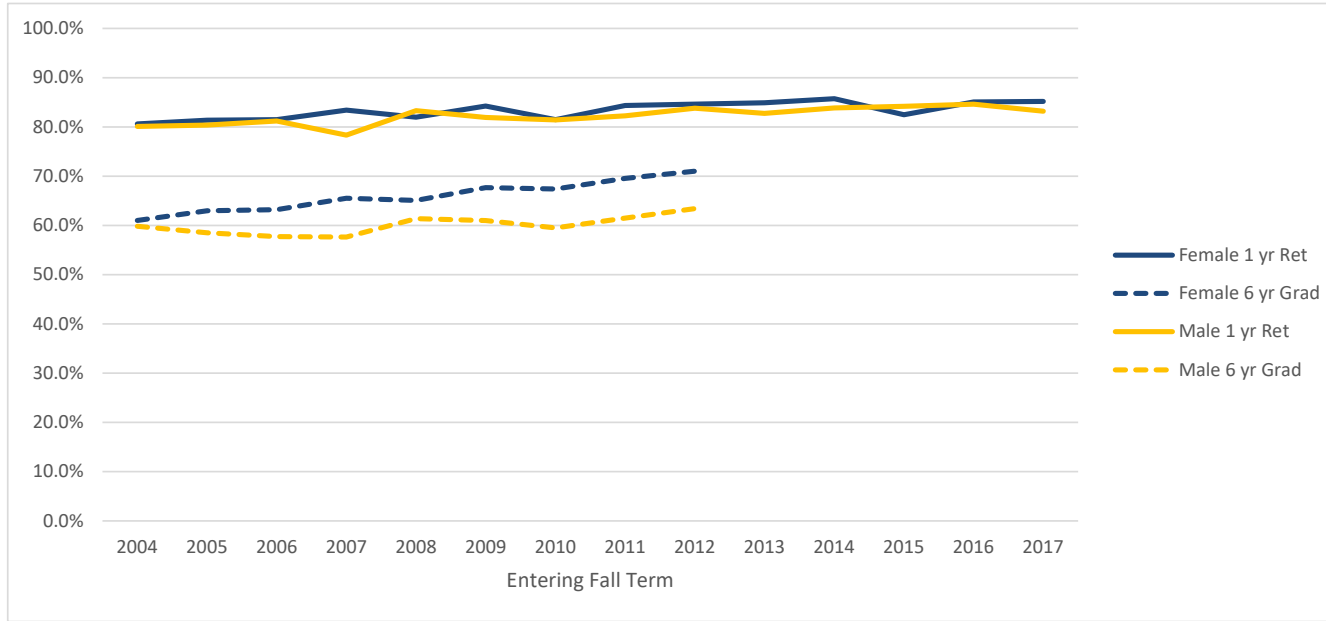
Retained: enrolled in a subsequent fall term but not yet graduated.

Graduated: received first bachelor's degree by the summer before the given following fall term.

Example, 6 year graduation counts degrees earned up to the summer before the seventh fall term.

Retention and Graduation Rates of First-time, Full-time Degree Seeking Freshmen

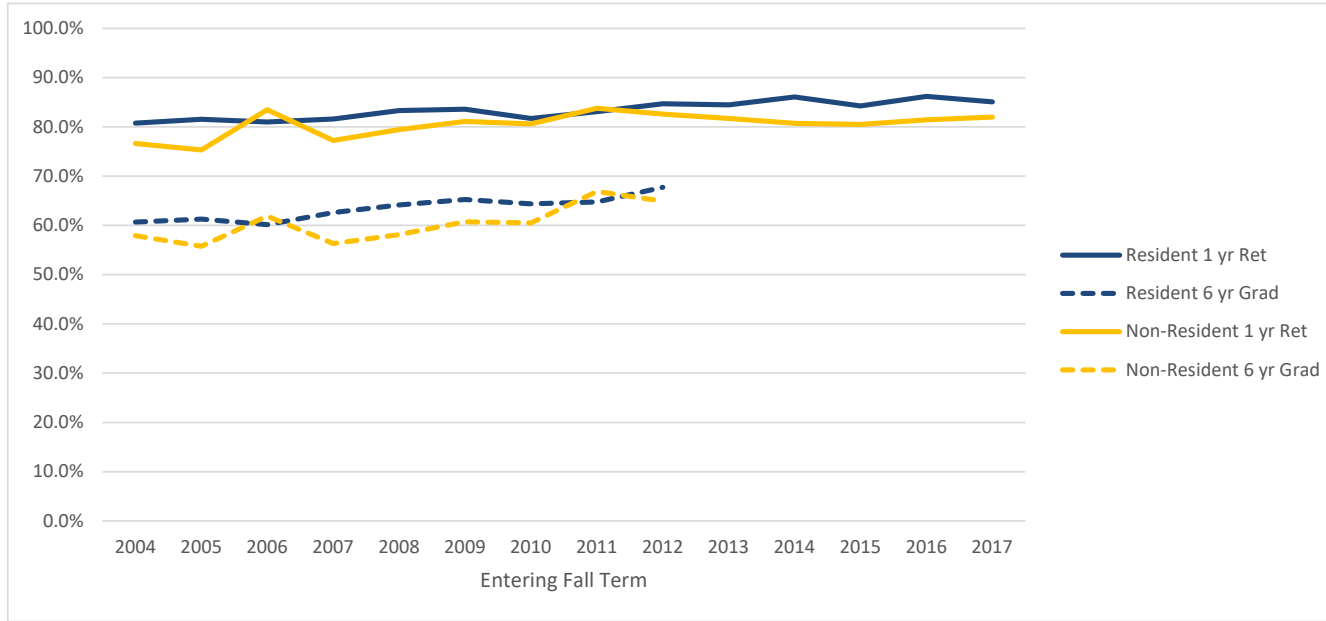
Female/ Male



Entering Fall Term	2004	2005	2006	2007	2008	2009	2010	2011	2012	2013	2014	2015	2016	2017
Female	1408	1359	1356	1436	1421	1621	1679	1599	1580	1706	1689	1597	1735	1660
Female 1 yr Ret	80.6%	81.4%	81.5%	83.4%	82.0%	84.3%	81.5%	84.4%	84.6%	84.9%	85.7%	82.5%	85.1%	85.2%
Female 6 yr Grad	61.0%	63.0%	63.2%	65.5%	65.1%	67.7%	67.4%	69.5%	71.0%					
Male	1486	1436	1426	1537	1582	1693	1801	1736	1741	1847	1764	1743	1788	1761
Male 1 yr Ret	80.1%	80.4%	81.2%	78.3%	83.3%	81.9%	81.4%	82.3%	83.8%	82.7%	83.8%	84.2%	84.6%	83.2%
Male 6 yr Grad	59.8%	58.5%	57.7%	57.6%	61.4%	61.0%	59.5%	61.5%	63.4%					

Retention and Graduation Rates of First-time, Full-time Degree Seeking Freshmen

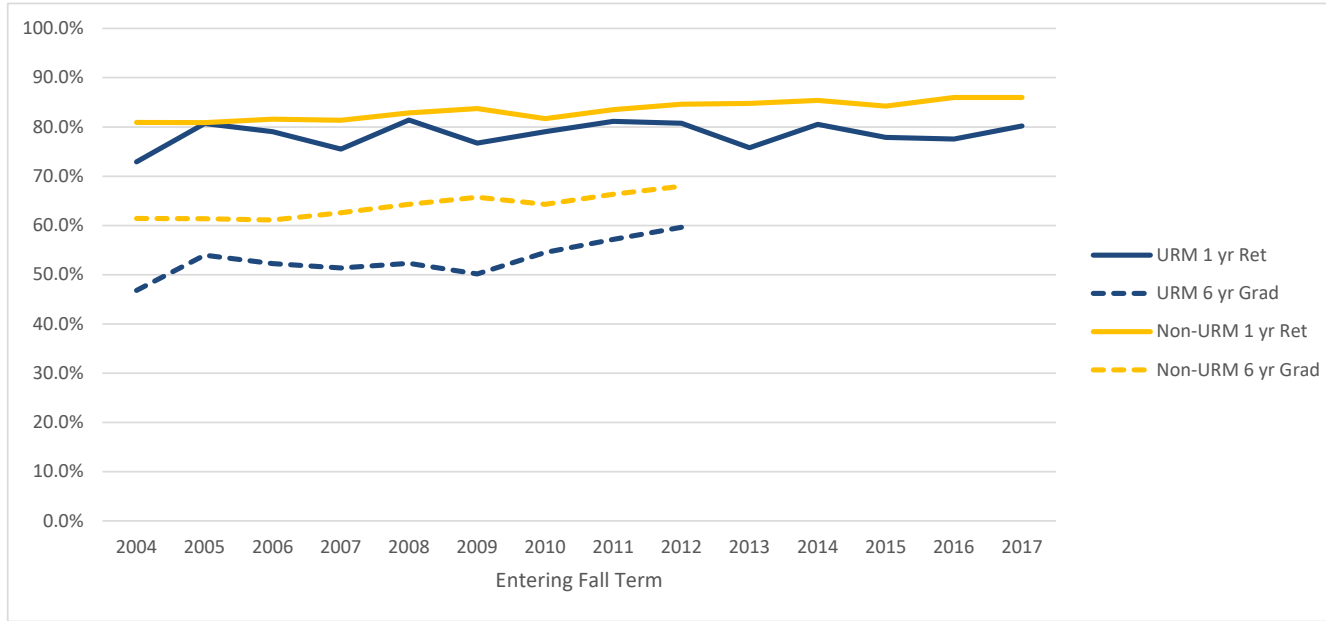
Oregon Resident/ Non-Resident



Entering Fall Term	2004	2005	2006	2007	2008	2009	2010	2011	2012	2013	2014	2015	2016	2017
Resident	2590	2483	2407	2433	2492	2588	2551	2459	2489	2633	2591	2546	2515	2406
Resident 1 yr Ret	80.8%	81.6%	81.0%	81.6%	83.3%	83.6%	81.7%	83.1%	84.7%	84.5%	86.1%	84.2%	86.2%	85.1%
Resident 6 yr Grad	60.7%	61.3%	60.2%	62.6%	64.2%	65.3%	64.4%	64.8%	67.7%					
Non-Resident	304	312	375	540	511	726	929	876	832	920	862	794	1008	1015
Non-Resident 1 yr Ret	76.6%	75.3%	83.5%	77.2%	79.5%	81.1%	80.6%	83.8%	82.6%	81.7%	80.7%	80.5%	81.4%	82.0%
Non-Resident 6 yr Grad	57.9%	55.8%	61.9%	56.3%	58.1%	60.7%	60.5%	66.9%	64.9%					

Retention and Graduation Rates of First-time, Full-time Degree Seeking Freshmen

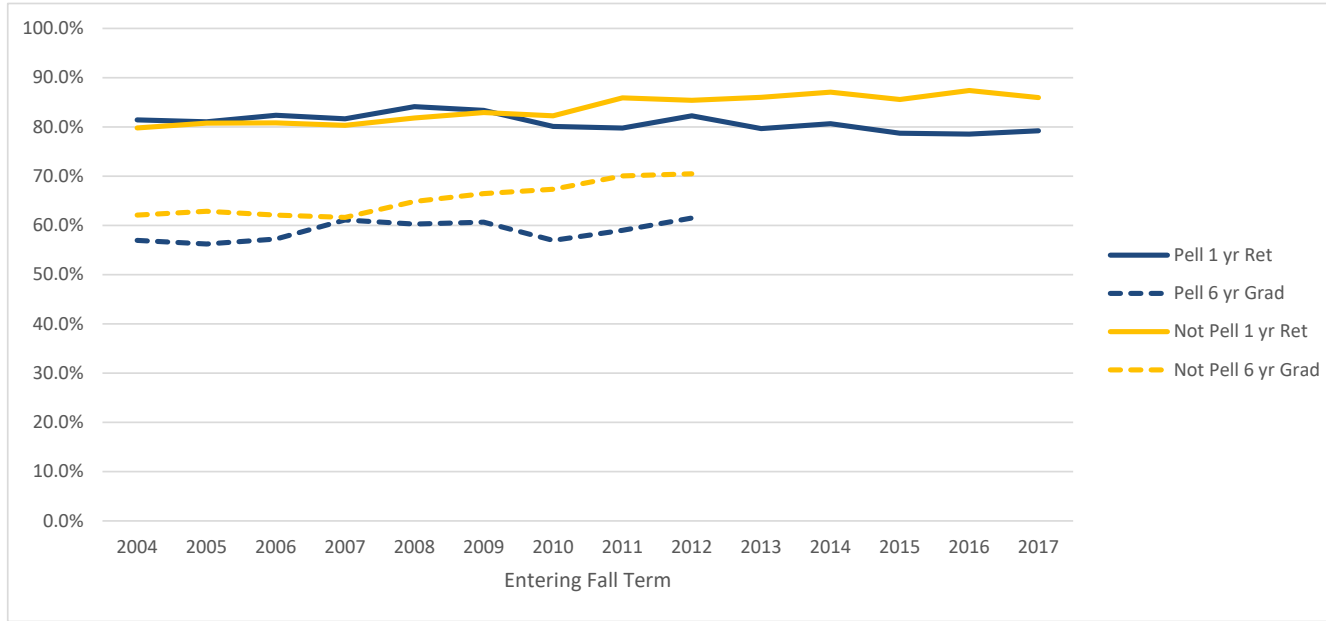
Underrepresented Minority (African American, American Indian/Alaska Native, Hispanic, Native Hawaiian/Pacific Islander)/ Non-URM



Entering Fall Term	2004	2005	2006	2007	2008	2009	2010	2011	2012	2013	2014	2015	2016	2017
URM	203	254	224	294	285	309	334	355	369	400	437	452	477	475
URM 1 yr Ret	72.9%	80.7%	79.0%	75.5%	81.4%	76.7%	79.0%	81.1%	80.8%	75.8%	80.5%	77.9%	77.6%	80.2%
URM 6 yr Grad	46.8%	53.9%	52.2%	51.4%	52.3%	50.2%	54.5%	57.2%	59.6%					
Non-URM	2691	2541	2558	2679	2718	3005	3146	2980	2952	3153	3016	2888	3046	2946
Non-URM 1 yr Ret	80.9%	80.9%	81.5%	81.4%	82.8%	83.7%	81.7%	83.5%	84.6%	84.8%	85.4%	84.2%	86.0%	86.0%
Non-URM 6 yr Grad	61.4%	61.4%	61.1%	62.6%	64.3%	65.7%	64.3%	66.3%	68.0%					

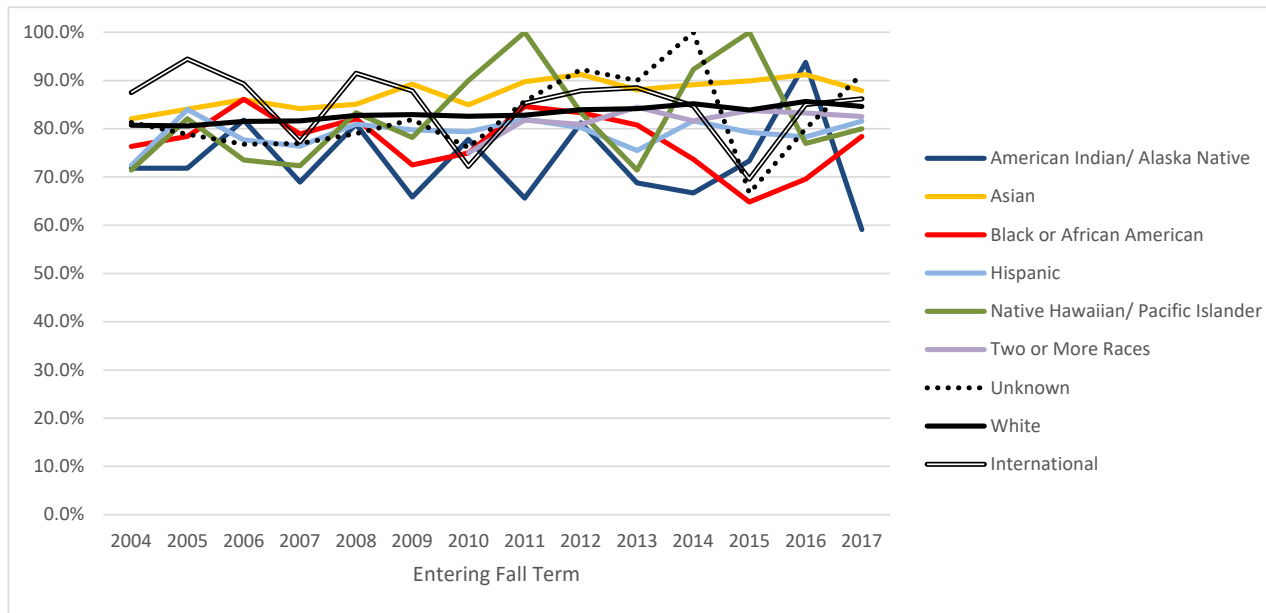
Retention and Graduation Rates of First-time, Full-time Degree Seeking Freshmen

Pell/ Not-Pell



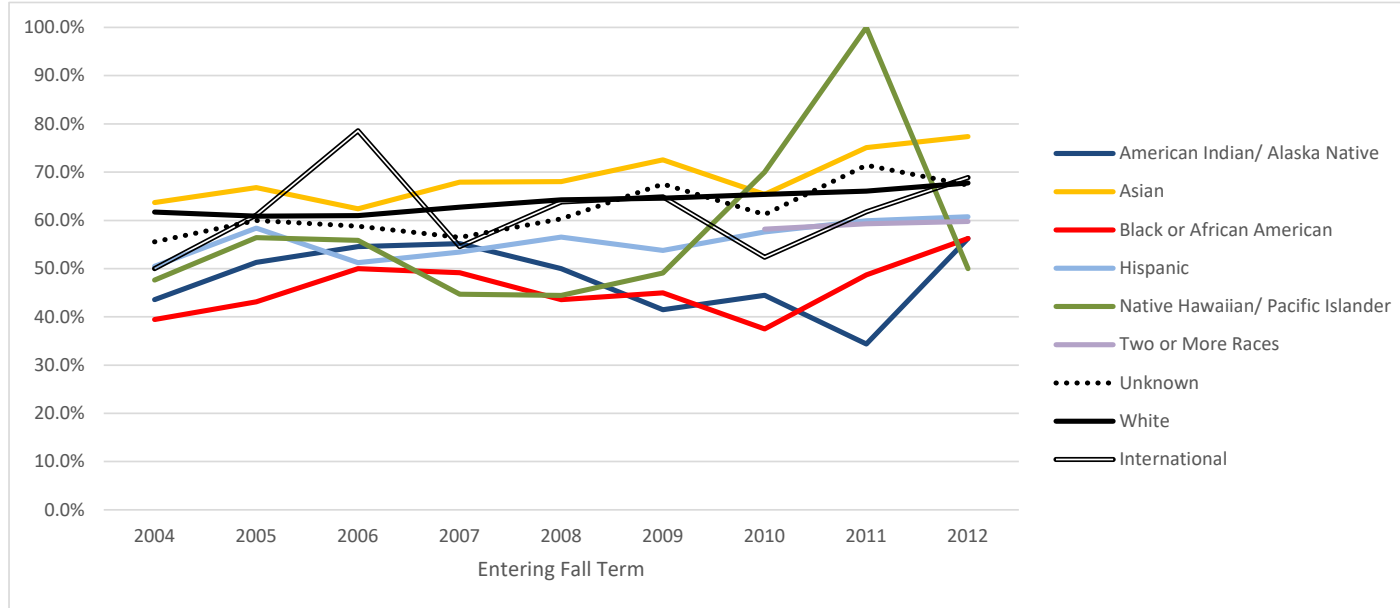
Entering Fall Term	2004	2005	2006	2007	2008	2009	2010	2011	2012	2013	2014	2015	2016	2017
Pell	964	923	975	1047	1127	1256	1348	1423	1278	1254	1229	1091	1016	919
Pell 1 yr Ret	81.4%	81.0%	82.4%	81.7%	84.1%	83.4%	80.1%	79.8%	82.2%	79.7%	80.6%	78.7%	78.5%	79.2%
Pell 6 yr Grad	57.0%	56.2%	57.2%	61.1%	60.2%	60.7%	57.0%	59.0%	61.5%					
Not Pell	1930	1872	1807	1926	1876	2058	2132	1912	2043	2299	2224	2249	2507	2502
Not Pell 1 yr Ret	79.8%	80.8%	80.8%	80.3%	81.8%	82.9%	82.3%	85.9%	85.4%	86.0%	87.1%	85.6%	87.4%	86.0%
Not Pell 6 yr Grad	62.1%	62.9%	62.1%	61.6%	64.9%	66.5%	67.4%	70.0%	70.5%					

Ethnic Group 1 Year Retention Rates



Entering Fall Term	2004	2005	2006	2007	2008	2009	2010	2011	2012	2013	2014	2015	2016	2017
American Indian/ Alaska Native	39 71.8%	39 71.8%	33 81.8%	29 69.0%	42 81.0%	41 65.9%	27 77.8%	32 65.6%	16 81.3%	16 68.8%	21 66.7%	15 73.3%	16 93.8%	22 59.1%
Asian	223 82.1%	232 84.1%	250 86.0%	290 84.1%	288 85.1%	353 89.2%	266 85.0%	293 89.8%	274 91.2%	285 88.1%	340 89.1%	318 89.9%	352 91.2%	289 87.9%
Black or African American	38 76.3%	51 78.4%	36 86.1%	57 78.9%	39 82.1%	40 72.5%	40 75.0%	39 84.6%	48 83.3%	52 80.8%	38 73.7%	54 64.8%	69 69.6%	51 78.4%
Hispanic	105 72.4%	125 84.0%	121 77.7%	161 76.4%	168 81.0%	173 79.8%	257 79.4%	277 81.9%	293 80.2%	318 75.5%	365 81.6%	371 79.2%	392 78.3%	402 81.6%
Native Hawaiian/ Pacific Islander	21 71.4%	39 82.1%	34 73.5%	47 72.3%	36 83.3%	55 78.2%	10 90.0%	7 100.0%	12 83.3%	14 71.4%	13 92.3%	12 100.0%	13 76.9%	5 80.0%
Two or More Races							220 75.0%	236 81.8%	267 80.9%	309 84.5%	283 81.6%	296 83.8%	287 83.3%	309 82.5%
Unknown	171 81.3%	180 78.9%	267 76.8%	269 77.0%	252 79.0%	188 81.9%	67 76.1%	21 85.7%	52 92.3%	30 90.0%	20 100.0%	15 66.7%	20 80.0%	23 91.3%
White	2281 80.7%	2111 80.6%	2013 81.5%	2076 81.6%	2131 82.8%	2390 82.9%	2467 82.6%	2328 82.8%	2271 83.9%	2416 84.2%	2314 85.2%	2213 83.9%	2314 85.7%	2262 84.6%
International	16 87.5%	18 94.4%	28 89.3%	44 77.3%	47 91.5%	74 87.8%	126 72.2%	102 85.3%	91 87.9%	113 88.5%	59 84.7%	46 69.6%	60 85.0%	58 86.2%

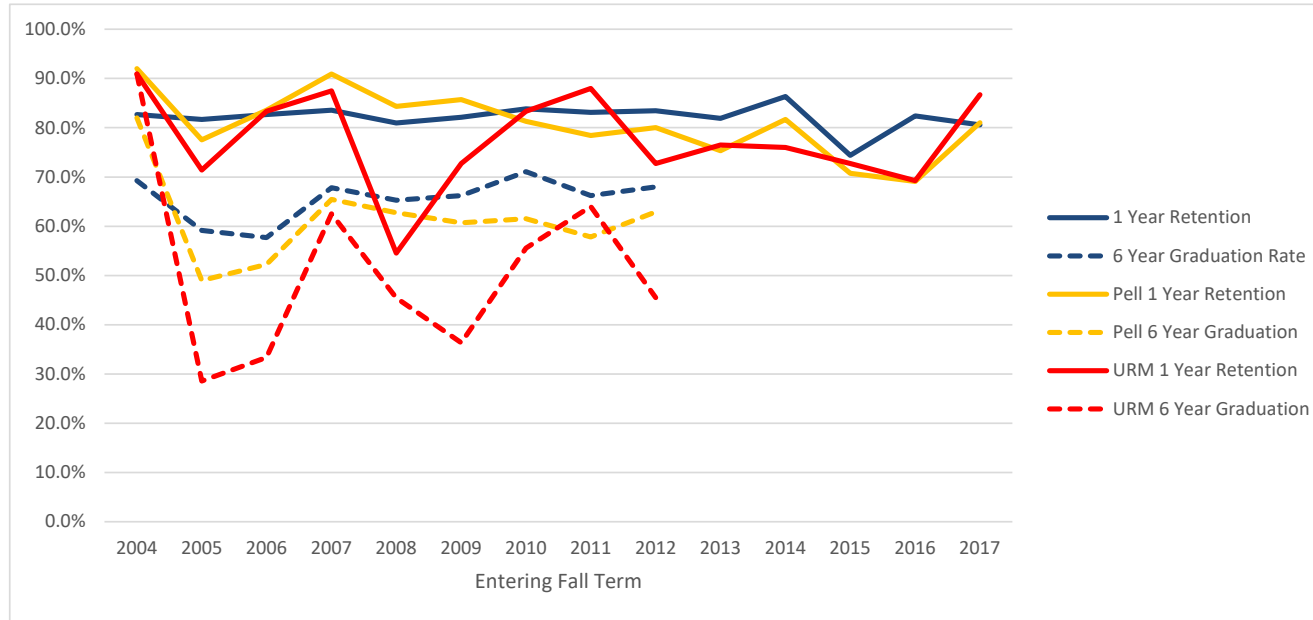
Ethnic Group 6 Year Graduation Rates



Entering Fall Term	2004	2005	2006	2007	2008	2009	2010	2011	2012	2013	2014	2015	2016	2017
American Indian/ Alaska Native	39 43.6%	39 51.3%	33 54.5%	29 55.2%	42 50.0%	41 41.5%	27 44.4%	32 34.4%	16 56.3%	16	21	15	16	22
Asian	223 63.7%	232 66.8%	250 62.4%	290 67.9%	288 68.1%	353 72.5%	266 65.4%	293 75.1%	274 77.4%	285	340	318	352	289
Black or African American	38 39.5%	51 43.1%	36 50.0%	57 49.1%	39 43.6%	40 45.0%	40 37.5%	39 48.7%	48 56.3%	52	38	54	69	51
Hispanic	105 50.5%	125 58.4%	121 51.2%	161 53.4%	168 56.5%	173 53.8%	257 57.6%	277 59.9%	293 60.8%	318	365	371	392	402
Native Hawaiian/ Pacific Islander	21 47.6%	39 56.4%	34 55.9%	47 44.7%	36 44.4%	55 49.1%	10 70.0%	7 100.0%	12 50.0%	14	13	12	13	5
Two or More Races							220 58.2%	236 59.3%	266 59.8%	309	283	296	287	309
Unknown	171 55.6%	180 60.0%	267 58.8%	269 56.5%	252 60.3%	188 67.6%	67 61.2%	21 71.4%	52 67.3%	30	20	15	20	23
White	2281 61.7%	2111 60.9%	2013 61.0%	2076 62.8%	2131 64.2%	2390 64.6%	2467 65.4%	2328 66.1%	2270 67.8%	2416	2314	2213	2314	2262
International	16 50.0%	18 61.1%	28 78.6%	44 54.5%	47 63.8%	74 64.9%	126 52.4%	102 61.8%	90 68.9%	113	59	46	60	58

Retention and Graduation Rates by College of Entering Primary Major

Agricultural Sciences

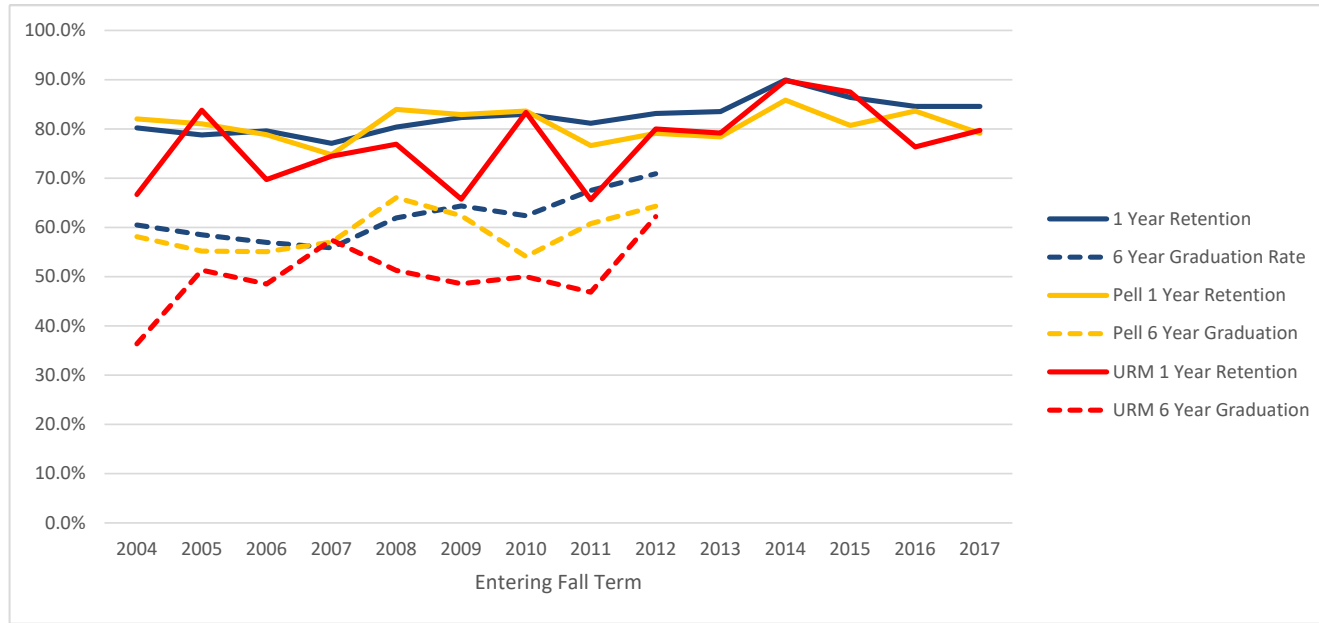


Entering Fall Term	2004	2005	2006	2007	2008	2009	2010	2011	2012	2013	2014	2015	2016	2017
Cohort	156	142	156	146	147	151	204	213	175	188	161	164	182	186
1 Year Retention	82.7%	81.7%	82.7%	83.6%	81.0%	82.1%	83.8%	83.1%	83.4%	81.9%	86.3%	74.4%	82.4%	80.6%
6 Year Graduation Rate	69.2%	59.2%	57.7%	67.8%	65.3%	66.2%	71.1%	66.2%	68.0%					
Pell	50	49	67	55	51	56	91	102	70	77	71	65	55	63
Pell 1 Year Retention	92.0%	77.6%	83.6%	90.9%	84.3%	85.7%	81.3%	78.4%	80.0%	75.3%	81.7%	70.8%	69.1%	81.0%
Pell 6 Year Graduation	82.0%	49.0%	52.2%	65.5%	62.7%	60.7%	61.5%	57.8%	62.9%					
URM	11	7	6	8	11	11	18	25	11	17	25	22	26	30
URM 1 Year Retention	90.9%	71.4%	83.3%	87.5%	54.5%	72.7%	83.3%	88.0%	72.7%	76.5%	76.0%	72.7%	69.2%	86.7%
URM 6 Year Graduation	90.9%	28.6%	33.3%	62.5%	45.5%	36.4%	55.6%	64.0%	45.5%					

- Retention and Graduation are to ANY major - not necessarily the primary major at entry.
- Pell is based on having a Pell grant at any point as an undergraduate, not just in term of entry.
- URM is standard federal Underrepresented Minority definition: American Indian/Alaska Native, Black or African American, Hispanic, Native Hawaiian/Pacific Islander

Retention and Graduation Rates by College of Entering Primary Major

Business

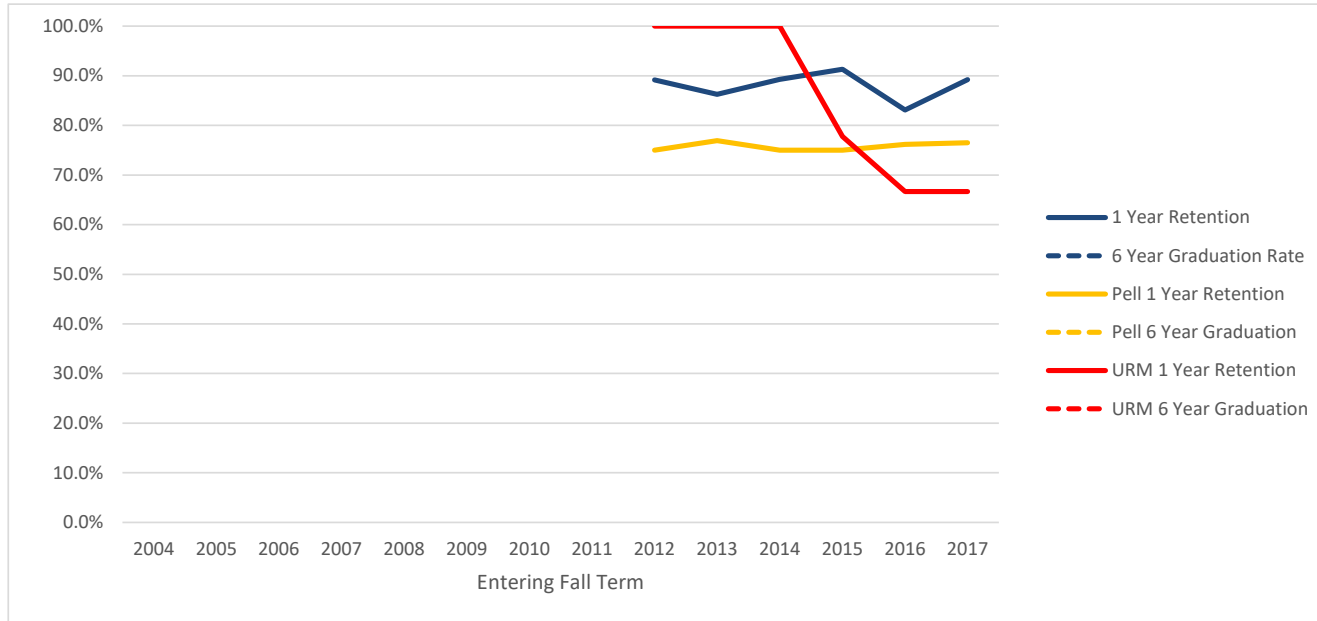


Entering Fall Term	2004	2005	2006	2007	2008	2009	2010	2011	2012	2013	2014	2015	2016	2017
Cohort	425	429	402	410	357	379	364	308	374	401	408	427	480	462
1 Year Retention	80.2%	78.8%	79.6%	77.1%	80.4%	82.3%	83.0%	81.2%	83.2%	83.5%	90.0%	86.4%	84.6%	84.6%
6 Year Graduation Rate	60.5%	58.5%	57.0%	55.9%	61.9%	64.4%	62.4%	67.5%	70.9%					
Pell	117	116	118	107	106	117	122	107	115	111	106	109	122	91
Pell 1 Year Retention	82.1%	81.0%	78.8%	74.8%	84.0%	82.9%	83.6%	76.6%	79.1%	78.4%	85.8%	80.7%	83.6%	79.1%
Pell 6 Year Graduation	58.1%	55.2%	55.1%	57.0%	66.0%	62.4%	54.1%	60.7%	64.3%					
URM	33	37	33	47	39	35	30	32	45	48	49	48	55	59
URM 1 Year Retention	66.7%	83.8%	69.7%	74.5%	76.9%	65.7%	83.3%	65.6%	80.0%	79.2%	89.8%	87.5%	76.4%	79.7%
URM 6 Year Graduation	36.4%	51.4%	48.5%	57.4%	51.3%	48.6%	50.0%	46.9%	62.2%					

- Retention and Graduation are to ANY major - not necessarily the primary major at entry.
- Pell is based on having a Pell grant at any point as an undergraduate, not just in term of entry.
- URM is standard federal Underrepresented Minority definition: American Indian/Alaska Native, Black or African American, Hispanic, Native Hawaiian/Pacific Islander

Retention and Graduation Rates by College of Entering Primary Major

Earth, Ocean, and Atmospheric Sciences

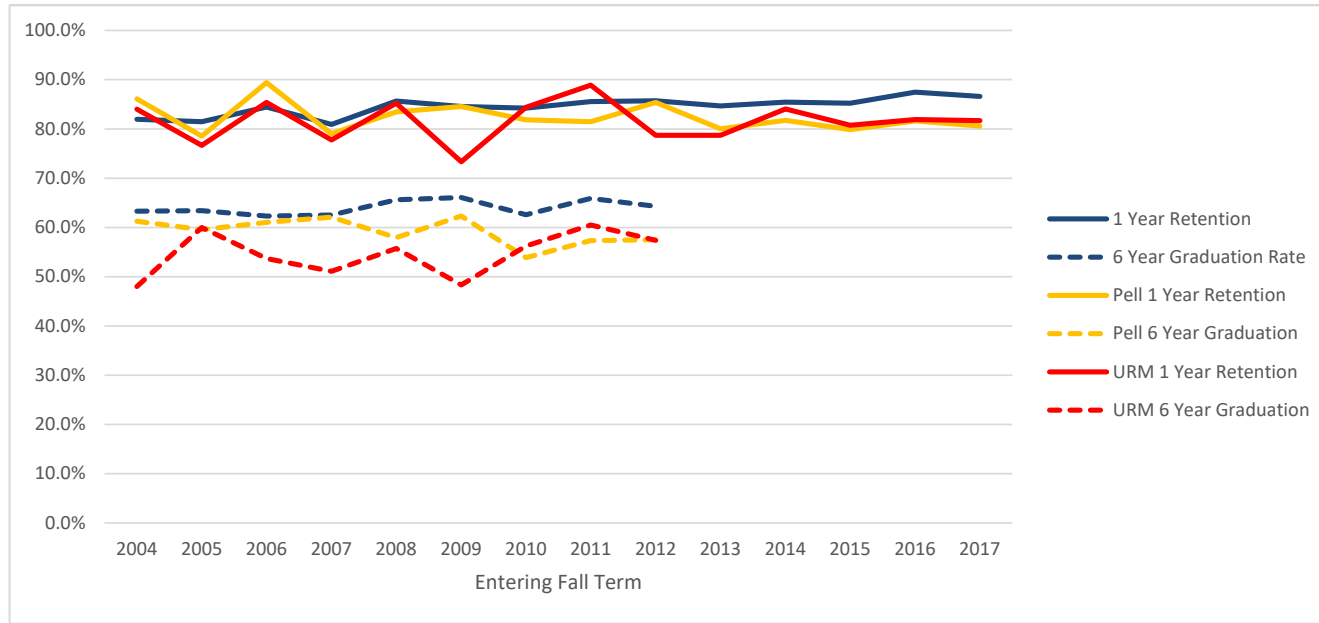


Entering Fall Term	2004	2005	2006	2007	2008	2009	2010	2011	2012	2013	2014	2015	2016	2017
Cohort									46	51	28	46	71	65
1 Year Retention									89.1%	86.3%	89.3%	91.3%	83.1%	89.2%
6 Year Graduation Rate									71.7%					
Pell									16	13	8	12	21	17
Pell 1 Year Retention									75.0%	76.9%	75.0%	75.0%	76.2%	76.5%
Pell 6 Year Graduation									62.5%					
URM									3	1	2	9	9	9
URM 1 Year Retention									100.0%	100.0%	100.0%	77.8%	66.7%	66.7%
URM 6 Year Graduation									100.0%					

- Retention and Graduation are to ANY major - not necessarily the primary major at entry.
- Pell is based on having a Pell grant at any point as an undergraduate, not just in term of entry.
- URM is standard federal Underrepresented Minority definition: American Indian/Alaska Native, Black or African American, Hispanic, Native Hawaiian/Pacific Islander

Retention and Graduation Rates by College of Entering Primary Major

Engineering

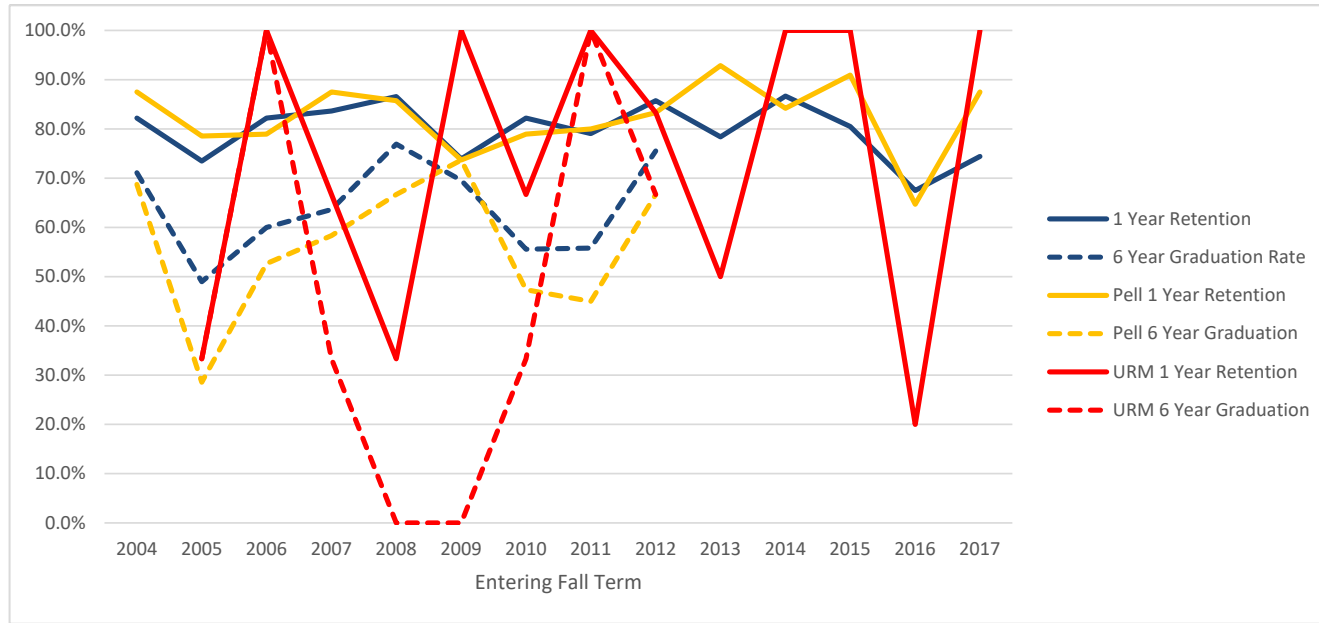


Entering Fall Term	2004	2005	2006	2007	2008	2009	2010	2011	2012	2013	2014	2015	2016	2017
Cohort	616	626	650	702	808	843	938	927	1051	1174	1125	1111	1125	1132
1 Year Retention	82.0%	81.5%	84.5%	80.9%	85.6%	84.6%	84.2%	85.5%	85.7%	84.7%	85.4%	85.2%	87.5%	86.6%
6 Year Graduation Rate	63.3%	63.4%	62.3%	62.5%	65.6%	66.1%	62.6%	65.9%	64.3%					
Pell	209	205	236	253	278	337	336	361	362	366	361	338	294	263
Pell 1 Year Retention	86.1%	78.5%	89.4%	79.1%	83.5%	84.6%	81.8%	81.4%	85.4%	80.1%	81.7%	79.9%	81.6%	80.6%
Pell 6 Year Graduation	61.2%	59.5%	61.0%	62.1%	57.9%	62.3%	53.9%	57.3%	57.5%					
URM	25	30	41	45	61	60	64	81	94	108	113	135	116	115
URM 1 Year Retention	84.0%	76.7%	85.4%	77.8%	85.2%	73.3%	84.4%	88.9%	78.7%	78.7%	84.1%	80.7%	81.9%	81.7%
URM 6 Year Graduation	48.0%	60.0%	53.7%	51.1%	55.7%	48.3%	56.3%	60.5%	57.4%					

- Retention and Graduation are to ANY major - not necessarily the primary major at entry.
- Pell is based on having a Pell grant at any point as an undergraduate, not just in term of entry.
- URM is standard federal Underrepresented Minority definition: American Indian/Alaska Native, Black or African American, Hispanic, Native Hawaiian/Pacific Islander

Retention and Graduation Rates by College of Entering Primary Major

Forestry

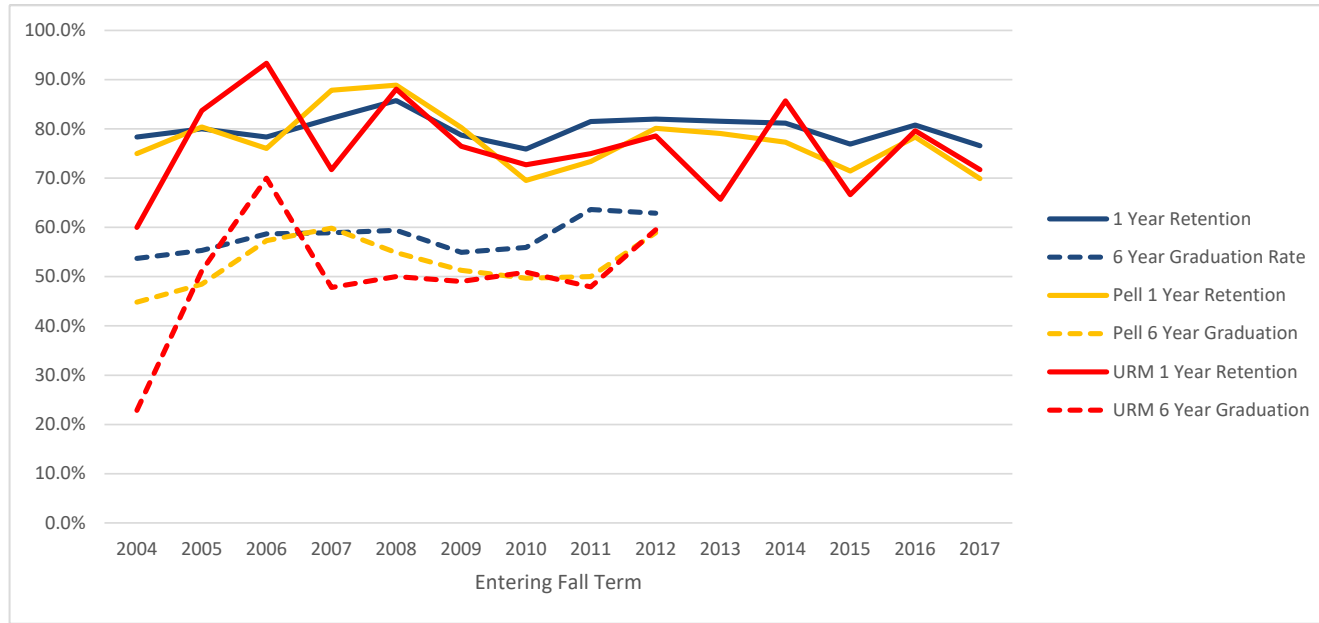


Entering Fall Term	2004	2005	2006	2007	2008	2009	2010	2011	2012	2013	2014	2015	2016	2017
Cohort	45	49	45	55	52	46	45	43	49	37	45	41	40	43
1 Year Retention	82.2%	73.5%	82.2%	83.6%	86.5%	73.9%	82.2%	79.1%	85.7%	78.4%	86.7%	80.5%	67.5%	74.4%
6 Year Graduation Rate	71.1%	49.0%	60.0%	63.6%	76.9%	69.6%	55.6%	55.8%	75.5%					
Pell	16	14	19	24	21	19	19	20	24	14	19	11	17	8
Pell 1 Year Retention	87.5%	78.6%	78.9%	87.5%	85.7%	73.7%	78.9%	80.0%	83.3%	92.9%	84.2%	90.9%	64.7%	87.5%
Pell 6 Year Graduation	68.8%	28.6%	52.6%	58.3%	66.7%	73.7%	47.4%	45.0%	66.7%					
URM	0	3	2	3	3	1	3	1	6	2	1	6	5	3
URM 1 Year Retention		33.3%	100.0%	66.7%	33.3%	100.0%	66.7%	100.0%	83.3%	50.0%	100.0%	100.0%	20.0%	100.0%
URM 6 Year Graduation		33.3%	100.0%	33.3%	0.0%	0.0%	33.3%	100.0%	66.7%					

- Retention and Graduation are to ANY major - not necessarily the primary major at entry.
- Pell is based on having a Pell grant at any point as an undergraduate, not just in term of entry.
- URM is standard federal Underrepresented Minority definition: American Indian/Alaska Native, Black or African American, Hispanic, Native Hawaiian/Pacific Islander

Retention and Graduation Rates by College of Entering Primary Major

Liberal Arts

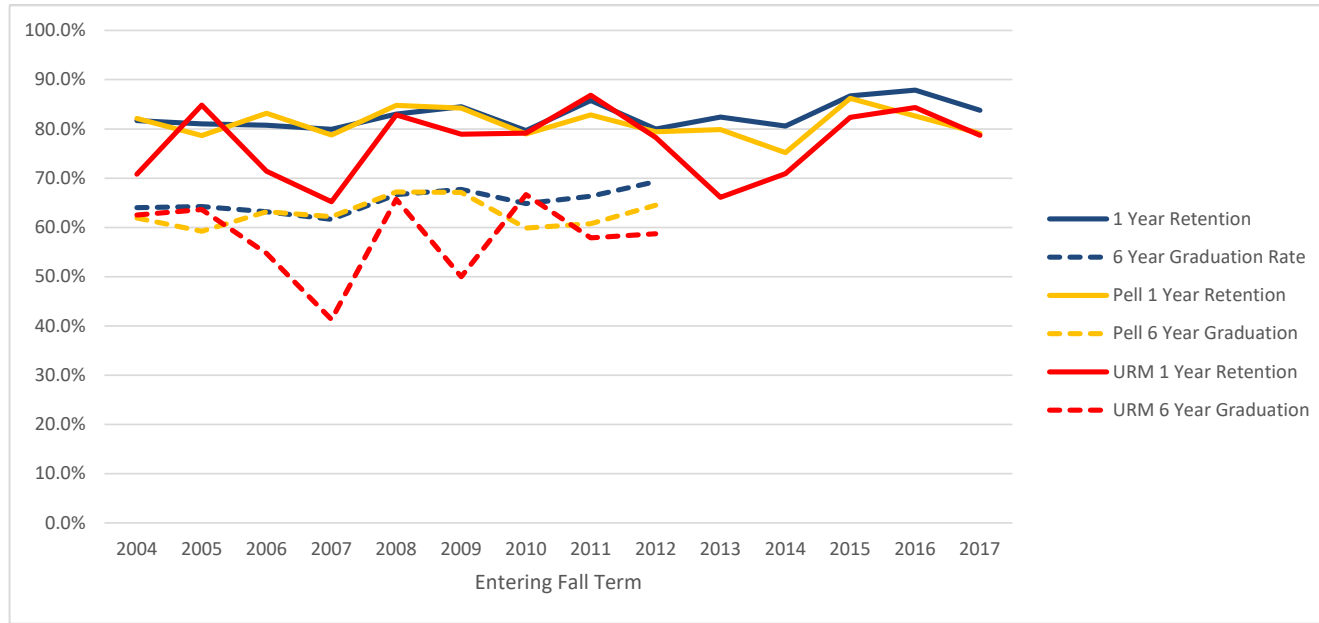


Entering Fall Term	2004	2005	2006	2007	2008	2009	2010	2011	2012	2013	2014	2015	2016	2017
Cohort	337	300	305	353	330	395	386	341	278	336	297	286	364	299
1 Year Retention	78.3%	80.0%	78.4%	82.2%	85.8%	78.7%	75.9%	81.5%	82.0%	81.5%	81.1%	76.9%	80.8%	76.6%
6 Year Graduation Rate	53.7%	55.3%	58.7%	58.9%	59.4%	54.9%	56.0%	63.6%	62.9%					
Pell	116	97	96	132	144	152	151	154	141	129	119	98	111	103
Pell 1 Year Retention	75.0%	80.4%	76.0%	87.9%	88.9%	80.3%	69.5%	73.4%	80.1%	79.1%	77.3%	71.4%	78.4%	69.9%
Pell 6 Year Graduation	44.8%	48.5%	57.3%	59.8%	54.9%	51.3%	49.7%	50.0%	58.9%					
URM	35	43	30	46	42	51	55	48	42	35	49	51	54	53
URM 1 Year Retention	60.0%	83.7%	93.3%	71.7%	88.1%	76.5%	72.7%	75.0%	78.6%	65.7%	85.7%	66.7%	79.6%	71.7%
URM 6 Year Graduation	22.9%	51.2%	70.0%	47.8%	50.0%	49.0%	50.9%	47.9%	59.5%					

- Retention and Graduation are to ANY major - not necessarily the primary major at entry.
- Pell is based on having a Pell grant at any point as an undergraduate, not just in term of entry.
- URM is standard federal Underrepresented Minority definition: American Indian/Alaska Native, Black or African American, Hispanic, Native Hawaiian/Pacific Islander

Retention and Graduation Rates by College of Entering Primary Major

Public Health and Human Sciences

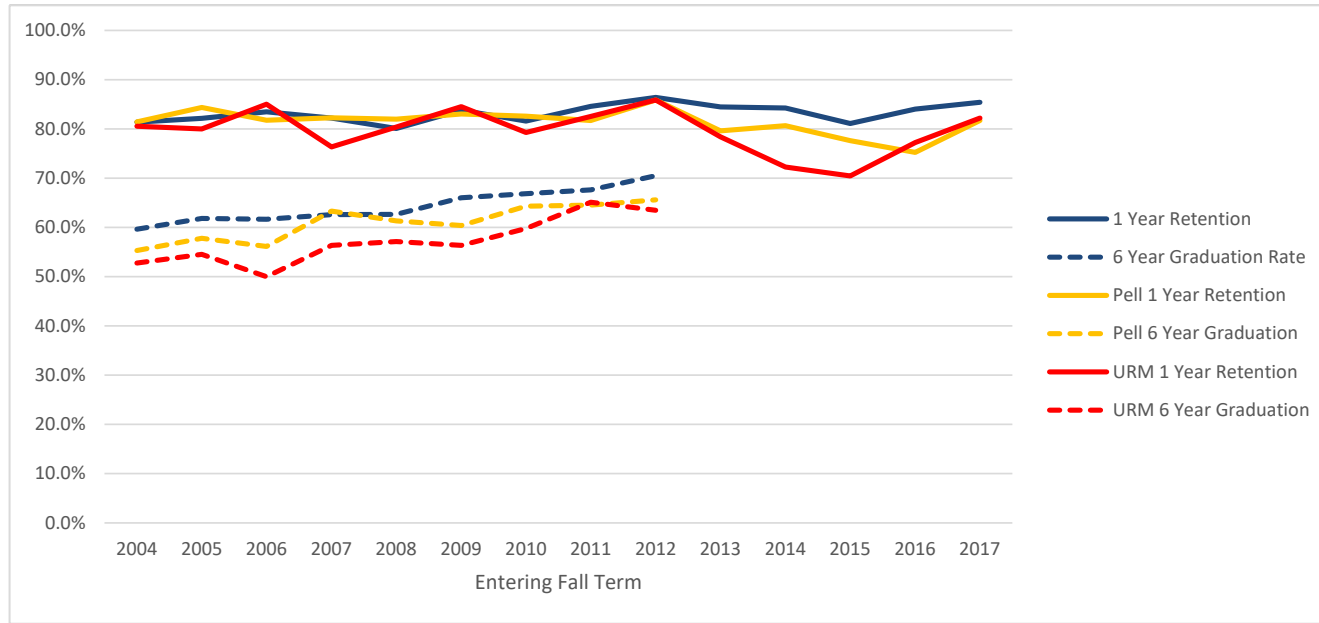


Entering Fall Term	2004	2005	2006	2007	2008	2009	2010	2011	2012	2013	2014	2015	2016	2017
Cohort	289	358	364	378	318	406	418	407	355	364	330	286	297	247
1 Year Retention	81.7%	81.0%	80.8%	79.9%	83.0%	84.5%	79.7%	85.7%	80.0%	82.4%	80.6%	86.7%	87.9%	83.8%
6 Year Graduation Rate	64.0%	64.2%	63.2%	61.6%	66.7%	67.7%	64.8%	66.3%	69.3%					
Pell	84	103	125	127	125	146	157	181	141	134	133	116	92	67
Pell 1 Year Retention	82.1%	78.6%	83.2%	78.7%	84.8%	84.2%	79.0%	82.9%	79.4%	79.9%	75.2%	86.2%	82.6%	79.1%
Pell 6 Year Graduation	61.9%	59.2%	63.2%	62.2%	67.2%	67.1%	59.9%	60.8%	64.5%					
URM	24	33	42	46	35	38	48	38	46	59	55	51	51	47
URM 1 Year Retention	70.8%	84.8%	71.4%	65.2%	82.9%	78.9%	79.2%	86.8%	78.3%	66.1%	70.9%	82.4%	84.3%	78.7%
URM 6 Year Graduation	62.5%	63.6%	54.8%	41.3%	65.7%	50.0%	66.7%	57.9%	58.7%					

- Retention and Graduation are to ANY major - not necessarily the primary major at entry.
- Pell is based on having a Pell grant at any point as an undergraduate, not just in term of entry.
- URM is standard federal Underrepresented Minority definition: American Indian/Alaska Native, Black or African American, Hispanic, Native Hawaiian/Pacific Islander

Retention and Graduation Rates by College of Entering Primary Major

Science

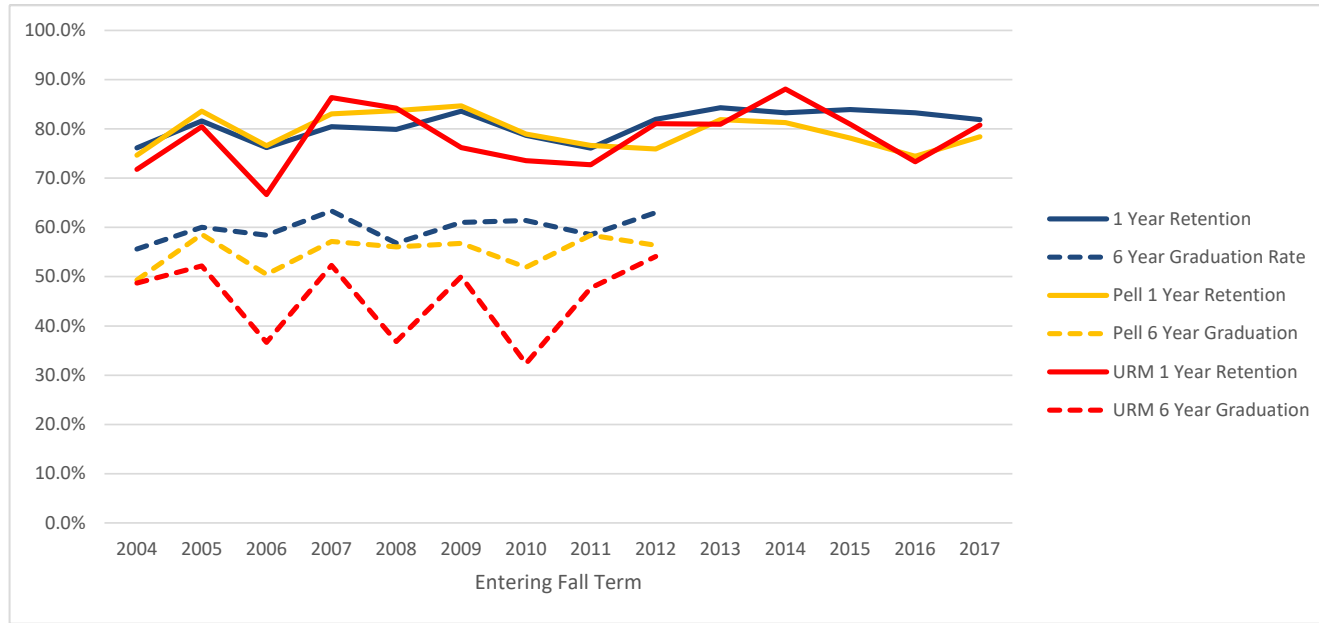


Entering Fall Term	2004	2005	2006	2007	2008	2009	2010	2011	2012	2013	2014	2015	2016	2017
Cohort	607	516	545	607	653	753	778	732	661	677	712	661	677	677
1 Year Retention	81.4%	82.2%	83.5%	82.2%	80.1%	83.8%	81.6%	84.6%	86.4%	84.5%	84.3%	81.1%	84.0%	85.4%
6 Year Graduation Rate	59.6%	61.8%	61.7%	62.6%	62.6%	66.0%	66.8%	67.6%	70.5%					
Pell	226	211	203	237	261	318	339	361	276	294	305	255	214	219
Pell 1 Year Retention	81.4%	84.4%	81.8%	82.3%	82.0%	83.0%	82.6%	81.7%	85.9%	79.6%	80.7%	77.6%	75.2%	81.7%
Pell 6 Year Graduation	55.3%	57.8%	56.2%	63.3%	61.3%	60.4%	64.3%	64.5%	65.6%					
URM	36	55	40	55	56	71	82	86	85	88	101	88	101	107
URM 1 Year Retention	80.6%	80.0%	85.0%	76.4%	80.4%	84.5%	79.3%	82.6%	85.9%	78.4%	72.3%	70.5%	77.2%	82.2%
URM 6 Year Graduation	52.8%	54.5%	50.0%	56.4%	57.1%	56.3%	59.8%	65.1%	63.5%					

- Retention and Graduation are to ANY major - not necessarily the primary major at entry.
- Pell is based on having a Pell grant at any point as an undergraduate, not just in term of entry.
- URM is standard federal Underrepresented Minority definition: American Indian/Alaska Native, Black or African American, Hispanic, Native Hawaiian/Pacific Islander

Retention and Graduation Rates by College of Entering Primary Major

University Exploratory Studies

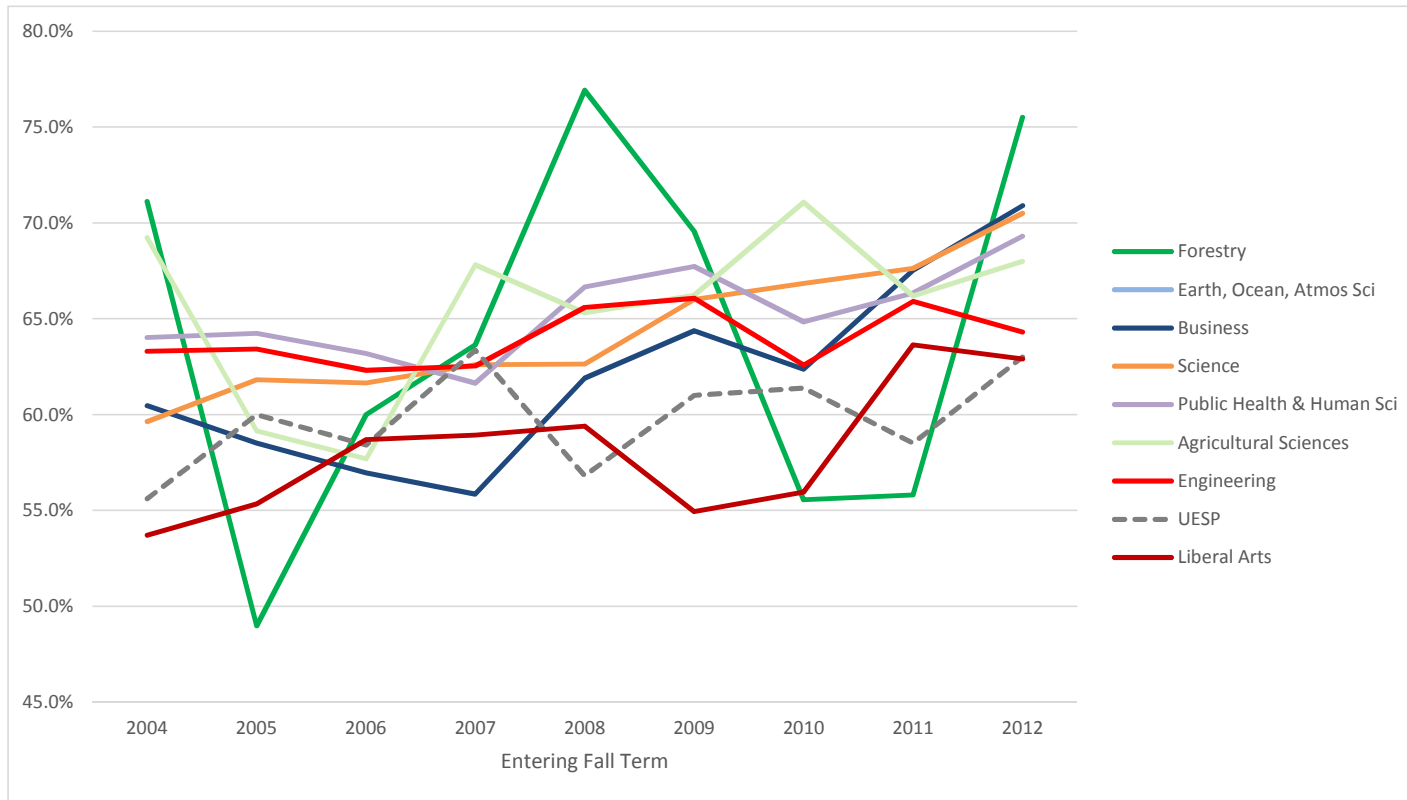


Entering Fall Term	2004	2005	2006	2007	2008	2009	2010	2011	2012	2013	2014	2015	2016	2017
Cohort	419	375	315	322	338	341	347	364	332	325	347	318	287	310
1 Year Retention	76.1%	81.6%	76.2%	80.4%	79.9%	83.6%	78.7%	76.1%	81.9%	84.3%	83.3%	84.0%	83.3%	81.9%
6 Year Graduation Rate	55.6%	60.0%	58.4%	63.4%	56.8%	61.0%	61.4%	58.5%	63.0%					
Pell	146	128	111	112	141	111	133	137	133	116	107	87	90	88
Pell 1 Year Retention	74.7%	83.6%	76.6%	83.0%	83.7%	84.7%	78.9%	76.6%	75.9%	81.9%	81.3%	78.2%	74.4%	78.4%
Pell 6 Year Graduation	49.3%	58.6%	50.5%	57.1%	56.0%	56.8%	51.9%	58.4%	56.4%					
URM	39	46	30	44	38	42	34	44	37	42	42	42	60	52
URM 1 Year Retention	71.8%	80.4%	66.7%	86.4%	84.2%	76.2%	73.5%	72.7%	81.1%	81.0%	88.1%	81.0%	73.3%	80.8%
URM 6 Year Graduation	48.7%	52.2%	36.7%	52.3%	36.8%	50.0%	32.4%	47.7%	54.1%					

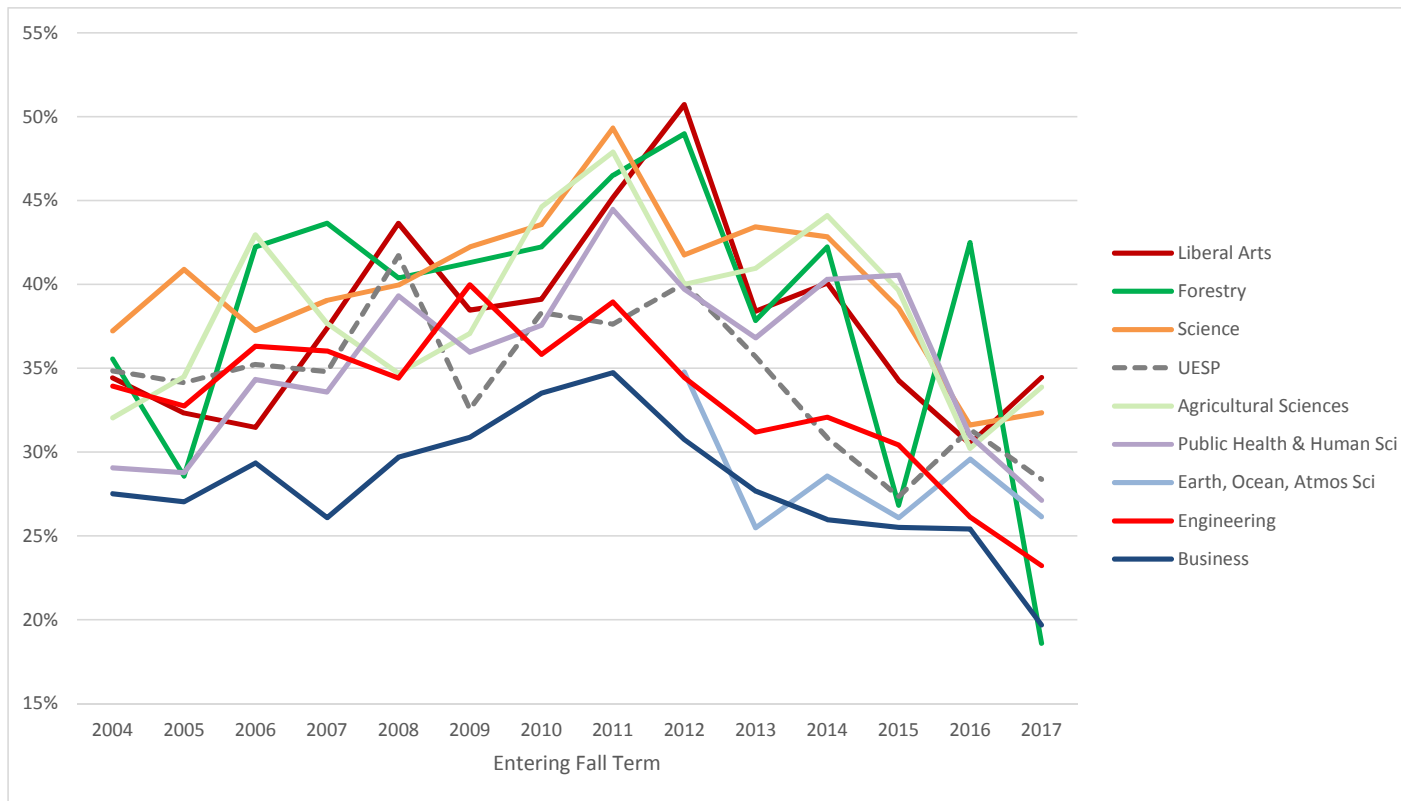
- Retention and Graduation are to ANY major - not necessarily the primary major at entry.
- Pell is based on having a Pell grant at any point as an undergraduate, not just in term of entry.
- URM is standard federal Underrepresented Minority definition: American Indian/Alaska Native, Black or African American, Hispanic, Native Hawaiian/Pacific Islander

Graduation Rate by College of Entering Primary Major

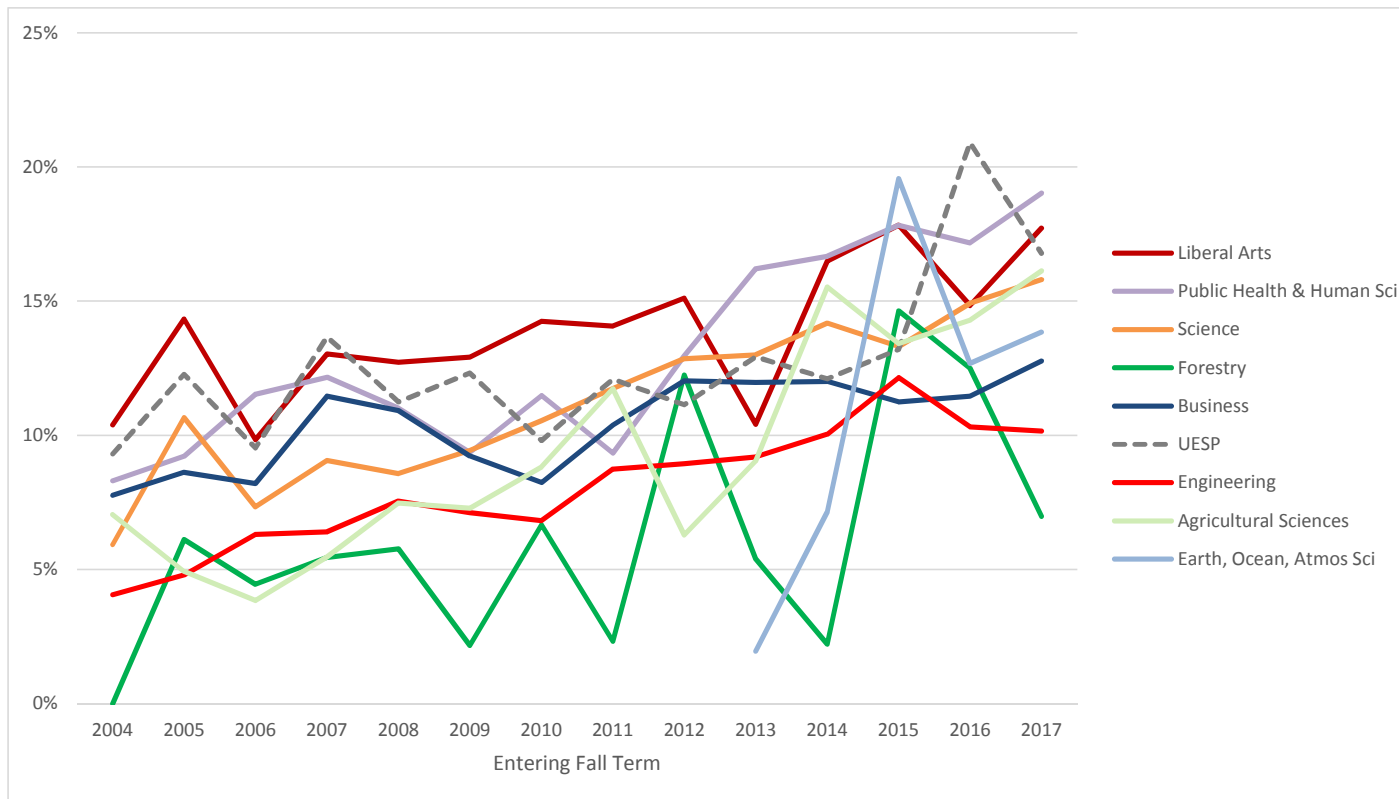
COLLEGE COMPARISON



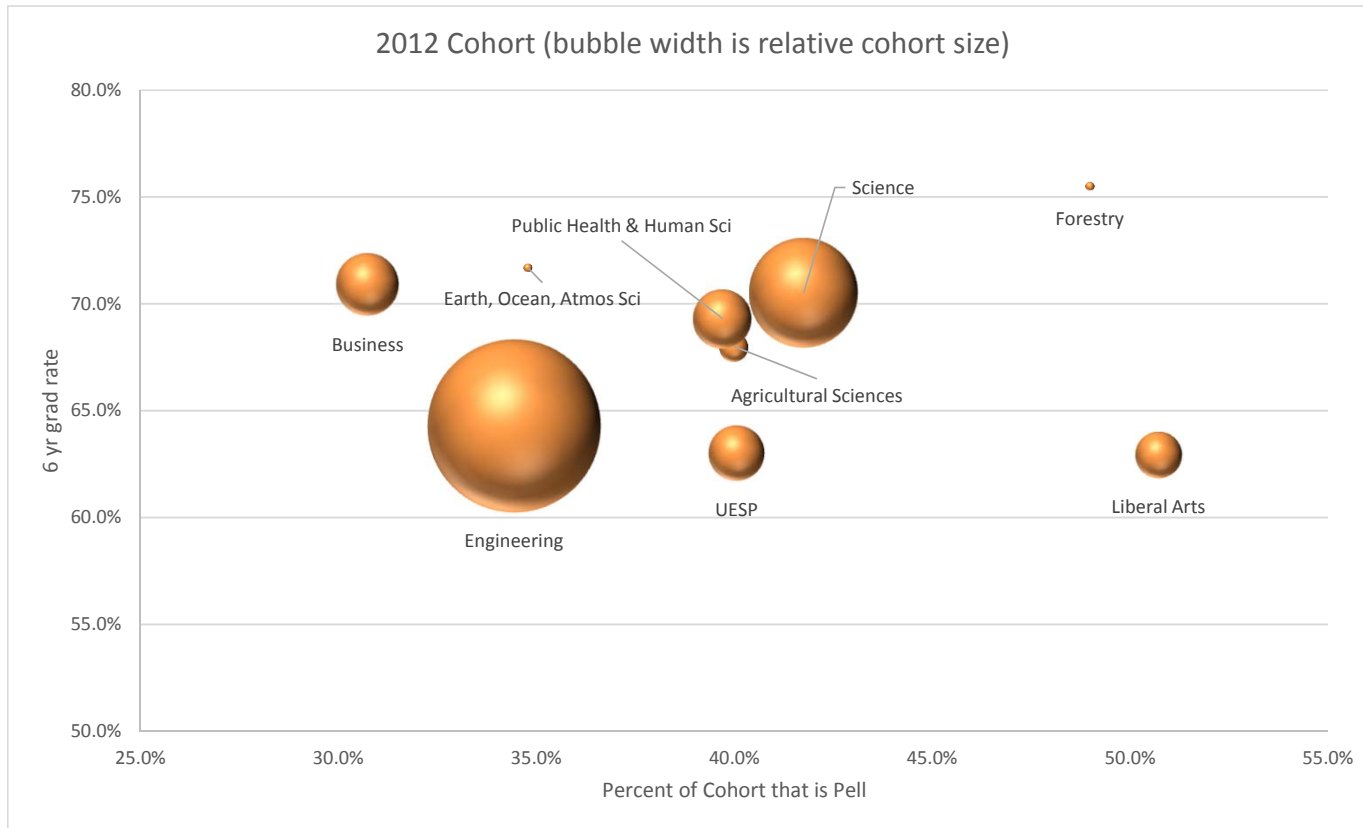
Percent of Entering Cohort that is Pell



Percent of Entering Cohort that is URM

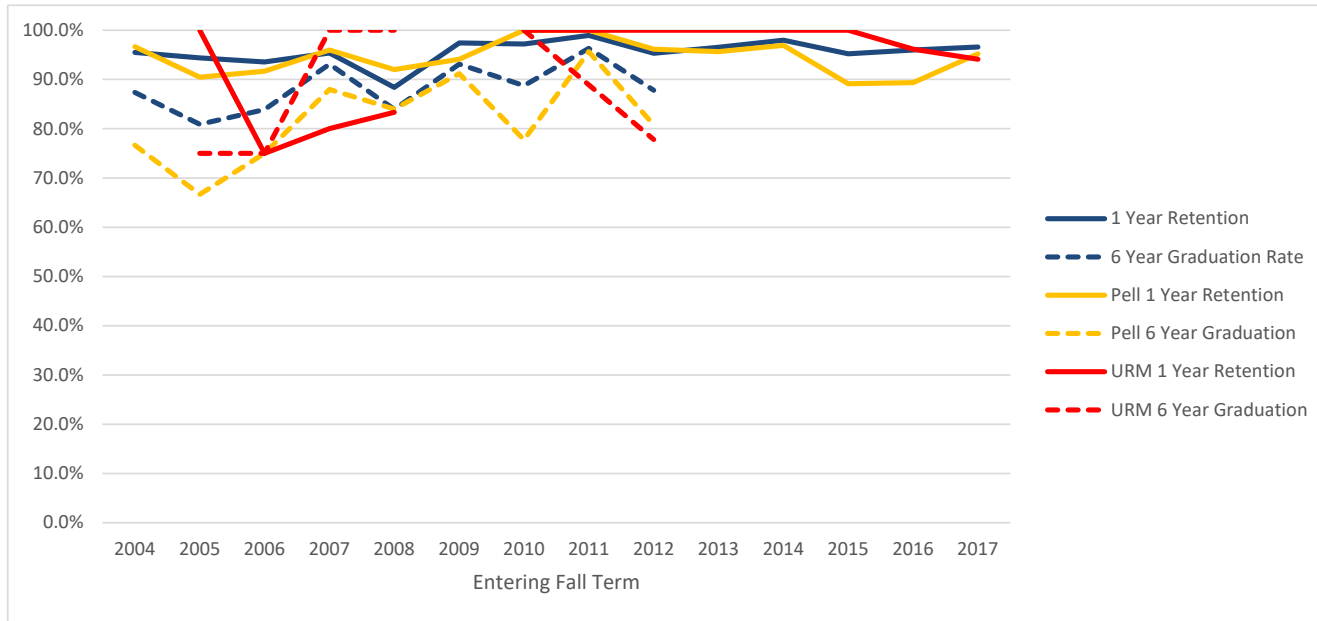


2012 College Cohort 6 yr Grad Rate by Percent Pell



Retention and Graduation Rates

University Honors College

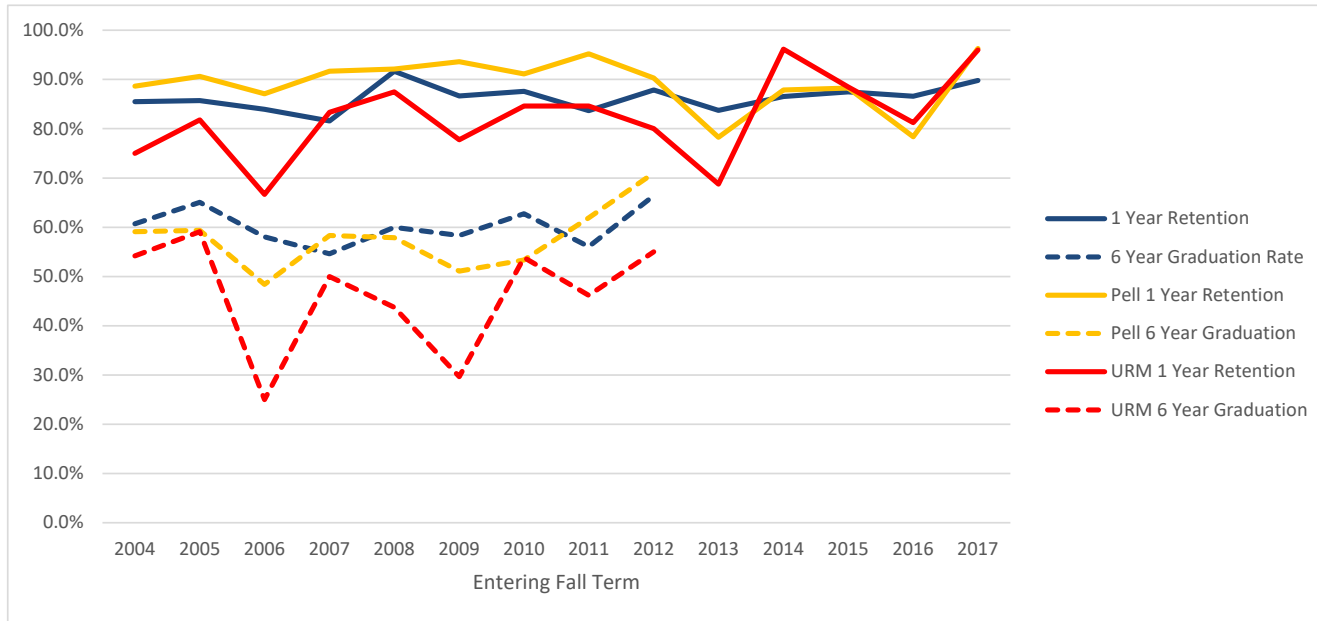


Entering Fall Term	2004	2005	2006	2007	2008	2009	2010	2011	2012	2013	2014	2015	2016	2017
Cohort	111	89	62	87	112	116	178	190	213	201	295	251	349	377
1 Year Retention	95.5%	94.4%	93.5%	95.4%	88.4%	97.4%	97.2%	98.9%	95.3%	96.5%	98.0%	95.2%	96.0%	96.6%
6 Year Graduation Rate	87.4%	80.9%	83.9%	93.1%	83.9%	93.1%	88.8%	96.3%	87.8%					
Pell	30	21	12	25	25	34	45	46	52	46	65	46	47	62
Pell 1 Year Retention	96.7%	90.5%	91.7%	96.0%	92.0%	94.1%	100.0%	100.0%	96.2%	95.7%	96.9%	89.1%	89.4%	95.2%
Pell 6 Year Graduation	76.7%	66.7%	75.0%	88.0%	84.0%	91.2%	77.8%	95.7%	80.8%					
URM	0	4	4	5	6	0	8	9	9	12	20	15	26	34
URM 1 Year Retention		100.0%	75.0%	80.0%	83.3%		100.0%	100.0%	100.0%	100.0%	100.0%	100.0%	96.2%	94.1%
URM 6 Year Graduation		75.0%	75.0%	100.0%	100.0%		100.0%	88.9%	77.8%					

- Based on Honors College identifier in first fall term
- These students are also counted in their respective college from the first fall term

Retention and Graduation Rates

Student Athletes



Entering Fall Term	2004	2005	2006	2007	2008	2009	2010	2011	2012	2013	2014	2015	2016	2017
Cohort	145	126	112	152	120	180	153	141	107	166	141	128	164	118
1 Year Retention	85.5%	85.7%	83.9%	81.6%	91.7%	86.7%	87.6%	83.7%	87.9%	83.7%	86.5%	87.5%	86.6%	89.8%
6 Year Graduation Rate	60.7%	65.1%	58.0%	54.6%	60.0%	58.3%	62.7%	56.0%	66.4%					
Pell	44	32	31	36	38	47	45	42	31	46	33	34	37	27
Pell 1 Year Retention	88.6%	90.6%	87.1%	91.7%	92.1%	93.6%	91.1%	95.2%	90.3%	78.3%	87.9%	88.2%	78.4%	96.3%
Pell 6 Year Graduation	59.1%	59.4%	48.4%	58.3%	57.9%	51.1%	53.3%	61.9%	71.0%					
URM	24	22	12	30	16	27	26	26	20	32	26	26	32	25
URM 1 Year Retention	75.0%	81.8%	66.7%	83.3%	87.5%	77.8%	84.6%	84.6%	80.0%	68.8%	96.2%	88.5%	81.3%	96.0%
URM 6 Year Graduation	54.2%	59.1%	25.0%	50.0%	43.8%	29.6%	53.8%	46.2%	55.0%					

- Based on Athlete identifier in first fall term
- These students are also counted in their respective college from the first fall term

Oregon State University
Retention and Graduation Rates of First-time, Full-time Degree Seeking Freshmen
Entering Fall Cohorts: 2004 to 2017

Year	Cohort	1 Yr Retained	2 Yr Retained	2 Yr Graduated	3 Yr Retained	3 Yr Graduated	4 Yr Retained	4 Yr Graduated	5 Yr Retained	5 Yr Graduated	6 Yr Retained	6 Yr Graduated
2004	2894	2325 80.3%	2072 71.6%	0 0.0%	1920 66.3%	53 1.8%	936 32.3%	905 31.3%	276 9.5%	1569 54.2%	127 4.4%	1748 60.4%
2005	2795	2260 80.9%	1993 71.3%	0 0.0%	1881 67.3%	35 1.3%	1000 35.8%	793 28.4%	251 9.0%	1519 54.3%	107 3.8%	1696 60.7%
2006	2782	2263 81.3%	2012 72.3%	0 0.0%	1867 67.1%	31 1.1%	984 35.4%	815 29.3%	294 10.6%	1501 54.0%	117 4.2%	1680 60.4%
2007	2973	2402 80.8%	2143 72.1%	3 0.1%	2037 68.5%	42 1.4%	1066 35.9%	878 29.5%	277 9.3%	1647 55.4%	92 3.1%	1827 61.5%
2008	3003	2483 82.7%	2214 73.7%	3 0.1%	2076 69.1%	50 1.7%	1081 36.0%	922 30.7%	331 11.0%	1685 56.1%	102 3.4%	1896 63.1%
2009	3314	2753 83.1%	2483 74.9%	4 0.1%	2319 70.0%	50 1.5%	1163 35.1%	1072 32.3%	305 9.2%	1925 58.1%	92 2.8%	2130 64.3%
2010	3480	2834 81.4%	2569 73.8%	4 0.1%	2410 69.3%	43 1.2%	1154 33.2%	1145 32.9%	312 9.0%	1995 57.3%	104 3.0%	2204 63.3%
2011	3335	2777 83.3%	2528 75.8%	2 0.1%	2341 70.2%	67 2.0%	1147 34.4%	1110 33.3%	305 9.1%	1975 59.2%	122 3.7%	2179 65.3%
2012	3321	2796 84.2%	2558 77.0%	3 0.1%	2401 72.3%	66 2.0%	1095 33.0%	1223 36.8%	317 9.5%	2029 61.1%	132 4.0%	2226 67.0%
2013	3553	2976 83.8%	2701 76.0%	7 0.2%	2495 70.2%	79 2.2%	1228 34.6%	1238 34.8%	313 8.8%	2151 60.5%		
2014	3453	2927 84.8%	2703 78.3%	4 0.1%	2537 73.5%	82 2.4%	1071 31.0%	1403 40.6%				
2015	3340	2784 83.4%	2575 77.1%	1 0.0%	2379 71.2%	88 2.6%						
2016	3523	2989 84.8%	2742 77.8%	6 0.2%								
2017	3421	2879 84.2%										

Cohort: first-time college, full-time degree seeking undergraduates admitted for fall term or preceding summer term.

First-time: never matriculated as degree-seeking students at another college or university.

Full-time: enrolled in 12 or more credit hours in first fall term.

Retained: enrolled in a subsequent fall term but not yet graduated.

Graduated: received first bachelor's degree by the summer before the given following fall term.

Example, 6 year graduation counts degrees earned up to the summer before the seventh fall term.