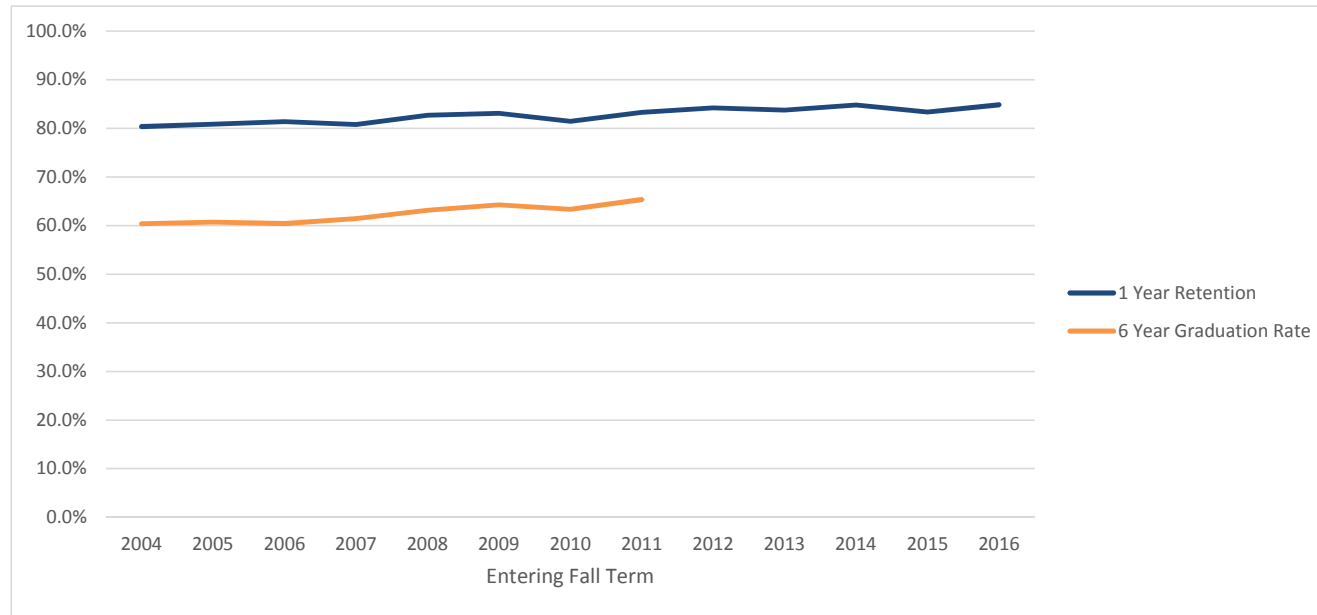


## Retention and Graduation Rates of First-time, Full-time Degree Seeking Freshmen

### OSU Total



Entering Fall Term	2004	2005	2006	2007	2008	2009	2010	2011	2012	2013	2014	2015	2016
Cohort	2894	2795	2782	2973	3003	3314	3480	3335	3324	3553	3453	3340	3523
1 Year Retention	80.3%	80.9%	81.3%	80.8%	82.7%	83.1%	81.4%	83.3%	84.2%	83.8%	84.8%	83.4%	84.8%
6 Year Graduation Rate	60.4%	60.7%	60.4%	61.5%	63.1%	64.3%	63.3%	65.3%					

Cohort: first-time college, full-time degree seeking undergraduates admitted for fall term or preceding summer term.

First-time: never matriculated as degree-seeking students at another college or university.

Full-time: enrolled in 12 or more credit hours in first fall term.

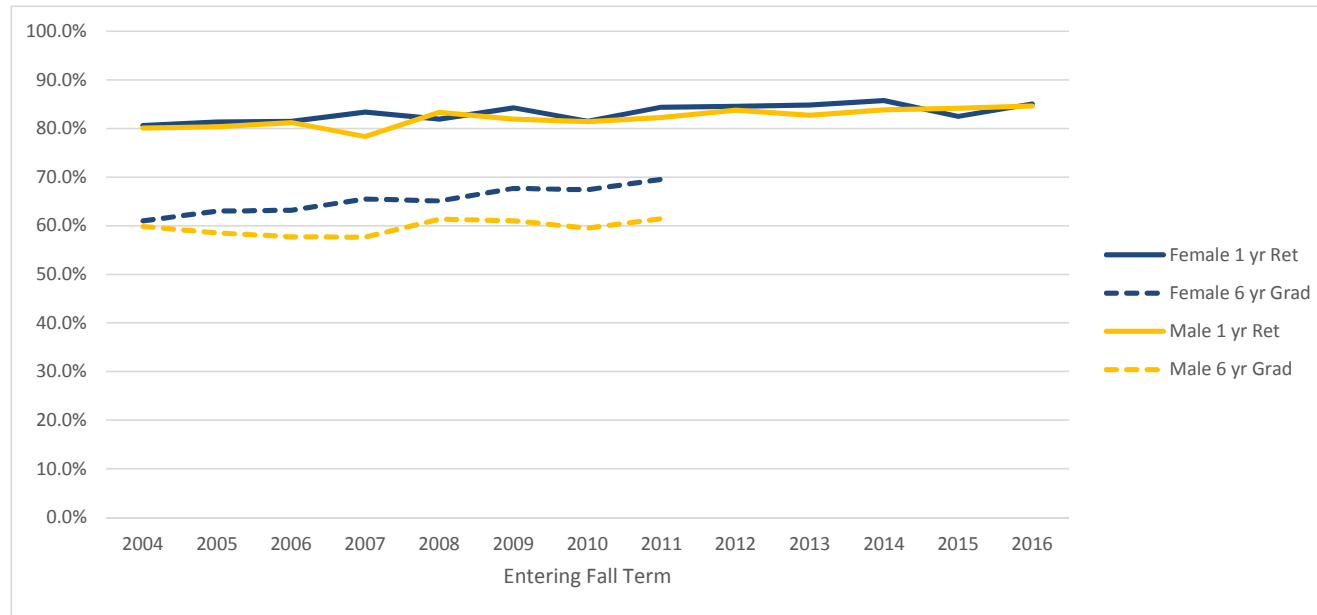
Retained: enrolled in a subsequent fall term but not yet graduated.

Graduated: received first bachelor's degree by the summer before the given following fall term.

Example, 6 year graduation counts degrees earned up to the summer before the seventh fall term.

## Retention and Graduation Rates of First-time, Full-time Degree Seeking Freshmen

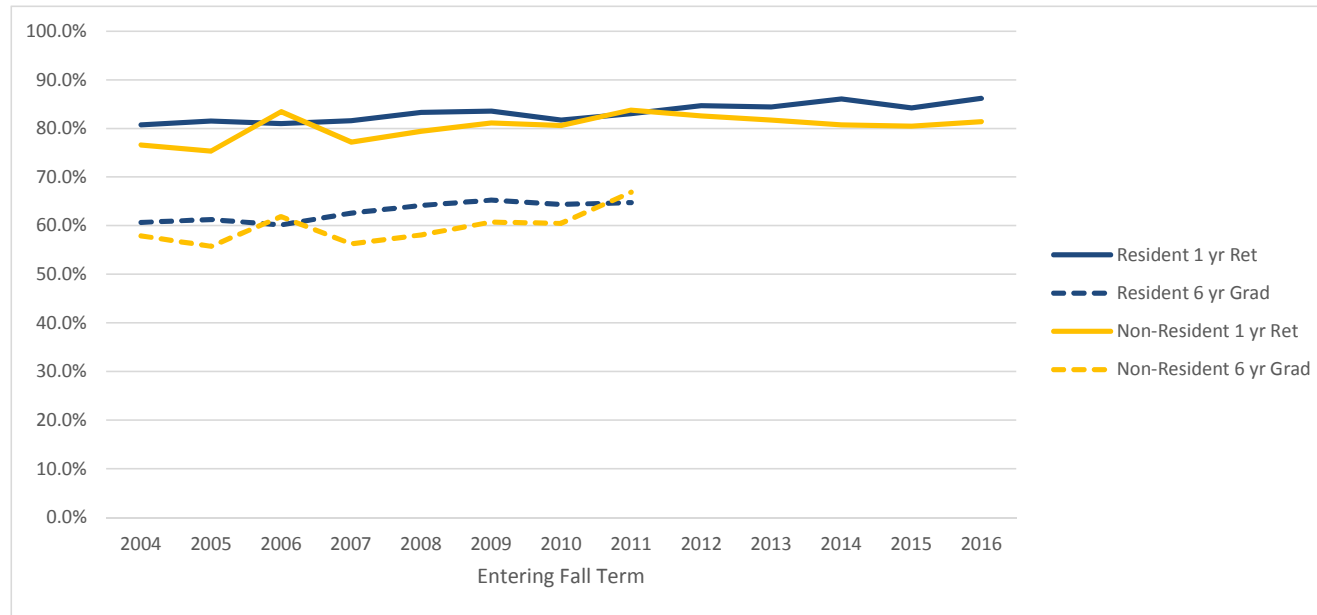
**Female/ Male**



Entering Fall Term	2004	2005	2006	2007	2008	2009	2010	2011	2012	2013	2014	2015	2016
<b>Female</b>	1408	1359	1356	1436	1421	1621	1679	1599	1582	1706	1689	1597	1735
Female 1 yr Ret	80.6%	81.4%	81.5%	83.4%	82.0%	84.3%	81.5%	84.4%	84.6%	84.9%	85.7%	82.5%	85.1%
Female 6 yr Grad	61.0%	63.0%	63.2%	65.5%	65.1%	67.7%	67.4%	69.5%					
<b>Male</b>	1486	1436	1426	1537	1582	1693	1801	1736	1742	1847	1764	1743	1788
Male 1 yr Ret	80.1%	80.4%	81.2%	78.3%	83.3%	81.9%	81.4%	82.3%	83.8%	82.7%	83.8%	84.2%	84.6%
Male 6 yr Grad	59.8%	58.5%	57.7%	57.6%	61.4%	61.0%	59.5%	61.5%					

## Retention and Graduation Rates of First-time, Full-time Degree Seeking Freshmen

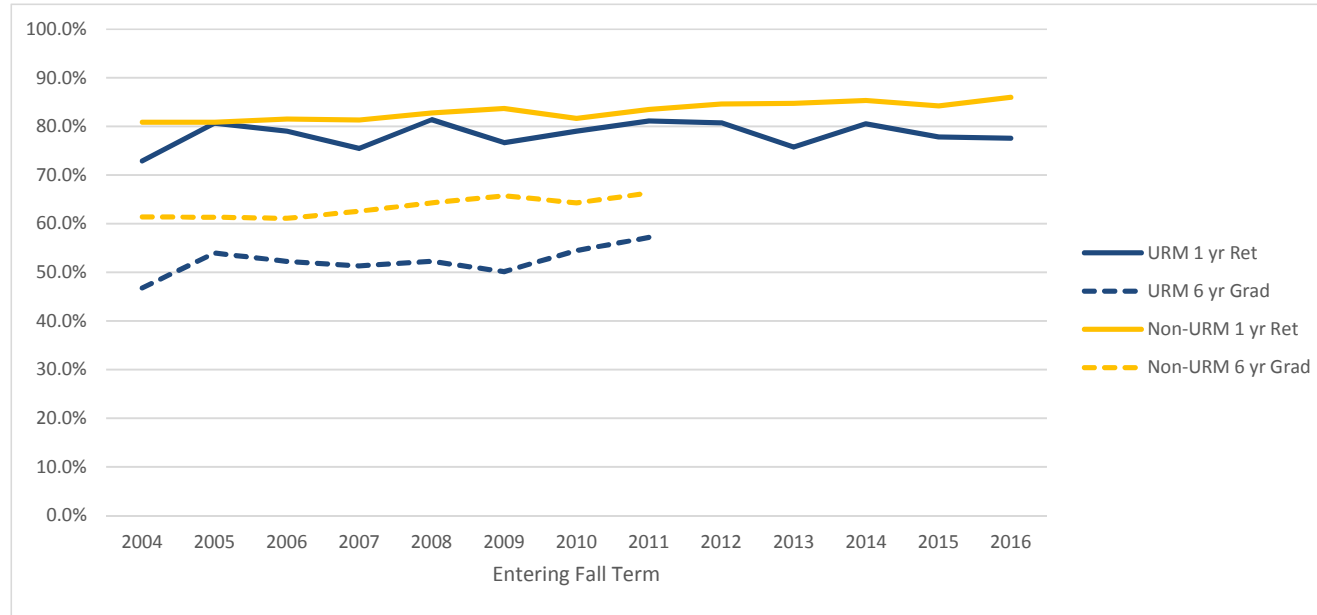
### Oregon Resident/ Non-Resident



Entering Fall Term	2004	2005	2006	2007	2008	2009	2010	2011	2012	2013	2014	2015	2016
<b>Resident</b>	2590	2483	2407	2433	2492	2588	2551	2459	2490	2633	2591	2546	2515
Resident 1 yr Ret	80.8%	81.6%	81.0%	81.6%	83.3%	83.6%	81.7%	83.1%	84.7%	84.5%	86.1%	84.2%	86.2%
Resident 6 yr Grad	60.7%	61.3%	60.2%	62.6%	64.2%	65.3%	64.4%	64.8%					
<b>Non-Resident</b>	304	312	375	540	511	726	929	876	834	920	862	794	1008
Non-Resident 1 yr Ret	76.6%	75.3%	83.5%	77.2%	79.5%	81.1%	80.6%	83.8%	82.6%	81.7%	80.7%	80.5%	81.4%
Non-Resident 6 yr Grad	57.9%	55.8%	61.9%	56.3%	58.1%	60.7%	60.5%	66.9%					

## Retention and Graduation Rates of First-time, Full-time Degree Seeking Freshmen

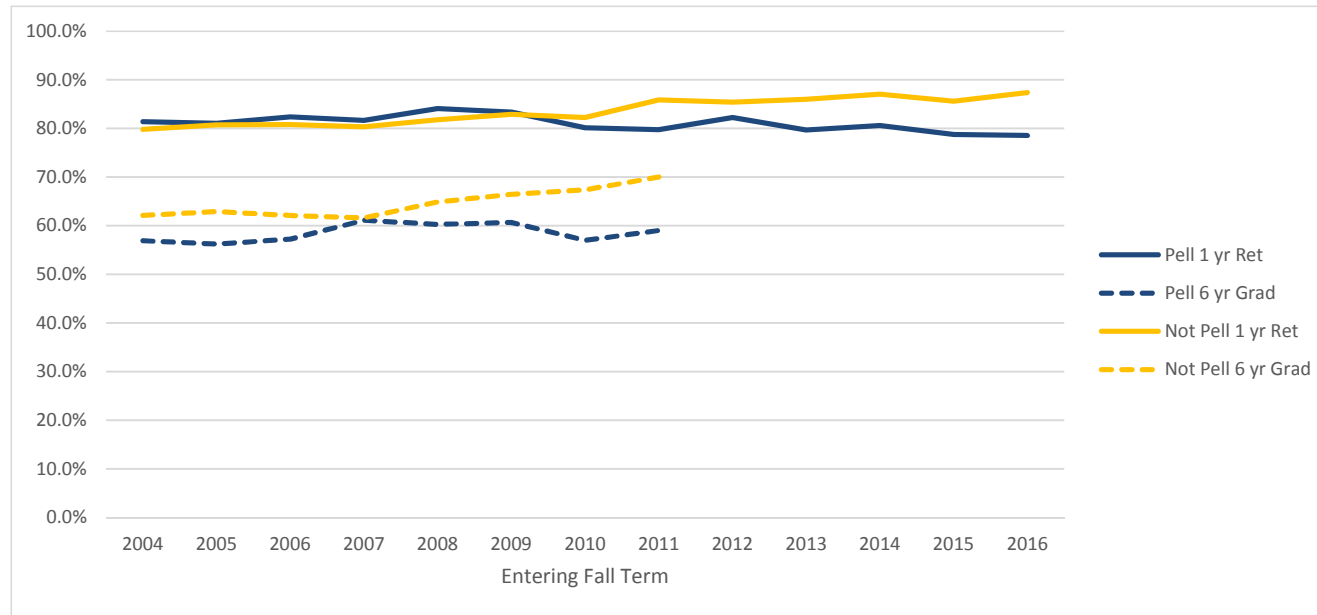
**Underrepresented Minority (African American, American Indian/Alaska Native, Hispanic, Native Hawaiian/Pacific Islander)/ Non-URM**



Entering Fall Term	2004	2005	2006	2007	2008	2009	2010	2011	2012	2013	2014	2015	2016
<b>URM</b>	203	254	224	294	285	309	334	355	369	400	437	452	477
URM 1 yr Ret	72.9%	80.7%	79.0%	75.5%	81.4%	76.7%	79.0%	81.1%	80.8%	75.8%	80.5%	77.9%	77.6%
URM 6 yr Grad	46.8%	53.9%	52.2%	51.4%	52.3%	50.2%	54.5%	57.2%					
<b>Non-URM</b>	2691	2541	2558	2679	2718	3005	3146	2980	2955	3153	3016	2888	3046
Non-URM 1 yr Ret	80.9%	80.9%	81.5%	81.4%	82.8%	83.7%	81.7%	83.5%	84.6%	84.8%	85.4%	84.2%	86.0%
Non-URM 6 yr Grad	61.4%	61.4%	61.1%	62.6%	64.3%	65.7%	64.3%	66.3%					

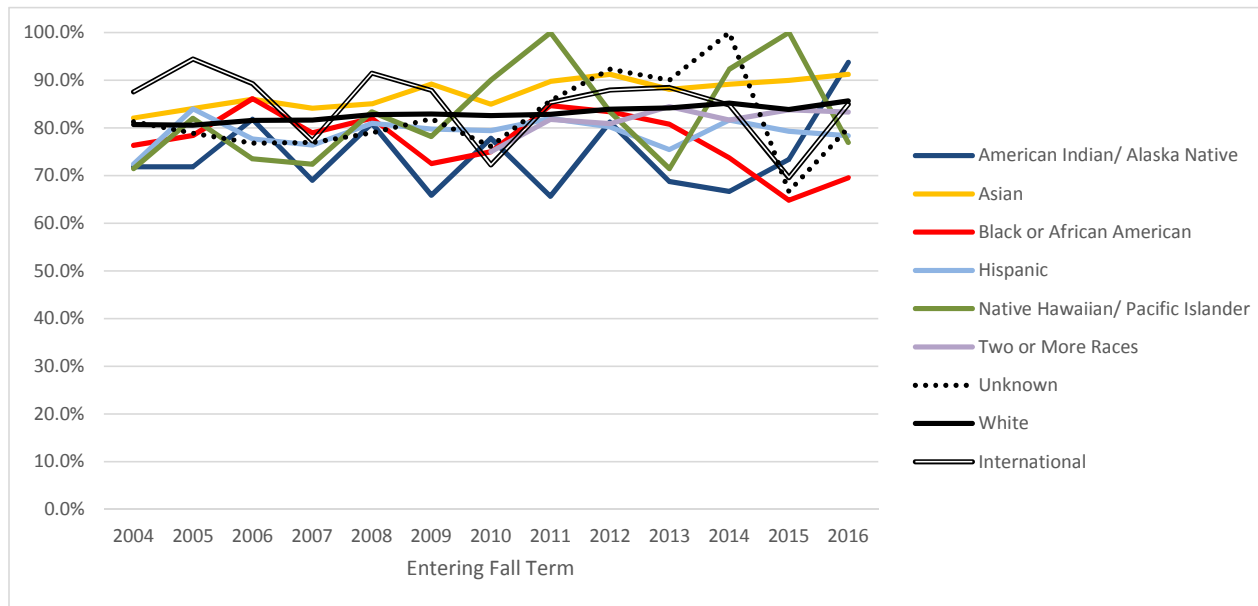
## Retention and Graduation Rates of First-time, Full-time Degree Seeking Freshmen

### Pell/ Not-Pell



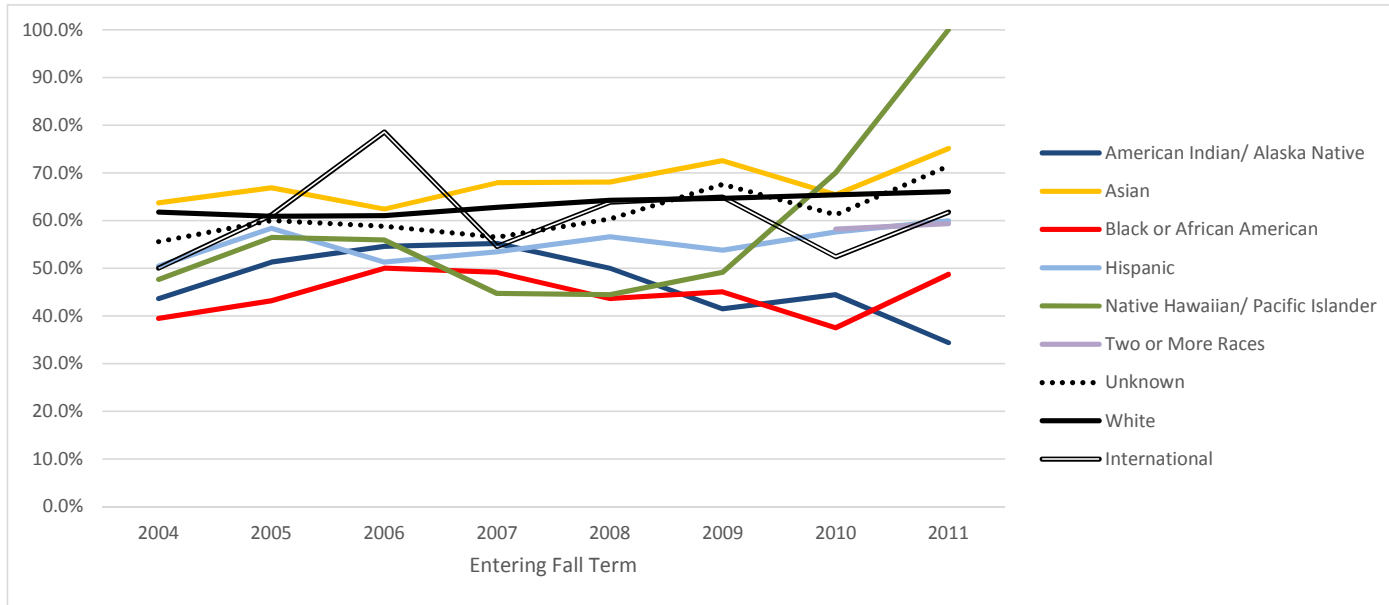
Entering Fall Term	2004	2005	2006	2007	2008	2009	2010	2011	2012	2013	2014	2015	2016
<b>Pell</b>	964	923	975	1047	1127	1256	1348	1423	1278	1254	1229	1091	1016
Pell 1 yr Ret	81.4%	81.0%	82.4%	81.7%	84.1%	83.4%	80.1%	79.8%	82.2%	79.7%	80.6%	78.7%	78.5%
Pell 6 yr Grad	57.0%	56.2%	57.2%	61.1%	60.2%	60.7%	57.0%	59.0%					
<b>Not Pell</b>	1930	1872	1807	1926	1876	2058	2132	1912	2046	2299	2224	2249	2507
Not Pell 1 yr Ret	79.8%	80.8%	80.8%	80.3%	81.8%	82.9%	82.3%	85.9%	85.4%	86.0%	87.1%	85.6%	87.4%
Not Pell 6 yr Grad	62.1%	62.9%	62.1%	61.6%	64.9%	66.5%	67.4%	70.0%					

### Ethnic Group 1 Year Retention Rates



Entering Fall Term	2004	2005	2006	2007	2008	2009	2010	2011	2012	2013	2014	2015	2016
American Indian/ Alaska Native	39	39	33	29	42	41	27	32	16	16	21	15	16
Asian	223	232	250	290	288	353	266	293	274	285	340	318	352
Black or African American	38	51	36	57	39	40	40	39	48	52	38	54	69
Hispanic	105	125	121	161	168	173	257	277	293	318	365	371	392
Native Hawaiian/ Pacific Islander	21	39	34	47	36	55	10	7	12	14	13	12	13
Two or More Races							220	236	267	309	283	296	287
Unknown	171	180	267	269	252	188	67	21	52	30	20	15	20
White	2281	2111	2013	2076	2131	2390	2467	2328	2271	2416	2314	2213	2314
International	16	18	28	44	47	74	126	102	91	113	59	46	60

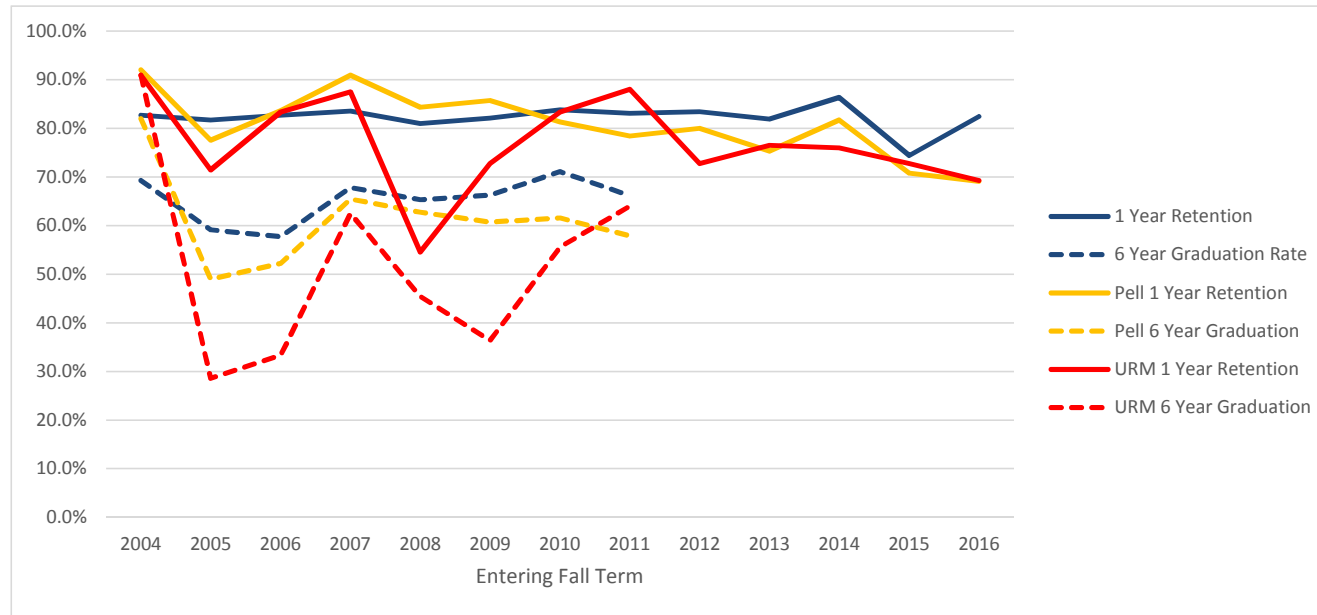
### Ethnic Group 6 Year Graduation Rates



Entering Fall Term	2004	2005	2006	2007	2008	2009	2010	2011	2012	2013	2014	2015	2016
American Indian/ Alaska Native	39 43.6%	39 51.3%	33 54.5%	29 55.2%	42 50.0%	41 41.5%	27 44.4%	32 34.4%	16	16	21	15	16
Asian	223 63.7%	232 66.8%	250 62.4%	290 67.9%	288 68.1%	353 72.5%	266 65.4%	293 75.1%	274	285	340	318	352
Black or African American	38 39.5%	51 43.1%	36 50.0%	57 49.1%	39 43.6%	40 45.0%	40 37.5%	39 48.7%	48	52	38	54	69
Hispanic	105 50.5%	125 58.4%	121 51.2%	161 53.4%	168 56.5%	173 53.8%	257 57.6%	277 59.9%	293	318	365	371	392
Native Hawaiian/ Pacific Islander	21 47.6%	39 56.4%	34 55.9%	47 44.7%	36 44.4%	55 49.1%	10 70.0%	7 100.0%	12	14	13	12	13
Two or More Races							220 58.2%	236 59.3%	267	309	283	296	287
Unknown	171 55.6%	180 60.0%	267 58.8%	269 56.5%	252 60.3%	188 67.6%	67 61.2%	21 71.4%	52	30	20	15	20
White	2281 61.7%	2111 60.9%	2013 61.0%	2076 62.8%	2131 64.2%	2390 64.6%	2467 65.4%	2328 66.1%	2271	2416	2314	2213	2314
International	16 50.0%	18 61.1%	28 78.6%	44 54.5%	47 63.8%	74 64.9%	126 52.4%	102 61.8%	91	113	59	46	60

## Retention and Graduation Rates by College of Entering Primary Major

### Agricultural Sciences



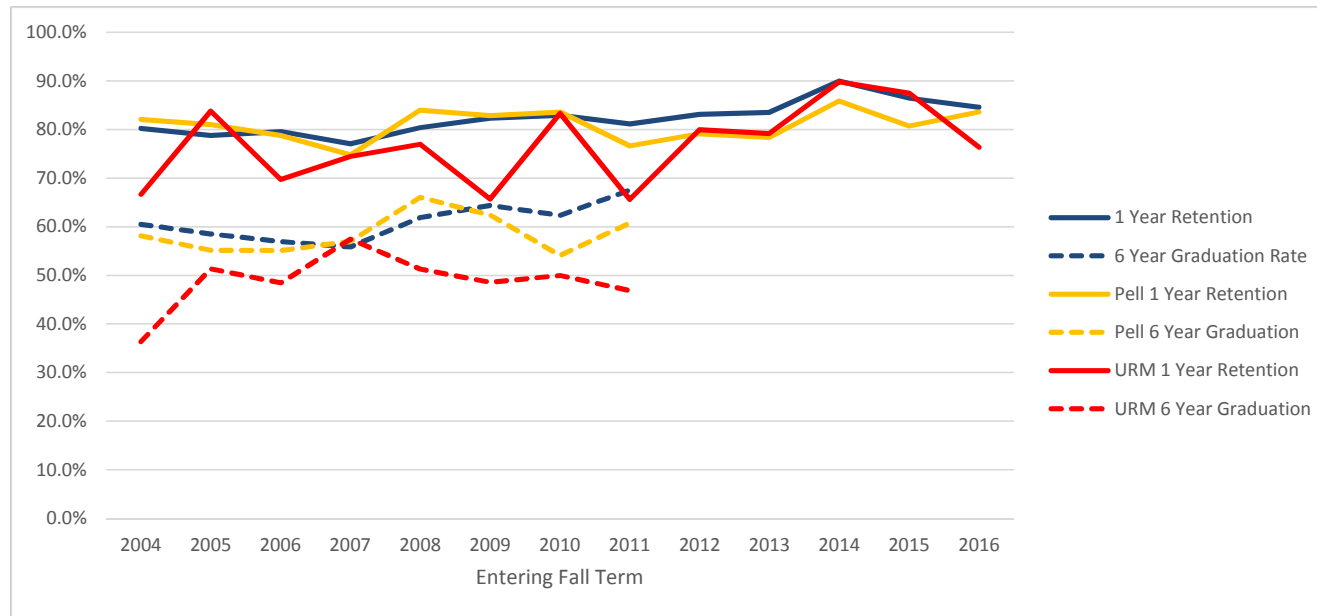
Entering Fall Term	2004	2005	2006	2007	2008	2009	2010	2011	2012	2013	2014	2015	2016
Cohort	156	142	156	146	147	151	204	213	175	188	161	164	182
1 Year Retention	82.7%	81.7%	82.7%	83.6%	81.0%	82.1%	83.8%	83.1%	83.4%	81.9%	86.3%	74.4%	82.4%
6 Year Graduation Rate	69.2%	59.2%	57.7%	67.8%	65.3%	66.2%	71.1%	66.2%					
Pell	50	49	67	55	51	56	91	102	70	77	71	65	55
Pell 1 Year Retention	92.0%	77.6%	83.6%	90.9%	84.3%	85.7%	81.3%	78.4%	80.0%	75.3%	81.7%	70.8%	69.1%
Pell 6 Year Graduation	82.0%	49.0%	52.2%	65.5%	62.7%	60.7%	61.5%	57.8%					
URM	11	7	6	8	11	11	18	25	11	17	25	22	26
URM 1 Year Retention	90.9%	71.4%	83.3%	87.5%	54.5%	72.7%	83.3%	88.0%	72.7%	76.5%	76.0%	72.7%	69.2%
URM 6 Year Graduation	90.9%	28.6%	33.3%	62.5%	45.5%	36.4%	55.6%	64.0%					

- Retention and Graduation are to ANY major - not necessarily the primary major at entry.
- Pell is based on having a Pell grant at any point as an undergraduate, not just in term of entry.
- URM is standard federal Underrepresented Minority definition: American Indian/Alaska Native, Black or African American, Hispanic, Native Hawaiian/Pacific Islander



## Retention and Graduation Rates by College of Entering Primary Major

### Business

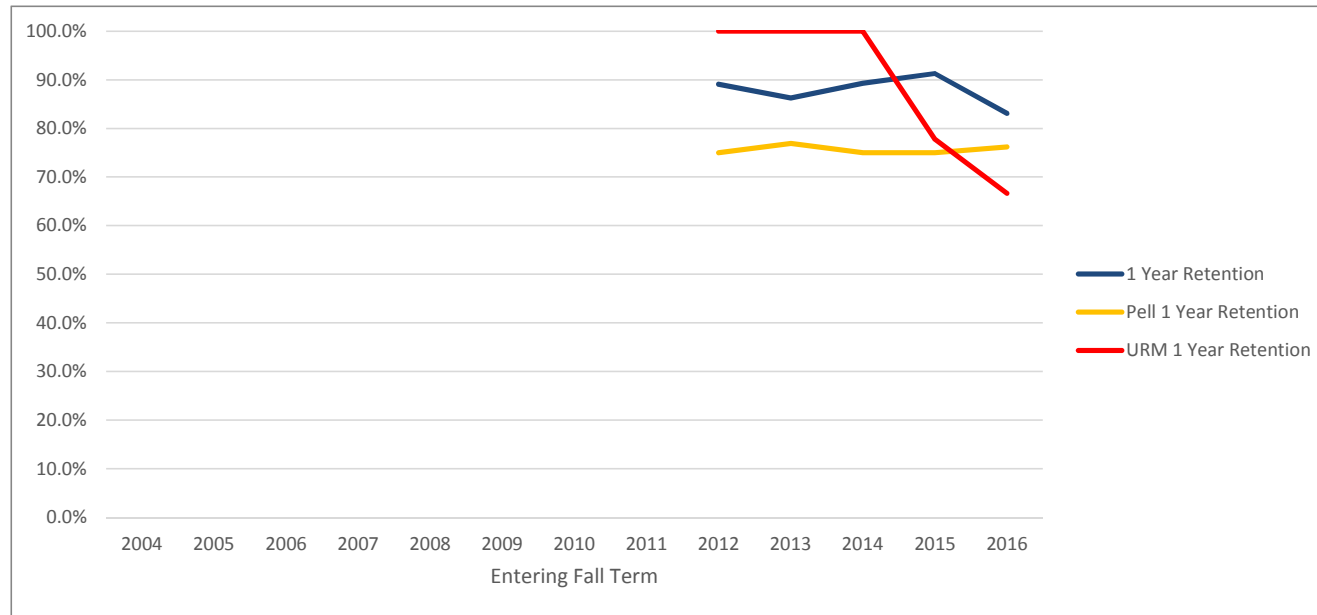


Entering Fall Term	2004	2005	2006	2007	2008	2009	2010	2011	2012	2013	2014	2015	2016
Cohort	425	429	402	410	357	379	364	308	374	401	408	427	480
1 Year Retention	80.2%	78.8%	79.6%	77.1%	80.4%	82.3%	83.0%	81.2%	83.2%	83.5%	90.0%	86.4%	84.6%
6 Year Graduation Rate	60.5%	58.5%	57.0%	55.9%	61.9%	64.4%	62.4%	67.5%					
Pell	117	116	118	107	106	117	122	107	115	111	106	109	122
Pell 1 Year Retention	82.1%	81.0%	78.8%	74.8%	84.0%	82.9%	83.6%	76.6%	79.1%	78.4%	85.8%	80.7%	83.6%
Pell 6 Year Graduation	58.1%	55.2%	55.1%	57.0%	66.0%	62.4%	54.1%	60.7%					
URM	33	37	33	47	39	35	30	32	45	48	49	48	55
URM 1 Year Retention	66.7%	83.8%	69.7%	74.5%	76.9%	65.7%	83.3%	65.6%	80.0%	79.2%	89.8%	87.5%	76.4%
URM 6 Year Graduation	36.4%	51.4%	48.5%	57.4%	51.3%	48.6%	50.0%	46.9%					

- Retention and Graduation are to ANY major - not necessarily the primary major at entry.
- Pell is based on having a Pell grant at any point as an undergraduate, not just in term of entry.
- URM is standard federal Underrepresented Minority definition: American Indian/Alaska Native, Black or African American, Hispanic, Native Hawaiian/Pacific Islander

## Retention and Graduation Rates by College of Entering Primary Major

### Earth, Ocean, and Atmospheric Sciences

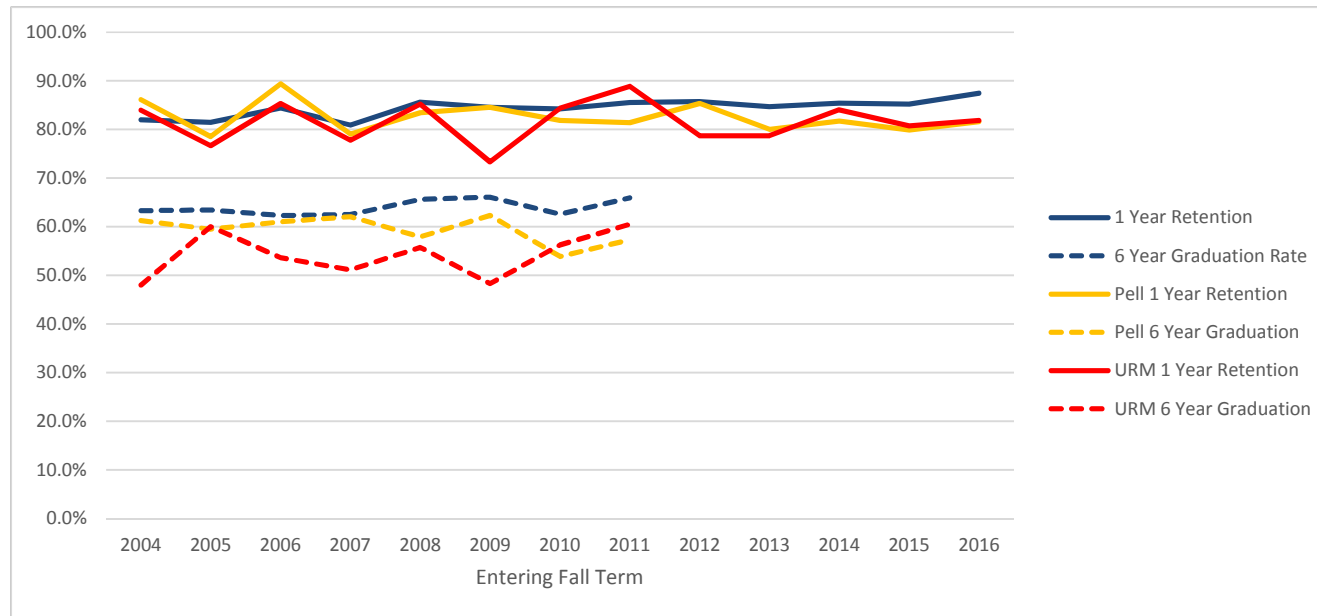


Entering Fall Term	2004	2005	2006	2007	2008	2009	2010	2011	2012	2013	2014	2015	2016
Cohort									46	51	28	46	71
1 Year Retention									89.1%	86.3%	89.3%	91.3%	83.1%
6 Year Graduation Rate													
Pell									16	13	8	12	21
Pell 1 Year Retention									75.0%	76.9%	75.0%	75.0%	76.2%
Pell 6 Year Graduation													
URM									3	1	2	9	9
URM 1 Year Retention									100.0%	100.0%	100.0%	77.8%	66.7%
URM 6 Year Graduation													

- Retention and Graduation are to ANY major - not necessarily the primary major at entry.
- Pell is based on having a Pell grant at any point as an undergraduate, not just in term of entry.
- URM is standard federal Underrepresented Minority definition: American Indian/Alaska Native, Black or African American, Hispanic, Native Hawaiian/Pacific Islander

## Retention and Graduation Rates by College of Entering Primary Major

### Engineering

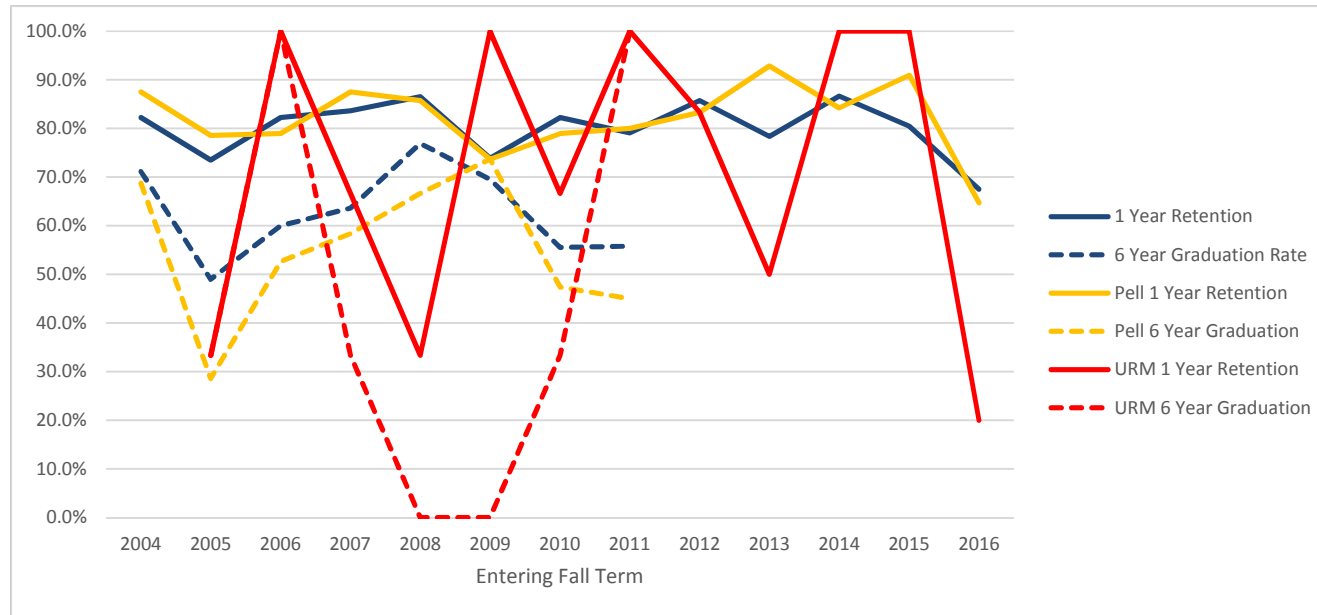


Entering Fall Term	2004	2005	2006	2007	2008	2009	2010	2011	2012	2013	2014	2015	2016
Cohort	616	626	650	702	808	843	938	927	1052	1174	1125	1111	1125
1 Year Retention	82.0%	81.5%	84.5%	80.9%	85.6%	84.6%	84.2%	85.5%	85.7%	84.7%	85.4%	85.2%	87.5%
6 Year Graduation Rate	63.3%	63.4%	62.3%	62.5%	65.6%	66.1%	62.6%	65.9%					
Pell	209	205	236	253	278	337	336	361	362	366	361	338	294
Pell 1 Year Retention	86.1%	78.5%	89.4%	79.1%	83.5%	84.6%	81.8%	81.4%	85.4%	80.1%	81.7%	79.9%	81.6%
Pell 6 Year Graduation	61.2%	59.5%	61.0%	62.1%	57.9%	62.3%	53.9%	57.3%					
URM	25	30	41	45	61	60	64	81	94	108	113	135	116
URM 1 Year Retention	84.0%	76.7%	85.4%	77.8%	85.2%	73.3%	84.4%	88.9%	78.7%	78.7%	84.1%	80.7%	81.9%
URM 6 Year Graduation	48.0%	60.0%	53.7%	51.1%	55.7%	48.3%	56.3%	60.5%					

- Retention and Graduation are to ANY major - not necessarily the primary major at entry.
- Pell is based on having a Pell grant at any point as an undergraduate, not just in term of entry.
- URM is standard federal Underrepresented Minority definition: American Indian/Alaska Native, Black or African American, Hispanic, Native Hawaiian/Pacific Islander

## Retention and Graduation Rates by College of Entering Primary Major

### Forestry

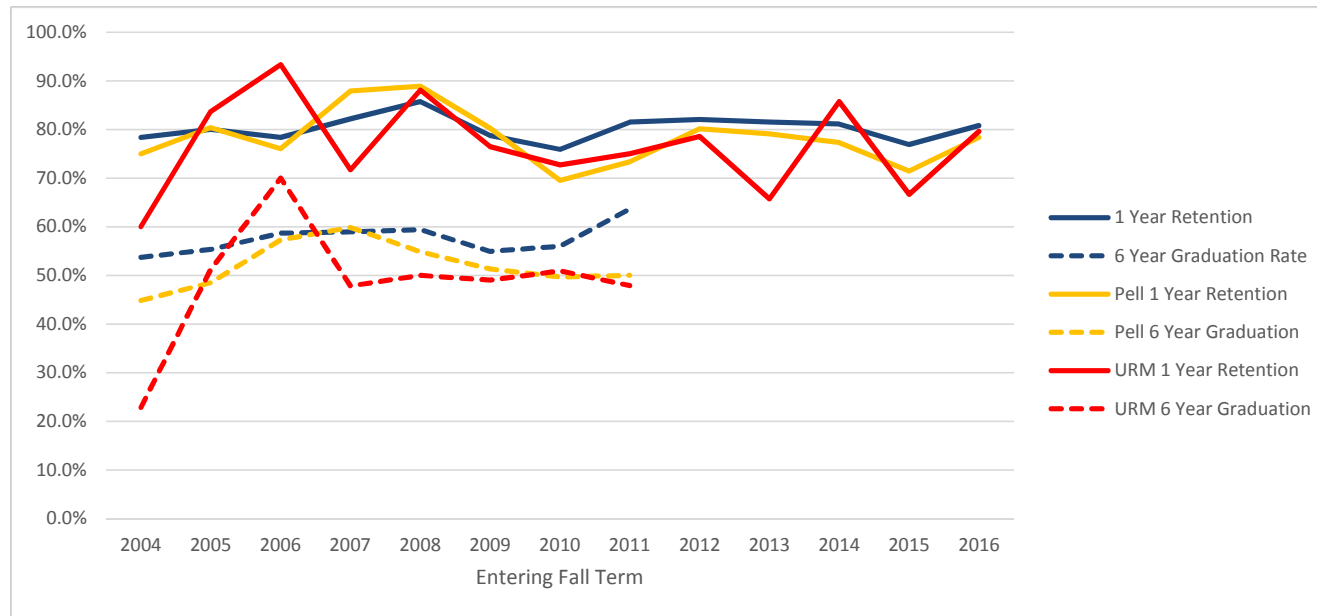


Entering Fall Term	2004	2005	2006	2007	2008	2009	2010	2011	2012	2013	2014	2015	2016
Cohort	45	49	45	55	52	46	45	43	49	37	45	41	40
1 Year Retention	82.2%	73.5%	82.2%	83.6%	86.5%	73.9%	82.2%	79.1%	85.7%	78.4%	86.7%	80.5%	67.5%
6 Year Graduation Rate	71.1%	49.0%	60.0%	63.6%	76.9%	69.6%	55.6%	55.8%					
Pell	16	14	19	24	21	19	19	20	24	14	19	11	17
Pell 1 Year Retention	87.5%	78.6%	78.9%	87.5%	85.7%	73.7%	78.9%	80.0%	83.3%	92.9%	84.2%	90.9%	64.7%
Pell 6 Year Graduation	68.8%	28.6%	52.6%	58.3%	66.7%	73.7%	47.4%	45.0%					
URM	0	3	2	3	3	1	3	1	6	2	1	6	5
URM 1 Year Retention		33.3%	100.0%	66.7%	33.3%	100.0%	66.7%	100.0%	83.3%	50.0%	100.0%	100.0%	20.0%
URM 6 Year Graduation		33.3%	100.0%	33.3%	0.0%	0.0%	33.3%	100.0%					

- Retention and Graduation are to ANY major - not necessarily the primary major at entry.
- Pell is based on having a Pell grant at any point as an undergraduate, not just in term of entry.
- URM is standard federal Underrepresented Minority definition: American Indian/Alaska Native, Black or African American, Hispanic, Native Hawaiian/Pacific Islander

## Retention and Graduation Rates by College of Entering Primary Major

### Liberal Arts

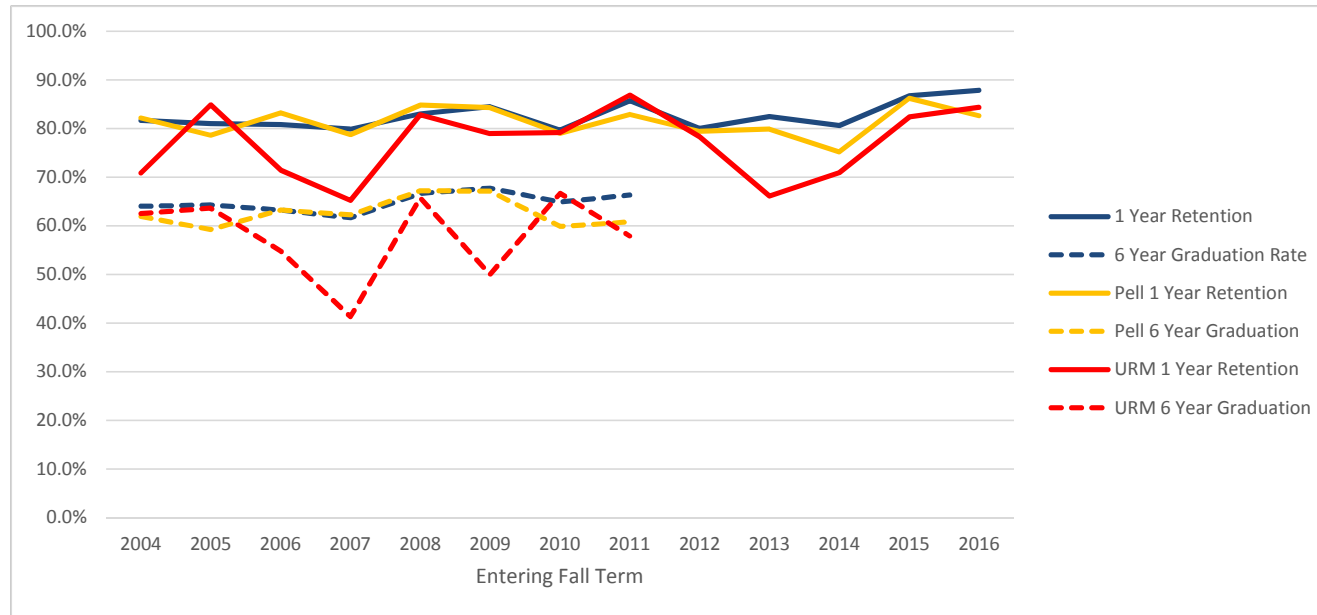


Entering Fall Term	2004	2005	2006	2007	2008	2009	2010	2011	2012	2013	2014	2015	2016
Cohort	337	300	305	353	330	395	386	341	279	336	297	286	364
1 Year Retention	78.3%	80.0%	78.4%	82.2%	85.8%	78.7%	75.9%	81.5%	82.1%	81.5%	81.1%	76.9%	80.8%
6 Year Graduation Rate	53.7%	55.3%	58.7%	58.9%	59.4%	54.9%	56.0%	63.6%					
Pell	116	97	96	132	144	152	151	154	141	129	119	98	111
Pell 1 Year Retention	75.0%	80.4%	76.0%	87.9%	88.9%	80.3%	69.5%	73.4%	80.1%	79.1%	77.3%	71.4%	78.4%
Pell 6 Year Graduation	44.8%	48.5%	57.3%	59.8%	54.9%	51.3%	49.7%	50.0%					
URM	35	43	30	46	42	51	55	48	42	35	49	51	54
URM 1 Year Retention	60.0%	83.7%	93.3%	71.7%	88.1%	76.5%	72.7%	75.0%	78.6%	65.7%	85.7%	66.7%	79.6%
URM 6 Year Graduation	22.9%	51.2%	70.0%	47.8%	50.0%	49.0%	50.9%	47.9%					

- Retention and Graduation are to ANY major - not necessarily the primary major at entry.
- Pell is based on having a Pell grant at any point as an undergraduate, not just in term of entry.
- URM is standard federal Underrepresented Minority definition: American Indian/Alaska Native, Black or African American, Hispanic, Native Hawaiian/Pacific Islander

## Retention and Graduation Rates by College of Entering Primary Major

### Public Health and Human Sciences

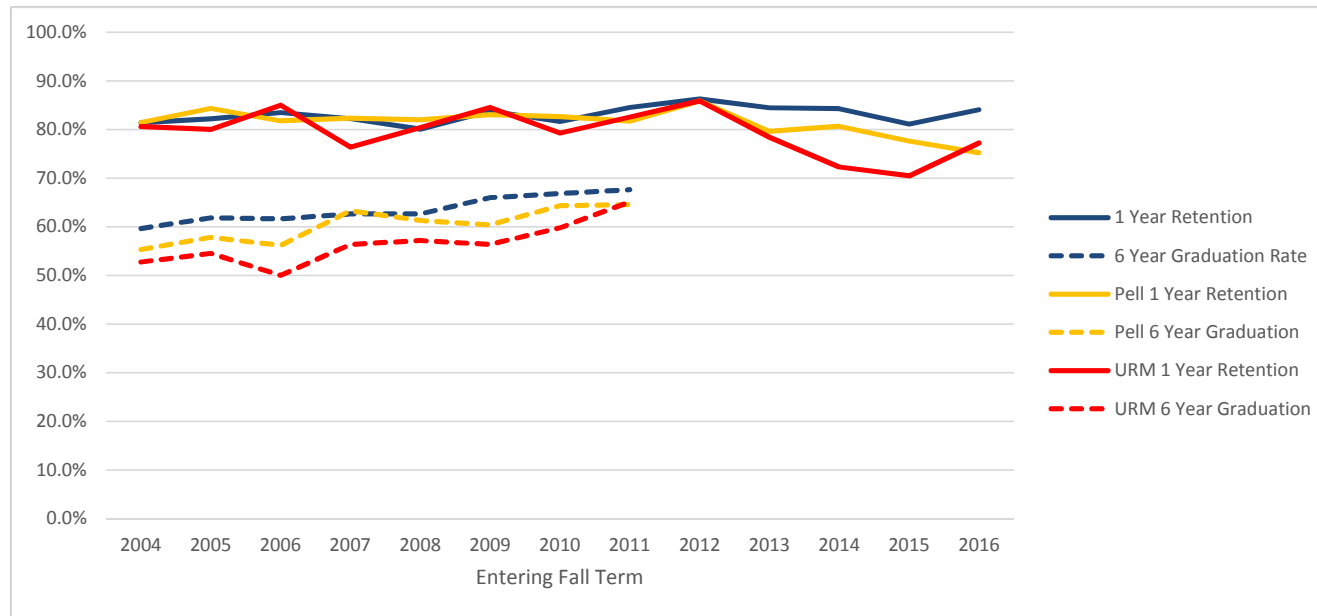


Entering Fall Term	2004	2005	2006	2007	2008	2009	2010	2011	2012	2013	2014	2015	2016
Cohort	289	358	364	378	318	406	418	407	355	364	330	286	297
1 Year Retention	81.7%	81.0%	80.8%	79.9%	83.0%	84.5%	79.7%	85.7%	80.0%	82.4%	80.6%	86.7%	87.9%
6 Year Graduation Rate	64.0%	64.2%	63.2%	61.6%	66.7%	67.7%	64.8%	66.3%					
Pell	84	103	125	127	125	146	157	181	141	134	133	116	92
Pell 1 Year Retention	82.1%	78.6%	83.2%	78.7%	84.8%	84.2%	79.0%	82.9%	79.4%	79.9%	75.2%	86.2%	82.6%
Pell 6 Year Graduation	61.9%	59.2%	63.2%	62.2%	67.2%	67.1%	59.9%	60.8%					
URM	24	33	42	46	35	38	48	38	46	59	55	51	51
URM 1 Year Retention	70.8%	84.8%	71.4%	65.2%	82.9%	78.9%	79.2%	86.8%	78.3%	66.1%	70.9%	82.4%	84.3%
URM 6 Year Graduation	62.5%	63.6%	54.8%	41.3%	65.7%	50.0%	66.7%	57.9%					

- Retention and Graduation are to ANY major - not necessarily the primary major at entry.
- Pell is based on having a Pell grant at any point as an undergraduate, not just in term of entry.
- URM is standard federal Underrepresented Minority definition: American Indian/Alaska Native, Black or African American, Hispanic, Native Hawaiian/Pacific Islander

## Retention and Graduation Rates by College of Entering Primary Major

### Science

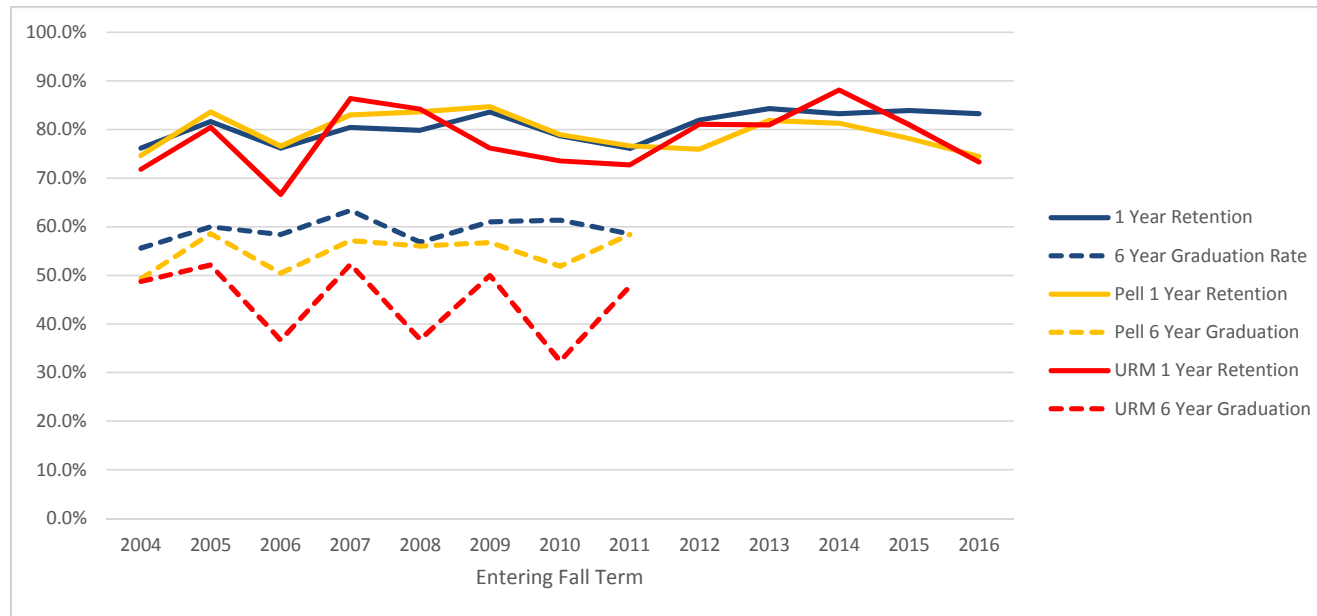


Entering Fall Term	2004	2005	2006	2007	2008	2009	2010	2011	2012	2013	2014	2015	2016
Cohort	607	516	545	607	653	753	778	732	662	677	712	661	677
1 Year Retention	81.4%	82.2%	83.5%	82.2%	80.1%	83.8%	81.6%	84.6%	86.3%	84.5%	84.3%	81.1%	84.0%
6 Year Graduation Rate	59.6%	61.8%	61.7%	62.6%	62.6%	66.0%	66.8%	67.6%					
Pell	226	211	203	237	261	318	339	361	276	294	305	255	214
Pell 1 Year Retention	81.4%	84.4%	81.8%	82.3%	82.0%	83.0%	82.6%	81.7%	85.9%	79.6%	80.7%	77.6%	75.2%
Pell 6 Year Graduation	55.3%	57.8%	56.2%	63.3%	61.3%	60.4%	64.3%	64.5%					
URM	36	55	40	55	56	71	82	86	85	88	101	88	101
URM 1 Year Retention	80.6%	80.0%	85.0%	76.4%	80.4%	84.5%	79.3%	82.6%	85.9%	78.4%	72.3%	70.5%	77.2%
URM 6 Year Graduation	52.8%	54.5%	50.0%	56.4%	57.1%	56.3%	59.8%	65.1%					

- Retention and Graduation are to ANY major - not necessarily the primary major at entry.
- Pell is based on having a Pell grant at any point as an undergraduate, not just in term of entry.
- URM is standard federal Underrepresented Minority definition: American Indian/Alaska Native, Black or African American, Hispanic, Native Hawaiian/Pacific Islander

## Retention and Graduation Rates by College of Entering Primary Major

### University Exploratory Studies



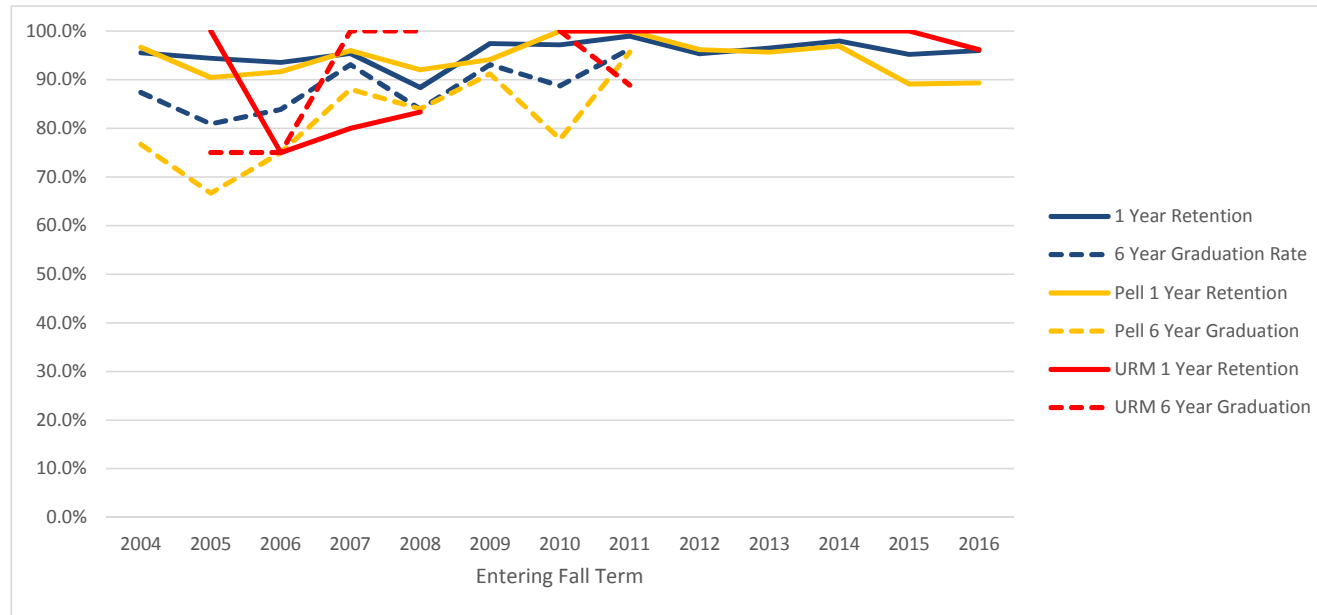
Entering Fall Term	2004	2005	2006	2007	2008	2009	2010	2011	2012	2013	2014	2015	2016
Cohort	419	375	315	322	338	341	347	364	332	325	347	318	287
1 Year Retention	76.1%	81.6%	76.2%	80.4%	79.9%	83.6%	78.7%	76.1%	81.9%	84.3%	83.3%	84.0%	83.3%
6 Year Graduation Rate	55.6%	60.0%	58.4%	63.4%	56.8%	61.0%	61.4%	58.5%					
Pell	146	128	111	112	141	111	133	137	133	116	107	87	90
Pell 1 Year Retention	74.7%	83.6%	76.6%	83.0%	83.7%	84.7%	78.9%	76.6%	75.9%	81.9%	81.3%	78.2%	74.4%
Pell 6 Year Graduation	49.3%	58.6%	50.5%	57.1%	56.0%	56.8%	51.9%	58.4%					
URM	39	46	30	44	38	42	34	44	37	42	42	42	60
URM 1 Year Retention	71.8%	80.4%	66.7%	86.4%	84.2%	76.2%	73.5%	72.7%	81.1%	81.0%	88.1%	81.0%	73.3%
URM 6 Year Graduation	48.7%	52.2%	36.7%	52.3%	36.8%	50.0%	32.4%	47.7%					

- Retention and Graduation are to ANY major - not necessarily the primary major at entry.
- Pell is based on having a Pell grant at any point as an undergraduate, not just in term of entry.
- URM is standard federal Underrepresented Minority definition: American Indian/Alaska Native, Black or African American, Hispanic, Native Hawaiian/Pacific Islander



## Retention and Graduation Rates

### University Honors College

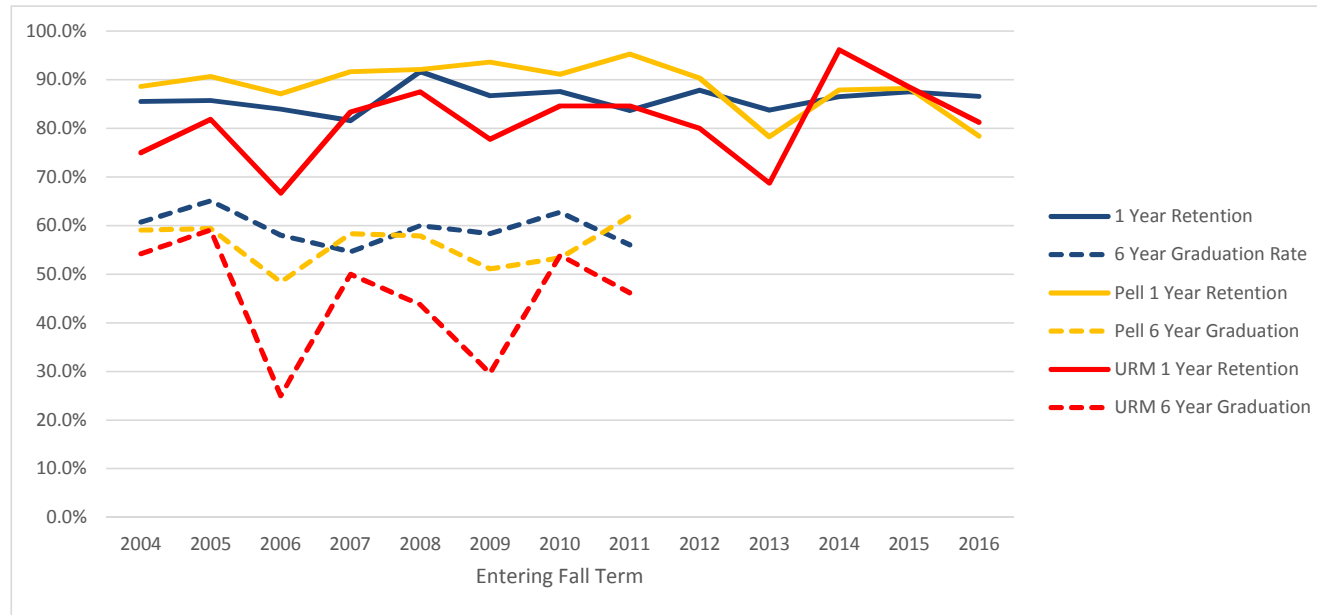


Entering Fall Term	2004	2005	2006	2007	2008	2009	2010	2011	2012	2013	2014	2015	2016
Cohort	111	89	62	87	112	116	178	190	213	201	295	251	349
1 Year Retention	95.5%	94.4%	93.5%	95.4%	88.4%	97.4%	97.2%	98.9%	95.3%	96.5%	98.0%	95.2%	96.0%
6 Year Graduation Rate	87.4%	80.9%	83.9%	93.1%	83.9%	93.1%	88.8%	96.3%					
Pell	30	21	12	25	25	34	45	46	52	46	65	46	47
Pell 1 Year Retention	96.7%	90.5%	91.7%	96.0%	92.0%	94.1%	100.0%	100.0%	96.2%	95.7%	96.9%	89.1%	89.4%
Pell 6 Year Graduation	76.7%	66.7%	75.0%	88.0%	84.0%	91.2%	77.8%	95.7%					
URM	0	4	4	5	6	0	8	9	9	12	20	15	26
URM 1 Year Retention		100.0%	75.0%	80.0%	83.3%		100.0%	100.0%	100.0%	100.0%	100.0%	100.0%	96.2%
URM 6 Year Graduation		75.0%	75.0%	100.0%	100.0%		100.0%	88.9%					

- Based on Honors College identifier in first fall term
- These students are also counted in their respective college from the first fall term

## Retention and Graduation Rates

### Student Athletes



Entering Fall Term	2004	2005	2006	2007	2008	2009	2010	2011	2012	2013	2014	2015	2016
Cohort	145	126	112	152	120	180	153	141	107	166	141	128	164
1 Year Retention	85.5%	85.7%	83.9%	81.6%	91.7%	86.7%	87.6%	83.7%	87.9%	83.7%	86.5%	87.5%	86.6%
6 Year Graduation Rate	60.7%	65.1%	58.0%	54.6%	60.0%	58.3%	62.7%	56.0%					
Pell	44	32	31	36	38	47	45	42	31	46	33	34	37
Pell 1 Year Retention	88.6%	90.6%	87.1%	91.7%	92.1%	93.6%	91.1%	95.2%	90.3%	78.3%	87.9%	88.2%	78.4%
Pell 6 Year Graduation	59.1%	59.4%	48.4%	58.3%	57.9%	51.1%	53.3%	61.9%					
URM	24	22	12	30	16	27	26	26	20	32	26	26	32
URM 1 Year Retention	75.0%	81.8%	66.7%	83.3%	87.5%	77.8%	84.6%	84.6%	80.0%	68.8%	96.2%	88.5%	81.3%
URM 6 Year Graduation	54.2%	59.1%	25.0%	50.0%	43.8%	29.6%	53.8%	46.2%					

- Based on Athlete identifier in first fall term
- These students are also counted in their respective college from the first fall term

**Oregon State University**  
**Retention and Graduation Rates of First-time, Full-time Degree Seeking Freshmen**  
**Entering Fall Cohorts: 2004 to 2016**

Year	Cohort	1 Yr Retained	2 Yr Retained	2 Yr Graduated	3 Yr Retained	3 Yr Graduated	4 Yr Retained	4 Yr Graduated	5 Yr Retained	5 Yr Graduated	6 Yr Retained	6 Yr Graduated
2004	2894	2325 80.3%	2072 71.6%	0 0.0%	1920 66.3%	53 1.8%	936 32.3%	905 31.3%	276 9.5%	1569 54.2%	127 4.4%	1748 60.4%
2005	2795	2260 80.9%	1993 71.3%	0 0.0%	1881 67.3%	35 1.3%	1000 35.8%	793 28.4%	251 9.0%	1519 54.3%	107 3.8%	1696 60.7%
2006	2782	2263 81.3%	2012 72.3%	0 0.0%	1867 67.1%	31 1.1%	984 35.4%	815 29.3%	294 10.6%	1501 54.0%	117 4.2%	1680 60.4%
2007	2973	2402 80.8%	2143 72.1%	3 0.1%	2037 68.5%	42 1.4%	1066 35.9%	878 29.5%	277 9.3%	1647 55.4%	92 3.1%	1827 61.5%
2008	3003	2483 82.7%	2214 73.7%	3 0.1%	2076 69.1%	50 1.7%	1081 36.0%	922 30.7%	331 11.0%	1685 56.1%	102 3.4%	1896 63.1%
2009	3314	2753 83.1%	2483 74.9%	4 0.1%	2319 70.0%	50 1.5%	1163 35.1%	1072 32.3%	305 9.2%	1925 58.1%	92 2.8%	2130 64.3%
2010	3480	2834 81.4%	2569 73.8%	4 0.1%	2410 69.3%	43 1.2%	1154 33.2%	1145 32.9%	312 9.0%	1995 57.3%	104 3.0%	2204 63.3%
2011	3335	2777 83.3%	2528 75.8%	2 0.1%	2341 70.2%	67 2.0%	1147 34.4%	1110 33.3%	305 9.1%	1975 59.2%	122 3.7%	2179 65.3%
2012	3324	2798 84.2%	2559 77.0%	3 0.1%	2403 72.3%	66 2.0%	1096 33.0%	1223 36.8%	317 9.5%	2029 61.0%		
2013	3553	2976 83.8%	2701 76.0%	7 0.2%	2495 70.2%	79 2.2%	1228 34.6%	1238 34.8%				
2014	3453	2927 84.8%	2703 78.3%	4 0.1%	2537 73.5%	82 2.4%						
2015	3340	2784 83.4%	2575 77.1%	1 0.0%								
2016	3523	2989 84.8%										

Cohort: first-time college, full-time degree seeking undergraduates admitted for fall term or preceding summer term.

First-time: never matriculated as degree-seeking students at another college or university.

Full-time: enrolled in 12 or more credit hours in first fall term.

Retained: enrolled in a subsequent fall term but not yet graduated.

Graduated: received first bachelor's degree by the summer before the given following fall term.

Example, 6 year graduation counts degrees earned up to the summer before the seventh fall term.