

Oregon State University
Movement in Primary College
Fall Term 2009 Cohort Class

This is a study of the cohort of first time, full time (credit hours greater than or equal to 12) degree seeking undergraduate students enrolled in the Fall Term of 2009. The study provides detailed information on enrollment, graduation, retention, attrition, and change in college (based on primary major) of the cohort class over a 1-year to 6-year time span. With this study, each college can track the migration patterns of their students and determine the graduation, retention, and attrition rates of students in their college cohort from 2009-2015.

There were 3,314 students in the Fall Term 2009 cohort class enrolled in colleges/programs at the university. Table 1 contains the student graduation, retention, and attrition numbers and percentages for 2013 (4-year), 2014 (5-year) and 2015 (6-year). The data show that in Fall Term 2015, there were 92 students from the cohort continuing their study at the university. Figures 1, 2, and 3 depict the graduation, retention, and attrition rates by year for the Fall Term 2009 cohort class. The six-year graduation rate for Fall Term 2009 cohort was 64.3%. The first year retention rate for the Fall Term 2009 cohort was 83.1% which also translates into 16.9% of the students from the 2009 cohort did not return for the 2nd year of college at OSU.

Fall 2009 Cohort	2013		2014		2015	
	Number	Percentage	Number	Percentage	Number	Percentage
Graduation	1,072	32.3%	1,925	58.1%	2,130	64.3%
Continuation	1,163	35.1%	305	9.2%	92	2.8%
Attrition	1,079	32.6%	1,084	32.7%	1,092	33.0%
Total	3,314	100.0%	3,314	100.0%	3,314	100.0%

Figure 1: Graduation Rate by Year

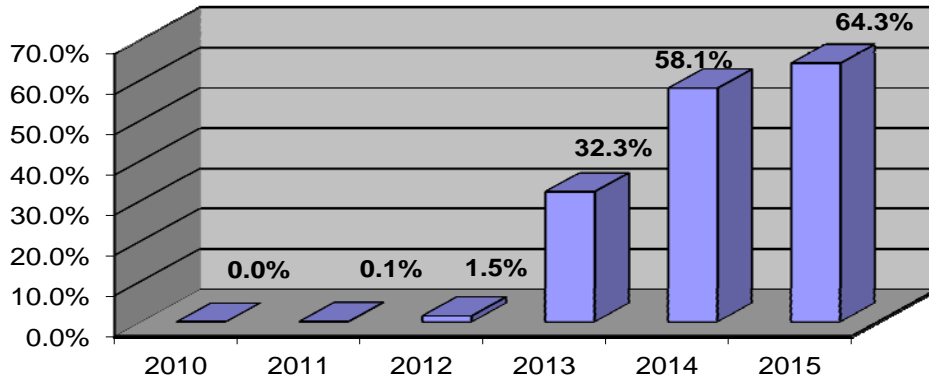


Figure 2: Retention Rate by Year

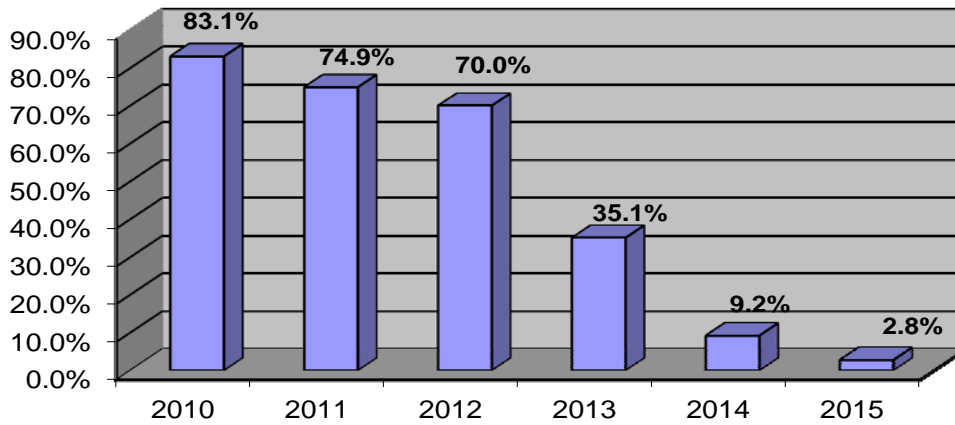
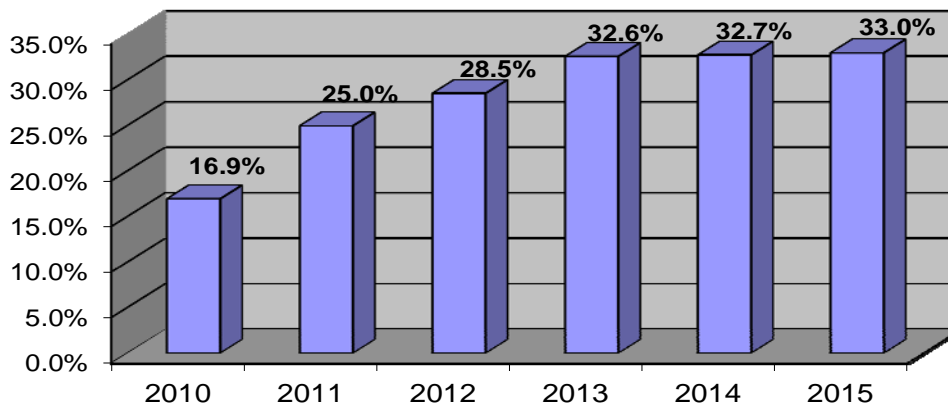


Figure 3: Attrition Rate by Year



For students who graduated from OSU, a large proportion graduated from colleges other than the one in which they had initially enrolled in Fall Term 2009. Table 2 lists the numbers of students who graduated from their original colleges and from other colleges they transferred to by year. By the end of Summer Term 2015, 64.3% of students (2,130) in the cohort class had graduated; 60.5% of the graduates (1,289) graduated from the same college in which they originally enrolled in Fall 2009 and 39.5% (841) graduated from other colleges. Students who stayed in the same college in which they originally enrolled graduated sooner than those in the cohort who changed colleges.

Fall 2009 Cohort	2013		2014		2015	
	Number	Percentage	Number	Percentage	Number	Percentage
From the same college	710	66.2%	1,206	62.6%	1,289	60.5%
From other colleges	362	33.8%	719	37.4%	841	39.5%
Total graduation	1,072	100.0%	1,925	100.0%	2,130	100.0%

In the group of continuing students, some continued in the same college and some transferred to other colleges. Table 3 contains the net gains and losses of students by college for each year. The Colleges of Engineering, Science, and the University Exploratory Studies Program consistently lost students to other colleges. The Colleges of Agricultural Sciences, Forestry, Public Health and Human Sciences, and Liberal Arts gained students from other colleges each year.

	2009	2010	2011	2012	2013	2014
Agricultural Sciences	7	29	39	31	18	5
Business	-8	37	42	22	-4	-1
Education	0	0	0	0	0	0
Engineering	-64	-127	-145	-96	-20	-11
Forestry	12	8	9	9	1	1
Public Health and Human Sciences	131	238	244	133	24	8
Liberal Arts	71	166	185	110	37	9
Pharmacy	0	1	11	1	1	0
Science	-102	-193	-210	-100	-31	-10
University Exploratory Studies Program	-47	-159	-178	-112	-28	-3
Veterinary Medicine	0	0	3	2	2	2

Details on the redistribution of continuing students are provided in Figures 4-9.

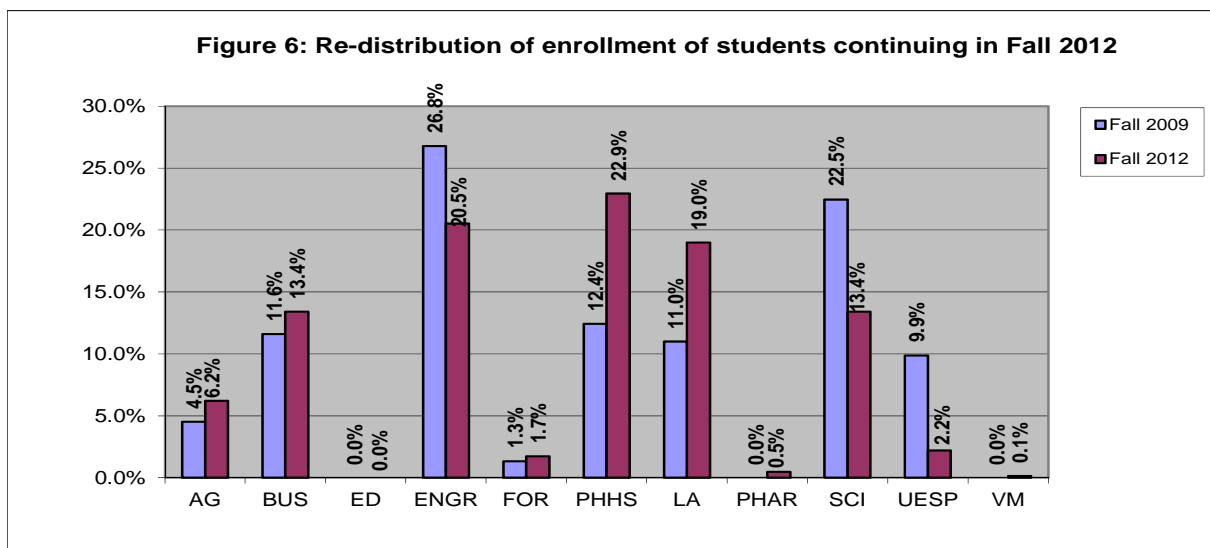
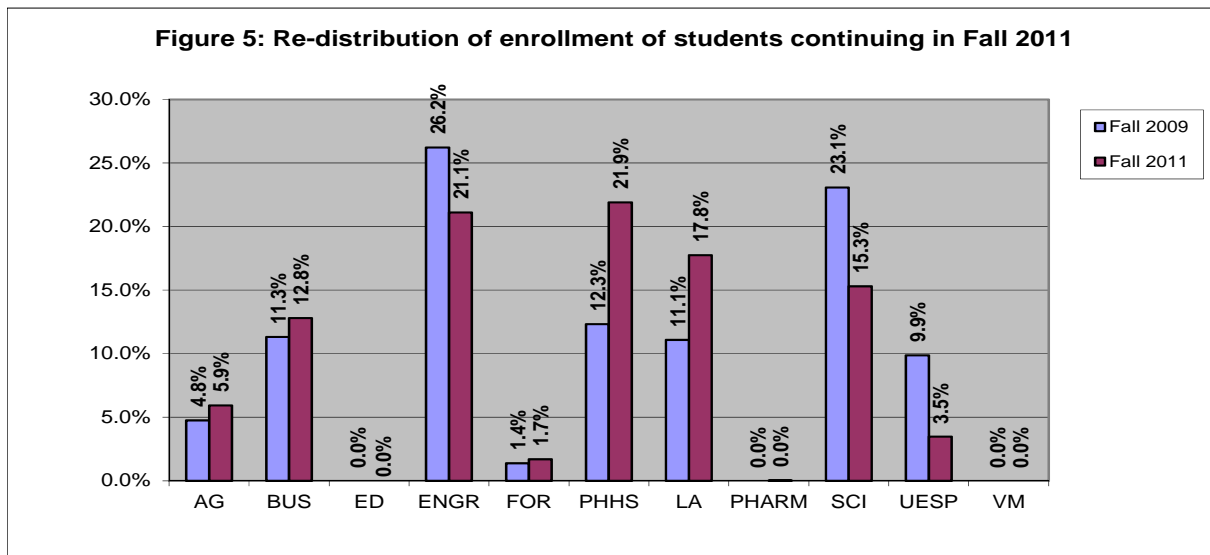
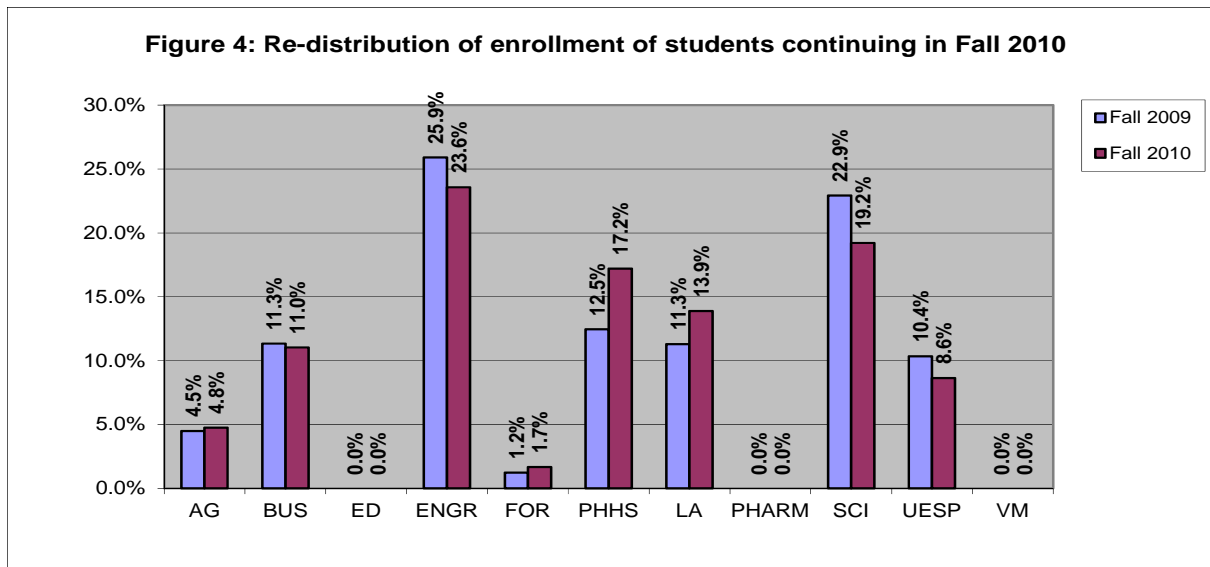


Figure 7: Re-distribution of enrollment of students continuing in Fall 2013

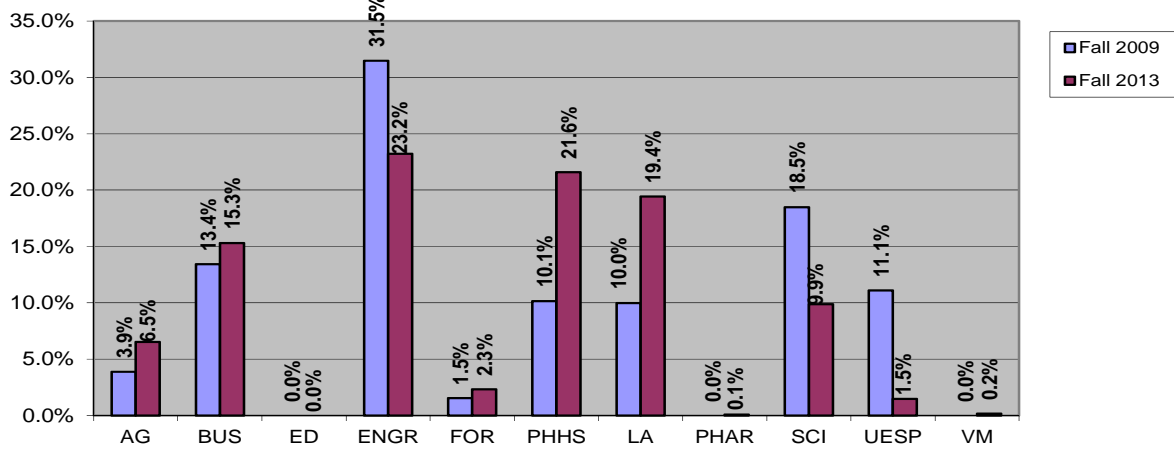


Figure 8: Re-distribution of enrollment of students continuing in Fall 2014

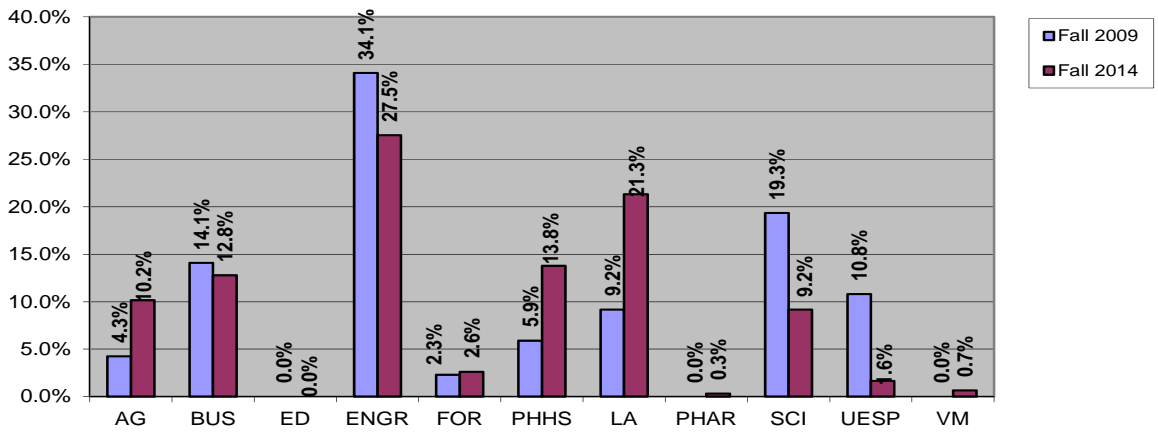
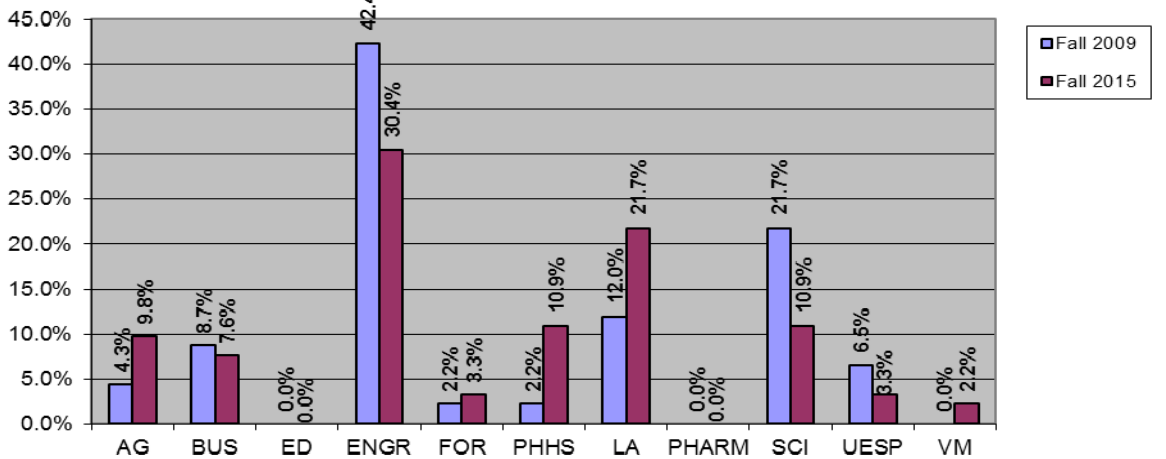


Figure 9: Re-distribution of enrollment of students continuing in Fall 2015



Tables 4-9 contain retention and graduation data for each college from Fall 2009 to Fall 2015 for the Fall 2009 cohort. The shaded columns in the top table on each page denote the college that students moved to, listed by college. For example, in Table 4, the College of Agricultural Sciences has 151 students in Fall Term 2009 cohort class. 27 Agricultural Sciences students left OSU after their first year. Of those who stayed, 108 continued in Agricultural Sciences, 1 transferred to Business, 1 transferred to Forestry, 6 to Public Health and Human Sciences, 1 to Liberal Arts, 6 transferred to Science, and 1 transferred to University Exploratory Studies Program. This results in a 17.9% attrition rate after one year for the college of Agricultural Sciences. The continuation rate - those students who remained in the College of Agricultural Sciences is 71.5% (124/151). The overall retention rate at OSU for this cohort (Agricultural Sciences) is 82.1%.

The second table on each page contains the net gain or loss by college for the freshman cohort. Again, for Agricultural Sciences, 1 student was gained from Business, 2 from Engineering, 2 from Liberal Arts, 3 from Science, and 5 from University Exploratory Studies Program. At the same time, 6 Agricultural Sciences students transferred to Public Health and Human Sciences. These changes resulted in a net gain of 7 students.

Over the course of this study, Public Health and Human Sciences and Liberal Arts consistently gained the most students from other colleges. University Exploratory Studies Program consistently transferred more students to other colleges; this is expected given the purpose of University Exploratory Studies Program. With University Exploratory Studies Program omitted, the College of Engineering and the College of Sciences had the most students transferring to other OSU colleges over the course of the study.

The graduation results for this cohort begin in Table 5, Fall 2009 -Fall 2011 but for explanatory purposes we'll reference Table 6 since there are more examples. Table 6 shows that the original freshman cohort totaled 3,314 and that a total of 50 students graduated resulting in a three year graduation rate of 1.5% (50 / 3314). Of the 50

graduates, 37 students graduated from the college where they initially enrolled and 14 students graduated after transferring to another college within OSU. Detail information reveals that of the 50 total graduates, 4 graduated from Agricultural Sciences. 3 students from this subset remained with Agricultural Sciences from the beginning and 1 student graduated after transferring to another college. Agricultural Sciences has a graduation rate of 2.6% (4 / 151).

After four years (Table 7) the total number of graduates increased to 1,072 giving a 32.3% four year graduation rate. 66 students graduated from the Agricultural Sciences cohort of 151 resulting in a 43.7% graduation rate. Eleven of the students graduating from the Agricultural Sciences initial cohort transferred to another college.

For the fifth year (Table 8), 93 students in the Agricultural Sciences cohort had graduated; however, only 77 students graduated from Agricultural Sciences. The other 16 students graduated from other OSU colleges. The five-year graduation rate for Agricultural Sciences was 61.6%. The overall five-year graduation rate for the University was 58.1%.

The sixth year (Table 9) graduation rate for Agricultural Sciences was 66.2% with a total of 80 students from the Agricultural Sciences cohort graduating in Agricultural Sciences and 20 graduating from other OSU colleges. OSU's six-year overall graduation rate was 61.5%

Almost 39.5% of the students who graduated from OSU after six years graduated from a different college than the college where they were initially enrolled. The implications of this information in terms of advising and helping students to transition from college to college seems particularly appropriate.

**Table 4: Fall 2009 First Time, Full Time, Degree Seeking Undergraduate Student Cohort
Movement Study (Fall 2009 - Fall 2010)**

COLLEGE	Cohort 2009	Grad. Rate	Grad. Rate	Attr. Rate	Attr. Rate	College Movement Pattern												Cont. Rate		Rate
						AG	BUS	ED	ENGR	FOR	PHHS	LA	PHAR	SCI	UESP	VM	Subtotal	Trans.*	College**	
Agricultural Sciences	151	0	0%	27	17.9%	108	1	0	0	1	6	1	0	6	1	0	124	10.6%	71.5%	82.1%
Business	379	0	0%	67	17.7%	2	240	0	7	3	24	23	0	5	8	0	312	19.0%	63.3%	82.3%
Education	0	0	0%	0	0.0%	0	0	0	0	0	0	0	0	0	0	0	0	0.0%	0.0%	0.0%
Engineering	843	0	0%	130	15.4%	2	15	0	613	7	19	20	0	16	21	0	713	11.9%	72.7%	84.6%
Forestry	46	0	0%	12	26.1%	1	0	0	1	30	0	0	0	2	0	0	34	8.7%	65.2%	73.9%
Public Health & Human Sciences	406	0	0%	63	15.5%	0	8	0	1	1	308	11	0	8	6	0	343	8.6%	75.9%	84.5%
Liberal Arts	395	0	0%	84	21.3%	3	11	0	3	0	24	257	0	4	9	0	311	13.7%	65.1%	78.7%
Pharmacy	0	0	0%	0	0.0%	0	0	0	0	0	0	0	0	0	0	0	0	0.0%	0.0%	0.0%
Science	753	0	0%	122	16.2%	9	10	0	15	1	56	39	0	472	29	0	631	21.1%	62.7%	83.8%
University Exploratory Studies Program	341	0	0%	56	16.4%	6	19	0	9	3	37	31	0	16	164	0	285	35.5%	48.1%	83.6%
Veterinary Medicine	0	0	0%	0	0%	0	0	0	0	0	0	0	0	0	0	0	0	0.0%	0.0%	0.0%
TOTAL	3,314	0	0%	561	16.9%	131	304	0	649	46	474	382	0	529	238	0	2,753	83.1%		83.1%

* Percentage of students transferred to other colleges from the college they originally enrolled in Fall 2008.

** Percentage of students continued in the same college as they originally enrolled in.

**Table 4.1 Fall 2009 First Time, Full Time, Degree Seeking Undergraduate Student Cohort
Net Gain / Loss by College (Fall 2009 - Fall 2010)**

COLLEGE	AG	BUS	ED	ENGR	FOR	PHHS	LA	PHARM	SCI	UESP	VM	Net Gain / Loss	Continued from original cohort		Fall 2010 Enrollment	
													%	%	#	%
Agricultural Sciences	0	1	0	2	0	-6	2	0	3	5	0	7	124	4.5%	131	4.8%
Business	-1	0	0	8	-3	-16	-12	0	5	11	0	-8	312	11.3%	304	11.0%
Education	0	0	0	0	0	0	0	0	0	0	0	0	0	0.0%	0	0.0%
Engineering	-2	-8	0	0	-6	-18	-17	0	-1	-12	0	-64	713	25.9%	649	23.6%
Forestry	0	3	0	6	0	1	0	0	-1	3	0	12	34	1.2%	46	1.7%
Public Health & Human Sciences	6	16	0	18	-1	0	13	0	48	31	0	131	343	12.5%	474	17.2%
Liberal Arts	-2	12	0	17	0	-13	0	0	35	22	0	71	311	11.3%	382	13.9%
Pharmacy	0	0	0	0	0	0	0	0	0	0	0	0	0	0.0%	0	0.0%
Science	-3	-5	0	1	1	-48	-35	0	0	-13	0	-102	631	22.9%	529	19.2%
University Exploratory Studies Program	-5	-11	0	12	-3	-31	-22	0	13	0	0	-47	285	10.4%	238	8.6%
Veterinary Medicine	0	0	0	0	0	0	0	0	0	0	0	0	0	0.0%	0	0.0%
Total												0	2,753	100%	2,753	100%

**Table 5: Fall 2009 First Time, Full Time, Degree Seeking Undergraduate Student Cohort
Movement Study (Fall 2009 - Fall 2011)**

COLLEGE	Cohort 2009	Grad. Total	Same college*	Other college**	Grad. Rate	Attr.	Attr. Rate	College Movement Pattern												Cont. Rate		Retention Rate
								AG	BUS	ED	ENGR	FOR	PHHS	LA	PHAR	SCI	UESP	VM	Subtotal	Trans.	College	
Agricultural Sciences	151	0	0	0	0.0%	33	21.9%	94	1	0	1	1	9	7	0	5	0	0	118	15.9%	62.3%	78.1%
Business	379	2	2	0	0.5%	96	25.3%	3	187	0	7	4	34	37	0	7	2	0	281	24.8%	49.3%	74.1%
Education	0	0	0	0	0.0%	0	0.0%	0	0	0	0	0	0	0	0	0	0	0	0	0.0%	0.0%	0.0%
Engineering	843	1	1	0	0.1%	191	22.7%	6	38	0	495	3	30	34	0	33	12	0	651	18.5%	58.7%	77.2%
Forestry	46	0	0	0	0.0%	12	26.1%	5	0	0	1	25	2	0	0	1	0	0	34	19.6%	54.3%	73.9%
Public Health & Human Sciences	406	0	0	0	0.0%	100	24.6%	2	12	0	0	1	266	21	0	4	0	0	306	9.9%	65.5%	75.4%
Liberal Arts	395	0	0	0	0.0%	120	30.4%	2	14	0	5	0	34	210	0	8	2	0	275	16.5%	53.2%	69.6%
Pharmacy	0	0	0	0	0.0%	0	0.0%	0	0	0	0	0	0	0	0	0	0	0	0	0.0%	0.0%	0.0%
Science	753	1	1	0	0.1%	179	23.8%	20	30	0	18	3	104	57	1	322	18	0	573	33.3%	42.8%	76.1%
University Exploratory Studies Program	341	0	0	0	0.0%	96	28.2%	15	22	0	11	5	65	75	0	22	30	0	245	63.0%	8.8%	71.8%
Veterinary Medicine	0	0	0	0	0.0%	0	0.0%	0	0	0	0	0	0	0	0	0	0	0	0	0.0%	0.0%	0.0%
TOTAL	3,314	4	4	0	0.1%	827	25.0%	147	304	0	538	42	544	441	1	402	64	0	2,483	74.9%	74.9%	

* Number of students graduated from the colleges same as that they enrolled originally in Fall 2009.

** Number of students transferred to other colleges from their originally enrolled cohort college and graduated from the colleges they've transferred to.

**Table 5.1: Fall 2009 First Time, Full Time, Degree Seeking Undergraduate Student Cohort
Net Gain / Loss by College (Fall 2009- Fall 2011)**

COLLEGE	AG	BUS	ED	ENGR	FOR	PHHS	LA	PHARM	SCI	UESP	VM	Net Gain/Loss	Continued from original cohort		Fall 2011 Enrollment	
													%	%	#	%
Agricultural Sciences	0	2	0	5	4	-7	-5	0	15	15	0	29	118	4.8%	147	5.9%
Business	-2	0	0	45	-4	-22	-23	0	23	20	0	37	281	11.3%	318	12.8%
Education	0	0	0	0	0	0	0	0	0	0	0	0	0	0.0%	0	0.0%
Engineering	-5	-45	0	0	-2	-30	-29	0	-15	-1	0	-127	651	26.2%	524	21.1%
Forestry	-4	4	0	2	0	-1	0	0	2	5	0	8	34	1.4%	42	1.7%
Public Health & Human Sciences	7	22	0	30	1	0	13	0	100	65	0	238	306	12.3%	544	21.9%
Liberal Arts	5	23	0	29	0	-13	0	0	49	73	0	166	275	11.1%	441	17.8%
Pharmacy	0	0	0	0	0	0	0	0	1	0	0	1	0	0.0%	1	0.0%
Science	-15	-23	0	15	-2	-100	-49	-1	0	-18	0	-193	573	23.1%	380	15.3%
University Exploratory Studies Program	-15	-20	0	1	-5	-65	-73	0	18	0	0	-159	245	9.9%	86	3.5%
Veterinary Medicine	0	0	0	0	0	0	0	0	0	0	0	0	0	0.0%	0	0.0%
Total												0	2,483	100%	2,483	100%

**Table 6: Fall 2009 First Time, Full Time, Degree Seeking Undergraduate Student Cohort
Movement Study (Fall 2009 - Fall 2012)**

COLLEGE	Cohort 2009	Grad. Total	Same college*	Other college**	Grad. Rate	Attr. Rate	Attr. Rate	College Movement Pattern												Cont. Rate		Retention Rate
								AG	BUS	ED	ENGR	FOR	PHHS	LA	PHAR	SCI	UESP	VM	Subtotal	Trans.	College	
Agricultural Sciences	151	4	3	1	2.6%	42	27.8%	81	3	0	1	1	8	5	0	5	0	1	105	15.9%	53.6%	69.5%
Business	379	7	5	2	1.8%	103	27.2%	3	164	0	5	4	35	48	0	6	4	0	269	27.7%	43.3%	71.0%
Education	0	0	0	0	0.0%	0	0.0%	0	0	0	0	0	0	0	0	0	0	0	0	0.0%	0.0%	0.0%
Engineering	843	9	6	3	1.1%	213	25.3%	9	43	0	449	3	33	41	0	35	8	0	621	20.4%	53.3%	73.7%
Forestry	46	3	3	0	6.5%	12	26.1%	6	0	0	1	21	2	0	0	1	0	0	31	21.7%	45.7%	67.4%
Public Health & Human Sciences	406	4	4	0	1.0%	114	28.1%	2	13	0	0	1	244	24	0	3	1	0	288	10.8%	60.1%	70.9%
Liberal Arts	395	5	3	2	1.3%	135	34.2%	2	23	0	4	0	41	176	0	8	1	0	255	20.0%	44.6%	64.6%
Pharmacy	0	0	0	0	0.0%	0	0.0%	0	0	0	0	0	0	0	0	0	0	0	0	0.0%	0.0%	0.0%
Science	753	16	13	3	2.1%	216	28.7%	27	30	0	16	3	109	67	10	252	5	2	521	35.7%	33.5%	69.2%
University Exploratory Studies Program	341	2	0	3	0.6%	110	32.3%	14	25	0	10	7	60	79	1	21	12	0	229	67.2%	0.0%	67.2%
Veterinary Medicine	0	0	0	0	0.0%	0	0.0%	0	0	0	0	0	0	0	0	0	0	0	0	0.0%	0.0%	0.0%
TOTAL	3,314	50	37	14	1.5%	945	28.5%	144	301	0	486	40	532	440	11	331	31	3	2,319	70.0%		70.0%

* Number of students graduated from the colleges same as that they enrolled originally in Fall 2009.

** Number of students transferred to other colleges from their originally enrolled cohort college and graduated from the colleges they've transferred to.

**Table 6.1: Fall 2009 First Time, Full Time, Degree Seeking Undergraduate Student Cohort
Net Gain / Loss by College (Fall 2009 - Fall 2012)**

COLLEGE	AG	BUS	ED	ENGR	FOR	PHHS	LA	PHAR	SCI	UESP	VM	Net Gain/Loss	Continued from original cohort		Fall 2012 Enrollment	
													%	%	#	%
Agricultural Sciences	0	0	0	8	5	-6	-3	0	22	14	-1	39	105	4.5%	144	6.2%
Business	0	0	0	48	-4	-22	-25	0	24	21	0	42	269	11.6%	311	13.4%
Education	0	0	0	0	0	0	0	0	0	0	0	0	0	0.0%	0	0.0%
Engineering	-8	-48	0	0	-2	-33	-37	0	-19	2	0	-145	621	26.8%	476	20.5%
Forestry	-5	4	0	2	0	-1	0	0	2	7	0	9	31	1.3%	40	1.7%
Public Health & Human Sciences	6	22	0	33	1	0	17	0	106	59	0	244	288	12.4%	532	22.9%
Liberal Arts	3	25	0	37	0	-17	0	0	59	78	0	185	255	11.0%	440	19.0%
Pharmacy	0	0	0	0	0	0	0	0	10	1	0	11	0	0.0%	11	0.5%
Science	-22	-24	0	19	-2	-106	-59	-10	0	-4	-2	-210	521	22.5%	311	13.4%
University Exploratory Studies Program	-14	-21	0	-2	-7	-59	-78	-1	4	0	0	-178	229	9.9%	51	2.2%
Veterinary Medicine	1	0	0	0	0	0	0	0	2	0	0	3	0	0.0%	3	0.1%
Total												0	2,319	100%	2,319	100%

**Table 7: Fall 2009 First Time, Full Time, Degree Seeking Undergraduate Student Cohort
Movement Study (Fall 2009 - Fall 2013)**

COLLEGE	Cohort 2009	Grad. Total	Same college	Other college	Grad. Rate	Attr.	Attr. Rate	College Movement Pattern												Cont. Rate		Retention Rate
								AG	BUS	ED	ENGR	FOR	PHHS	LA	PHAR	SCI	UESP	VM	Subtotal	Trans.	College	
Agricultural Sciences	151	66	55	11	43.7%	40	26.5%	35	2	0	0	0	3	3	0	2	0	0	45	6.6%	23.2%	29.8%
Business	379	105	69	36	27.7%	118	31.1%	3	82	0	3	2	27	30	0	5	4	0	156	19.5%	21.6%	41.2%
Education	0	0	0	0	0.0%	0	0.0%	0	0	0	0	0	0	0	0	0	0	0	0	0.0%	0.0%	0.0%
Engineering	843	203	146	57	24.1%	274	32.5%	8	30	0	245	6	23	31	0	19	4	0	366	43.4%	0.0%	43.4%
Forestry	46	14	9	5	30.4%	14	30.4%	3	0	0	1	13	1	0	0	0	0	0	18	37.0%	2.2%	39.1%
Public Health & Human Sciences	406	168	151	17	41.4%	120	29.6%	1	11	0	0	0	90	12	0	2	2	0	118	29.1%	0.0%	29.1%
Liberal Arts	395	126	93	33	31.9%	153	38.7%	1	11	0	4	0	21	74	0	5	0	0	116	10.6%	18.7%	29.4%
Pharmacy	0	0	0	0	0.0%	0	0.0%	0	0	0	0	0	0	0	0	0	0	0	0	0.0%	0.0%	0.0%
Science	753	299	187	112	39.7%	239	31.7%	15	18	0	8	2	55	43	1	68	3	2	215	19.5%	9.0%	28.6%
University Exploratory Studies Program	341	91	0	91	26.7%	121	35.5%	10	24	0	9	4	31	33	0	14	4	0	129	36.7%	1.2%	37.8%
Veterinary Medicine	0	0	0	0	0.0%	0	0.0%	0	0	0	0	0	0	0	0	0	0	0	0	0.0%	0.0%	0.0%
TOTAL	3,314	1072	710	362	32.3%	1,079	32.6%	76	178	0	270	27	251	226	1	115	17	2	1163	35.1%		35.1%

**Table 7.1: Fall 2009 First Time, Full Time, Degree Seeking Undergraduate Student Cohort
Net Gain / Loss by College (Fall 2009 - Fall 2013)**

COLLEGE	AG	BUS	ED	ENGR	FOR	PHHS	LA	PHAR	SCI	UESP	VM	Net Gain/Loss	Continued from original cohort		Fall 2013 Enrollment	
													%	%	#	%
Agricultural Sciences	0	1	0	8	3	-2	-2	0	13	10	0	31	45	3.9%	76	6.5%
Business	-1	0	0	27	-2	-16	-19	0	13	20	0	22	156	13.4%	178	15.3%
Education	0	0	0	0	0	0	0	0	0	0	0	0	0	0.0%	0	0.0%
Engineering	-8	-27	0	0	-5	-23	-27	0	-11	5	0	-96	366	31.5%	270	23.2%
Forestry	-3	2	0	5	0	-1	0	0	2	4	0	9	18	1.5%	27	2.3%
Public Health & Human Sciences	2	16	0	23	1	0	9	0	53	29	0	133	118	10.1%	251	21.6%
Liberal Arts	2	19	0	27	0	-9	0	0	38	33	0	110	116	10.0%	226	19.4%
Pharmacy	0	0	0	0	0	0	0	0	1	0	0	1	0	0.0%	1	0.1%
Science	-13	-13	0	11	-2	-53	-38	-1	0	11	-2	-100	215	18.5%	115	9.9%
University Exploratory Studies Program	-10	-20	0	-5	-4	-29	-33	0	-11	0	0	-112	129	11.1%	17	1.5%
Veterinary Medicine	0	0	0	0	0	0	0	0	2	0	0	2	0	0.0%	2	0.2%
Total												0	1163	100%	1163	100%

**Table 8: Fall 2009 First Time, Full Time, Degree Seeking Undergraduate Student Cohort
Movement Study (Fall 2009 - Fall 2014)**

COLLEGE	Cohort 2009	Grad. Total	Same college	Other college	Grad. Rate	Attr.	Attr. Rate	College Movement Pattern												Cont. Rate		Retention Rate
								AG	BUS	ED	ENGR	FOR	PHHS	LA	PHAR	SCI	UESP	VM	Subtotal	Trans.	College	
Agricultural Sciences	151	93	77	16	61.6%	45	29.8%	10	1	0	0	0	1	1	0	0	0	0	13	2.0%	6.6%	8.6%
Business	379	213	138	75	56.2%	123	32.5%	3	14	0	2	0	8	11	0	2	3	0	43	7.7%	3.7%	11.3%
Education	0	0	0	0	0.0%	0	0.0%	0	0	0	0	0	0	0	0	0	0	0	0	0.0%	0.0%	0.0%
Engineering	843	486	354	132	57.7%	253	30.0%	5	7	0	70	3	3	8	0	8	0	0	104	12.3%	0.0%	12.3%
Forestry	46	25	16	9	54.3%	14	30.4%	2	0	0	1	4	0	0	0	0	0	0	7	13.0%	2.2%	15.2%
Public Health & Human Sciences	406	261	238	23	64.3%	127	31.3%	0	1	0	0	0	13	4	0	0	0	0	18	4.4%	0.0%	4.4%
Liberal Arts	395	204	145	59	51.6%	163	41.3%	0	0	0	3	0	6	17	1	1	0	0	28	2.8%	4.3%	7.1%
Pharmacy	0	0	0	0	0.0%	0	0.0%	0	0	0	0	0	0	0	0	0	0	0	0	0.0%	0.0%	0.0%
Science	753	458	238	220	60.8%	236	31.3%	9	8	0	5	0	7	15	0	12	1	2	59	6.2%	1.6%	7.8%
University Exploratory Studies Program	341	185	0	185	54.3%	123	36.1%	2	8	0	3	1	4	9	0	5	1	0	33	9.4%	0.3%	9.7%
Veterinary Medicine	0	0	0	0	0.0%	0	0.0%	0	0	0	0	0	0	0	0	0	0	0	0	0.0%	0.0%	0.0%
TOTAL	3,314	1925	1206	719	58.1%	1084	32.7%	31	39	0	84	8	42	65	1	28	5	2	305	9.2%		9.2%

**Table 8.1: Fall 2009 First Time, Full Time, Degree Seeking Undergraduate Student Cohort
Net Gain / Loss by College (Fall 2009 - Fall 2014)**

COLLEGE	AG	BUS	ED	ENGR	FOR	PHHS	LA	PHAR	SCI	UESP	VM	Net Gain/Loss	Continued from original cohort		Fall 2014 Enrollment	
														%	#	%
Agricultural Sciences	0	2	0	5	2	-1	-1	0	9	2	0	18	13	4.3%	31	10.2%
Business	-2	0	0	5	0	-7	-11	0	6	5	0	-4	43	14.1%	39	12.8%
Education	0	0	0	0	0	0	0	0	0	0	0	0	0	0.0%	0	0.0%
Engineering	-5	-5	0	0	-2	-3	-5	0	-3	3	0	-20	104	34.1%	84	27.5%
Forestry	-2	0	0	2	0	0	0	0	0	1	0	1	7	2.3%	8	2.6%
Public Health & Human Sciences	1	7	0	3	0	0	2	0	7	4	0	24	18	5.9%	42	13.8%
Liberal Arts	1	11	0	5	0	-2	0	-1	14	9	0	37	28	9.2%	65	21.3%
Pharmacy	0	0	0	0	0	0	1	0	0	0	0	1	0	0.0%	1	0.3%
Science	-9	-6	0	3	0	-7	-14	0	0	4	-2	-31	59	19.3%	28	9.2%
University Exploratory Studies Program	-2	-5	0	-3	-1	-4	-9	0	-4	0	0	-28	33	10.8%	5	1.6%
Veterinary Medicine	0	0	0	0	0	0	0	0	2	0	0	2	0	0.0%	2	0.7%
Total												0	305	100%	305	100%

**Table 9: Fall 2009 First Time, Full Time, Degree Seeking Undergraduate Student Cohort
Movement Study (Fall 2009 - Fall 2015)**

COLLEGE	Cohort 2009	Grad. Total	Same college	Other college	Grad. Rate	Attr. Rate	Attr. Rate	College Movement Pattern												Cont. Rate		Retention Rate	
								AG	BUS	ED	ENGR	FOR	PHHS	LA	PHARM	SCI	UESP	VM	Subtotal	Trans.	College		
Agricultural Sciences	151	100	80	20	66.2%	47	31.1%	4	0	0	0	0	0	0	0	0	0	0	0	4	0.0%	2.6%	2.6%
Business	379	244	150	94	64.4%	127	33.5%	0	2	0	0	0	1	3	0	0	2	0	8	1.6%	0.5%	2.1%	
Education	0	0	0	0	0.0%	0	0.0%	0	0	0	0	0	0	0	0	0	0	0	0	0	0.0%	0.0%	0.0%
Engineering	843	557	401	156	66.1%	247	29.3%	2	3	0	24	1	2	1	0	5	1	0	39	1.8%	2.8%	4.6%	
Forestry	46	32	21	11	69.6%	12	26.1%	0	0	0	0	2	0	0	0	0	0	0	2	0.0%	4.3%	4.3%	
Public Health & Human Sciences	406	275	232	43	67.7%	129	31.8%	0	0	0	0	0	1	1	0	0	0	0	2	0.2%	0.2%	0.5%	
Liberal Arts	395	217	152	65	54.9%	167	42.3%	0	1	0	2	0	1	7	0	0	0	11	1.0%	1.8%	2.8%		
Pharmacy	0	0	0	0	0.0%	0	0.0%	0	0	0	0	0	0	0	0	0	0	0	0	0.0%	0.0%	0.0%	
Science	753	497	253	244	66.0%	236	31.3%	3	1	0	1	0	4	5	0	4	0	2	20	2.1%	0.5%	2.7%	
University Exploratory Studies Program	341	208	0	208	61.0%	127	37.2%	0	0	0	1	0	1	3	0	1	0	0	6	1.8%	0.0%	1.8%	
Veterinary Medicine	0	0	0	0	0.0%	0	0.0%	0	0	0	0	0	0	0	0	0	0	0	0	0.0%	0.0%	0.0%	
TOTAL	3,314	2130	1289	841	64.3%	1092	33.0%	9	7	0	28	3	10	20	0	10	3	2	92	2.8%	2.8%	2.8%	

* Students moving to College of Earth Ocean & Atmospheric Sciences included in Science totals.

**Table 9.1: Fall 2009 First Time, Full Time, Degree Seeking Undergraduate Student Cohort
Net Gain / Loss by College (Fall 2009 - Fall 2015)**

COLLEGE	AG	BUS	ED	ENGR	FOR	PHHS	LA	PHARM	SCI	UESP	VM	Net Gain/Loss	Continued from original cohort		Fall 2015 Enrollment	
													%	%	#	%
Agricultural Sciences	0	0	0	2	0	0	0	0	3	0	0	5	4	4.3%	9	9.8%
Business	0	0	0	3	0	-1	-2	0	1	-2	0	-1	8	8.7%	7	7.6%
Education	0	0	0	0	0	0	0	0	0	0	0	0	0	0.0%	0	0.0%
Engineering	-2	-3	0	0	-1	-2	1	0	-4	0	0	-11	39	42.4%	28	30.4%
Forestry	0	0	0	1	0	0	0	0	0	0	0	1	2	2.2%	3	3.3%
Public Health & Human Sciences	0	1	0	2	0	0	0	0	4	1	0	8	2	2.2%	10	10.9%
Liberal Arts	0	2	0	-1	0	0	0	0	5	3	0	9	11	12.0%	20	21.7%
Pharmacy	0	0	0	0	0	0	0	0	0	0	0	0	0	0.0%	0	0.0%
Science	-3	-1	0	4	0	-4	-5	0	0	1	-2	-10	20	21.7%	10	10.9%
University Exploratory Studies Program	0	2	0	0	0	-1	-3	0	-1	0	0	-3	6	6.5%	3	3.3%
Veterinary Medicine	0	0	0	0	0	0	0	0	2	0	0	2	0	0.0%	2	2.2%
Total												0	92	100%	92	100%

Source: Office of Institutional Research (6/1/2015)