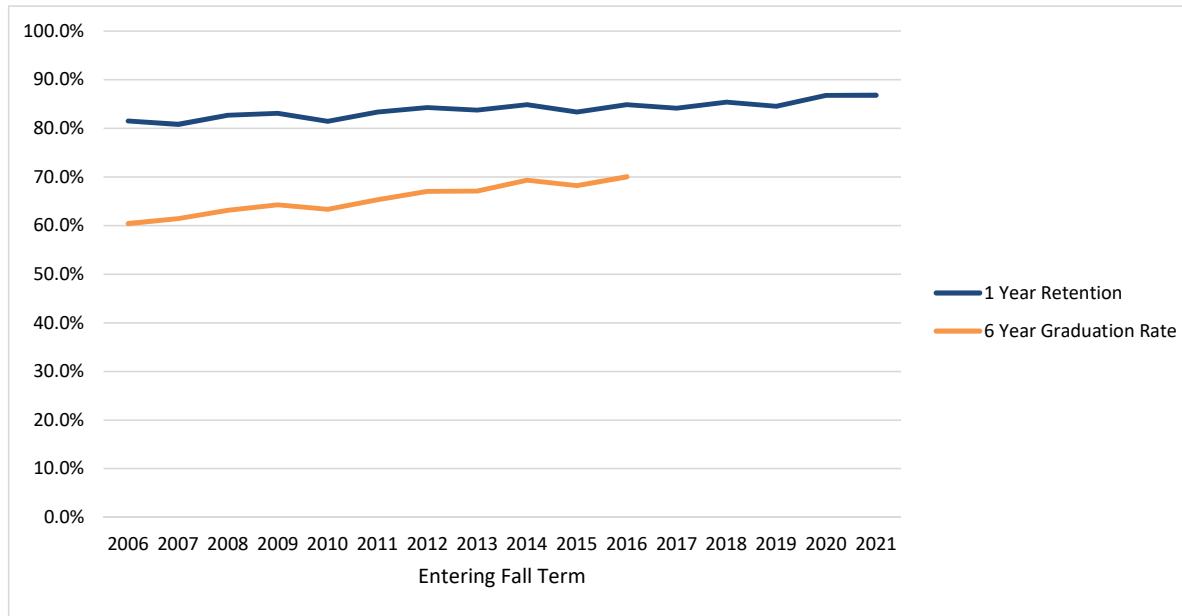


Retention and Graduation Rates of First-time, Full-time Degree Seeking Freshmen

OSU Total



Entering Fall Term	2006	2007	2008	2009	2010	2011	2012	2013	2014	2015	2016	2017	2018	2019	2020	2021
Cohort	2782	2972	3003	3314	3480	3335	3321	3553	3449	3338	3521	3418	3339	3041	3124	3603
1 Year Retention	81.5%	80.8%	82.7%	83.1%	81.5%	83.4%	84.3%	83.8%	84.9%	83.4%	84.8%	84.2%	85.4%	84.5%	86.8%	86.8%
6 Year Graduation Rate	60.4%	61.4%	63.1%	64.3%	63.3%	65.3%	67.0%	67.1%	69.3%	68.2%	70.0%					

Cohort: first-time college, full-time degree seeking undergraduates admitted for fall term or preceding summer term.

First-time: never matriculated as degree-seeking students at another college or university.

Full-time: enrolled in 12 or more credit hours in first fall term.

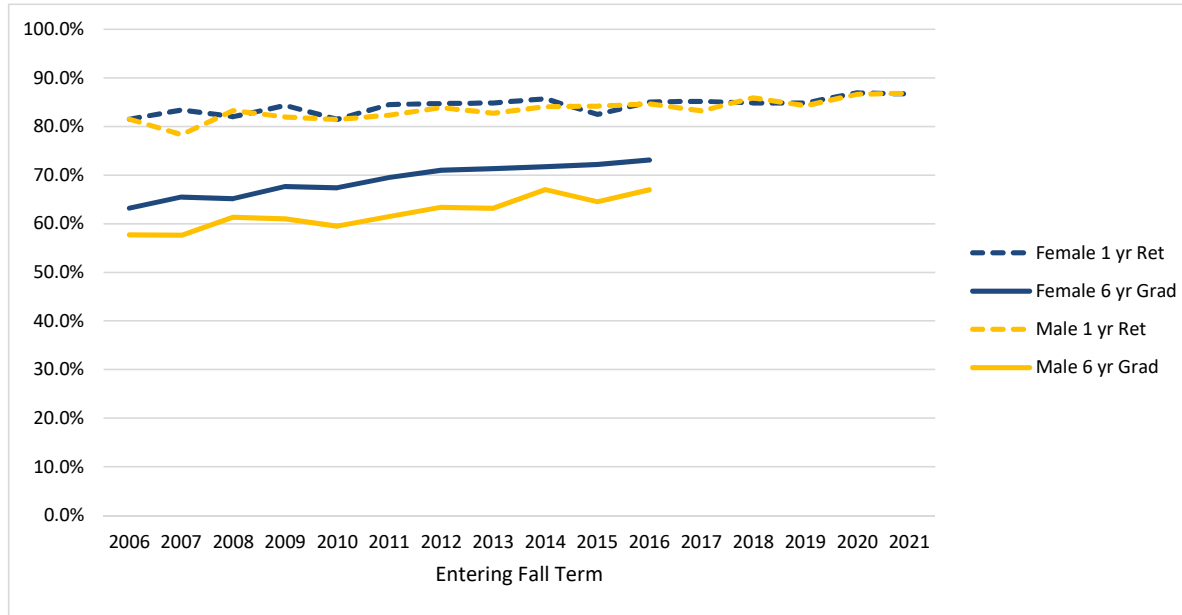
Retained: enrolled in a subsequent fall term but not yet graduated.

Graduated: received first bachelor's degree by the summer before the given following fall term.

Example, 6 year graduation counts degrees earned up to the summer before the seventh fall term.

Retention and Graduation Rates of First-time, Full-time Degree Seeking Freshmen

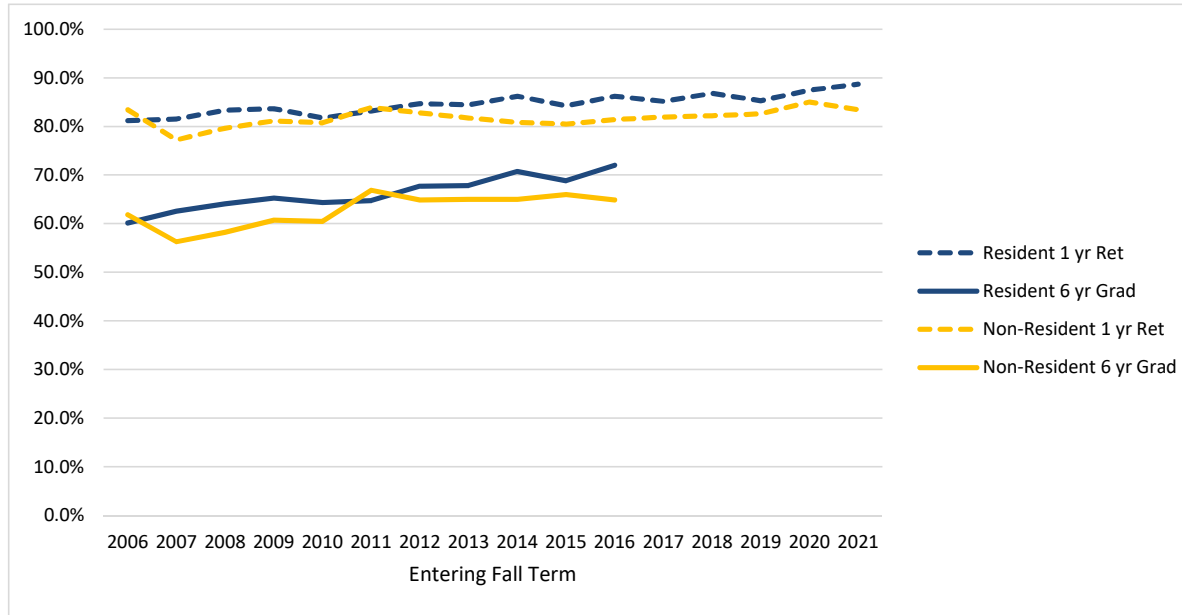
Female/ Male



Entering Fall Term	2006	2007	2008	2009	2010	2011	2012	2013	2014	2015	2016	2017	2018	2019	2020	2021
Female	1356	1436	1420	1621	1679	1599	1580	1706	1689	1596	1735	1660	1624	1483	1513	1746
Female 1 yr Ret	81.5%	83.4%	82.0%	84.3%	81.5%	84.5%	84.7%	84.9%	85.7%	82.5%	85.1%	85.2%	84.9%	84.8%	86.9%	86.7%
Female 6 yr Grad	63.2%	65.5%	65.1%	67.7%	67.4%	69.5%	71.0%	71.3%	71.8%	72.2%	73.1%					
Male	1426	1536	1583	1693	1801	1736	1741	1847	1760	1742	1788	1761	1717	1559	1612	1856
Male 1 yr Ret	81.5%	78.3%	83.3%	81.9%	81.5%	82.3%	83.9%	82.7%	84.0%	84.2%	84.6%	83.2%	85.9%	84.3%	86.6%	86.9%
Male 6 yr Grad	57.7%	57.6%	61.3%	61.0%	59.5%	61.5%	63.4%	63.2%	67.0%	64.5%	67.0%					

Retention and Graduation Rates of First-time, Full-time Degree Seeking Freshmen

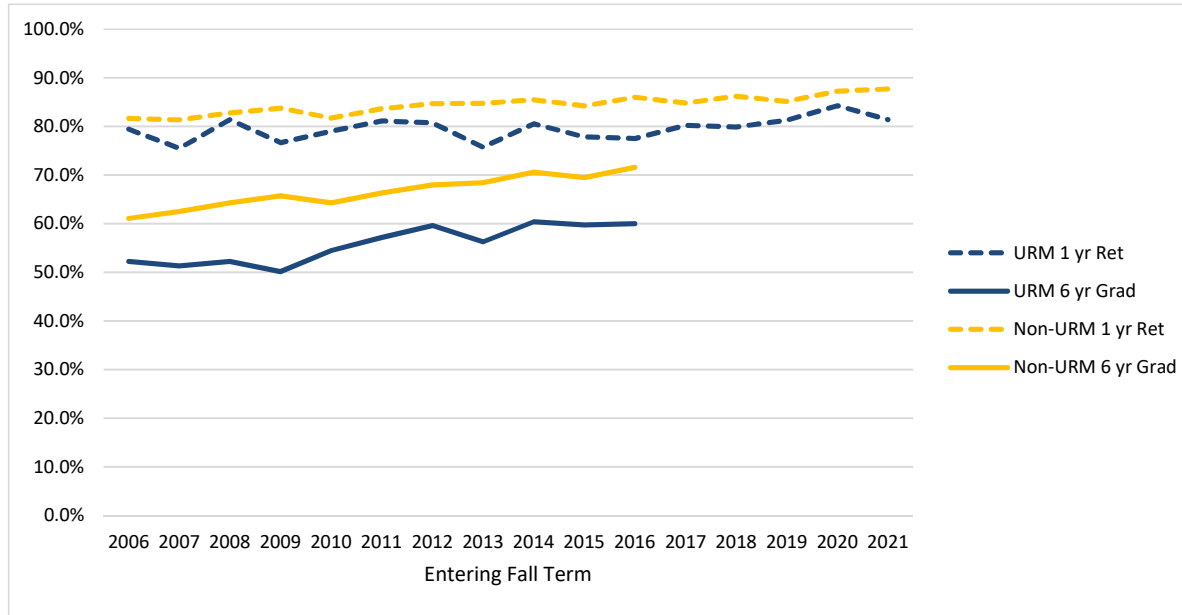
Oregon Resident/ Non-Resident



Entering Fall Term	2006	2007	2008	2009	2010	2011	2012	2013	2014	2015	2016	2017	2018	2019	2020	2021
Resident	2407	2432	2493	2588	2551	2459	2489	2633	2588	2544	2515	2406	2331	2256	2236	2283
Resident 1 yr Ret	81.2%	81.6%	83.3%	83.7%	81.7%	83.2%	84.7%	84.5%	86.2%	84.3%	86.2%	85.1%	86.8%	85.3%	87.5%	88.7%
Resident 6 yr Grad	60.2%	62.6%	64.1%	65.3%	64.4%	64.8%	67.7%	67.8%	70.7%	68.9%	72.0%					
Non-Resident	375	540	510	726	929	876	832	920	861	794	1008	1015	1010	786	889	1319
Non-Resident 1 yr Ret	83.5%	77.2%	79.6%	81.1%	80.7%	83.9%	82.8%	81.7%	80.8%	80.5%	81.4%	82.0%	82.2%	82.6%	85.0%	83.5%
Non-Resident 6 yr Grad	61.9%	56.3%	58.2%	60.7%	60.5%	66.9%	64.9%	65.0%	65.0%	66.0%	64.9%					

Retention and Graduation Rates of First-time, Full-time Degree Seeking Freshmen

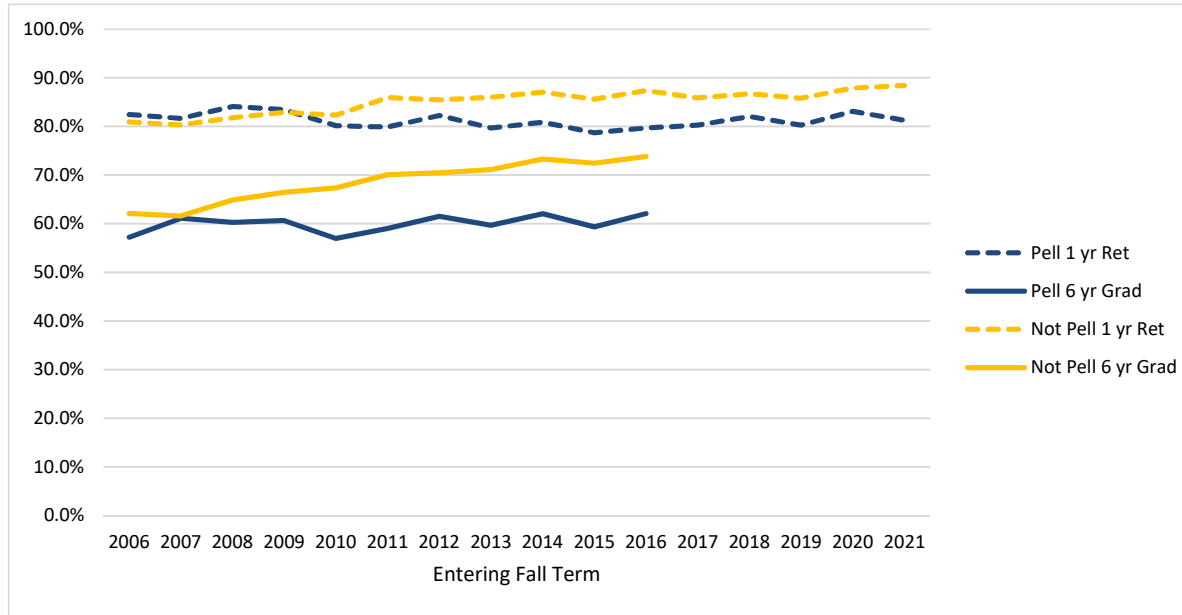
Underrepresented Ethnic Group (African American, American Indian/Alaska Native, Hispanic, Native Hawaiian/Pacific Islander)/ Non-URM



Entering Fall Term	2006	2007	2008	2009	2010	2011	2012	2013	2014	2015	2016	2017	2018	2019	2020	2021
URM	224	294	285	309	334	355	369	400	437	452	490	480	433	486	547	533
URM 1 yr Ret	79.5%	75.5%	81.4%	76.7%	79.0%	81.1%	80.8%	75.8%	80.5%	77.9%	77.6%	80.2%	79.9%	81.3%	84.3%	81.4%
URM 6 yr Grad	52.2%	51.4%	52.3%	50.2%	54.5%	57.2%	59.6%	56.3%	60.4%	59.7%	60.0%					
Non-URM	2558	2678	2718	3005	3146	2980	2952	3153	3012	2886	3033	2941	2908	2556	2578	3069
Non-URM 1 yr Ret	81.7%	81.4%	82.8%	83.8%	81.7%	83.6%	84.7%	84.8%	85.5%	84.2%	86.0%	84.8%	86.2%	85.2%	87.3%	87.7%
Non-URM 6 yr Grad	61.1%	62.5%	64.3%	65.7%	64.3%	66.3%	68.0%	68.5%	70.6%	69.5%	71.6%					

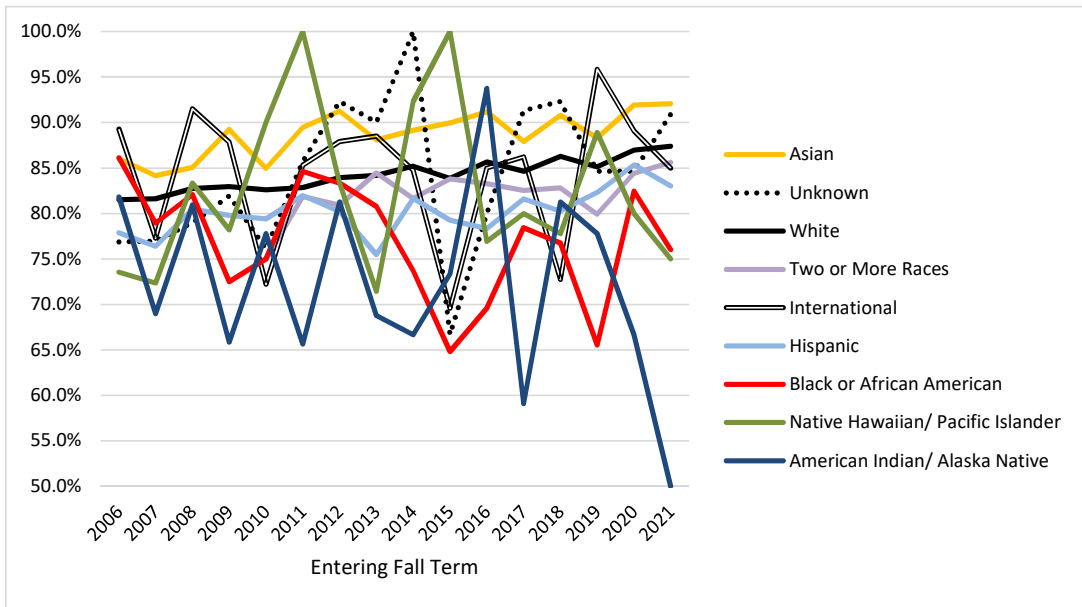
Retention and Graduation Rates of First-time, Full-time Degree Seeking Freshmen

Pell/ Not-Pell



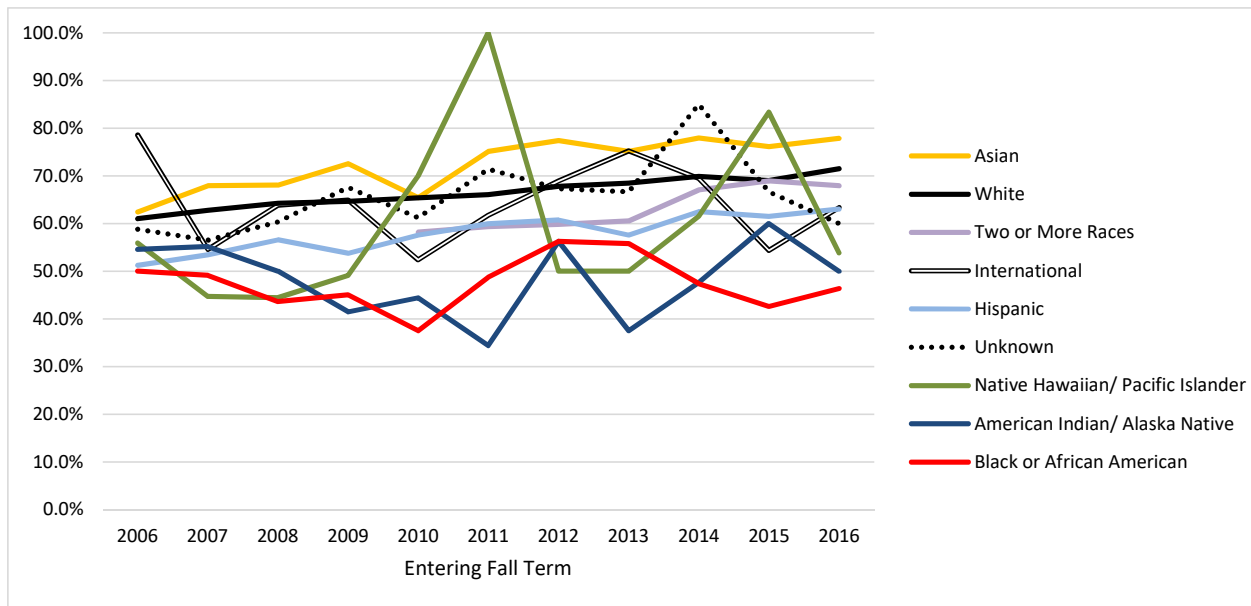
Entering Fall Term	2006	2007	2008	2009	2010	2011	2012	2013	2014	2015	2016	2017	2018	2019	2020	2021
Pell	975	1047	1127	1256	1348	1422	1278	1254	1222	1090	1139	1015	948	674	758	821
Pell 1 yr Ret	82.5%	81.7%	84.1%	83.4%	80.1%	79.9%	82.2%	79.7%	80.9%	78.7%	79.7%	80.3%	82.1%	80.3%	83.1%	81.2%
Pell 6 yr Grad	57.2%	61.1%	60.2%	60.7%	57.0%	59.0%	61.5%	59.6%	62.0%	59.4%	62.1%					
Not Pell	1807	1925	1876	2058	2132	1913	2043	2299	2227	2248	2382	2403	2391	2365	2364	2781
Not Pell 1 yr Ret	81.0%	80.3%	81.8%	82.9%	82.3%	85.9%	85.5%	86.0%	87.1%	85.6%	87.4%	85.9%	86.7%	85.8%	87.9%	88.4%
Not Pell 6 yr Grad	62.1%	61.6%	64.9%	66.5%	67.4%	70.0%	70.5%	71.2%	73.3%	72.5%	73.8%					

Ethnic Group 1 Year Retention Rates



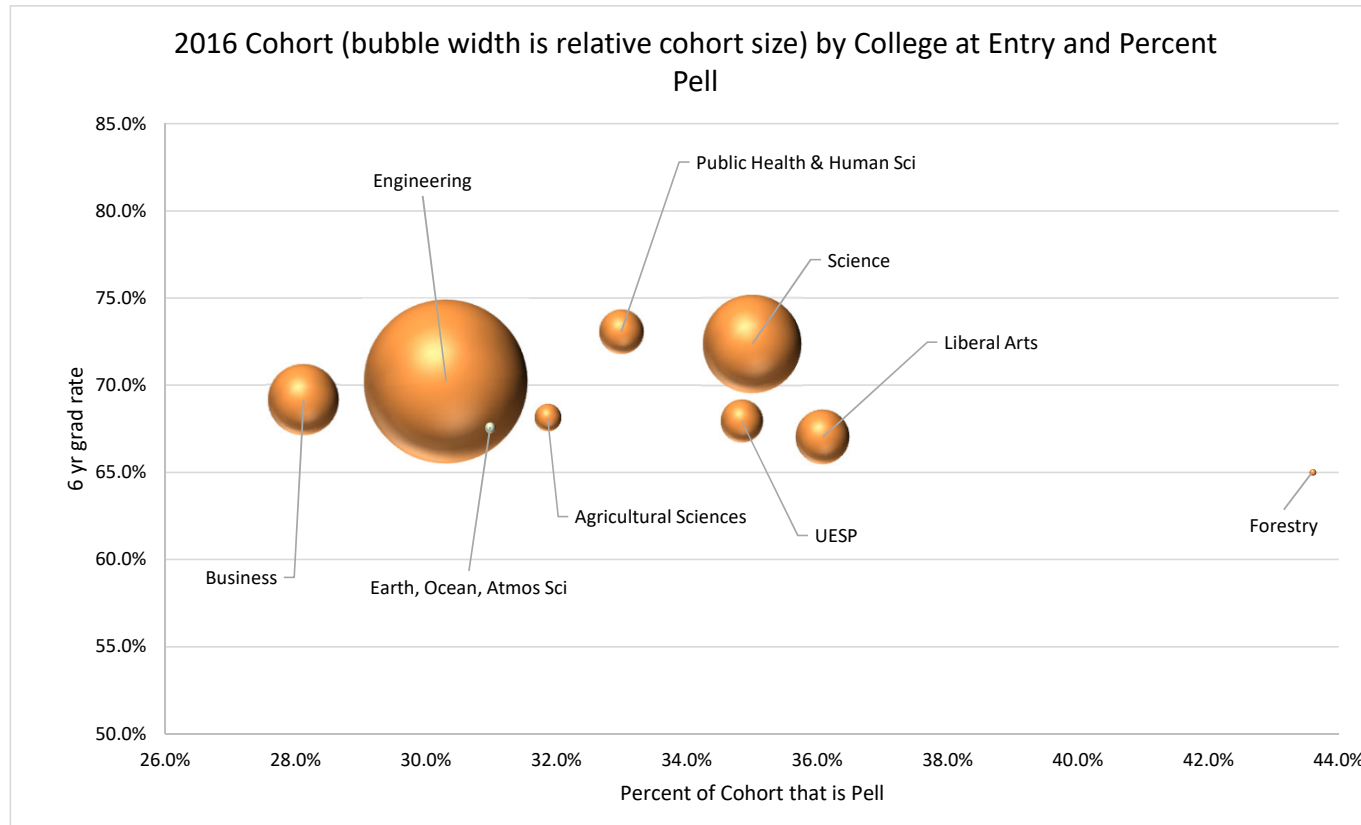
Entering Fall Term	2006	2007	2008	2009	2010	2011	2012	2013	2014	2015	2016	2017	2018	2019	2020	2021
American Indian/ Alaska Native	33 81.8%	29 69.0%	42 81.0%	41 65.9%	27 77.8%	32 65.6%	16 81.3%	16 68.8%	21 66.7%	15 73.3%	16 93.8%	22 59.1%	16 81.3%	18 77.8%	18 66.7%	12 50.0%
Asian	250 86.0%	290 84.1%	288 85.1%	353 89.2%	266 85.0%	294 89.5%	274 91.2%	285 88.1%	340 89.1%	318 89.9%	352 91.2%	289 87.9%	347 90.8%	282 88.3%	272 91.9%	340 92.1%
Black or African American	36 86.1%	57 78.9%	39 82.1%	40 72.5%	40 75.0%	39 84.6%	48 83.3%	52 80.8%	38 73.7%	54 64.8%	69 69.6%	51 78.4%	43 76.7%	29 65.5%	57 82.5%	50 76.0%
Hispanic	122 77.9%	161 76.4%	169 80.5%	173 79.8%	257 79.4%	277 81.9%	293 80.2%	318 75.5%	365 81.6%	371 79.2%	392 78.3%	402 81.6%	365 80.3%	430 82.3%	457 85.3%	459 83.0%
Native Hawaiian/ Pacific Islander	34 73.5%	47 72.3%	36 83.3%	55 78.2%	10 90.0%	7 100.0%	12 83.3%	14 71.4%	13 92.3%	12 100.0%	13 76.9%	5 80.0%	9 77.8%	9 88.9%	15 80.0%	12 75.0%
Two or More Races					220 75.0%	237 81.9%	267 80.9%	309 84.5%	283 81.6%	296 83.8%	287 83.3%	309 82.5%	308 82.8%	249 79.9%	257 84.4%	278 85.6%
Unknown	268 76.9%	269 77.0%	252 79.0%	188 81.9%	67 76.1%	21 85.7%	52 92.3%	30 90.0%	20 100.0%	15 66.7%	20 80.0%	23 91.3%	13 92.3%	13 84.6%	13 84.6%	33 90.9%
White	2016 81.5%	2076 81.6%	2132 82.7%	2391 82.9%	2468 82.6%	2330 82.8%	2271 83.9%	2416 84.2%	2314 85.2%	2212 83.9%	2314 85.7%	2262 84.6%	2185 86.3%	1964 85.1%	1972 87.0%	2338 87.4%
International	28 89.3%	44 77.3%	47 91.5%	74 87.8%	126 72.2%	102 85.3%	91 87.9%	113 88.5%	59 84.7%	46 69.6%	60 85.0%	58 86.2%	55 72.7%	48 95.8%	64 89.1%	80 85.0%

Ethnic Group 6 Year Graduation Rates



Entering Fall Term	2006	2007	2008	2009	2010	2011	2012	2013	2014	2015	2016	2017	2018	2019	2020	2021
American Indian/ Alaska Native	33 54.5%	29 55.2%	42 50.0%	41 41.5%	27 44.4%	32 34.4%	16 56.3%	16 37.5%	21 47.6%	15 60.0%	16 50.0%	22	16	18	18	12
Asian	250 62.4%	290 67.9%	288 68.1%	353 72.5%	266 65.4%	293 75.1%	274 77.4%	285 75.1%	340 77.9%	318 76.1%	352 77.8%	289	347	282	272	340
Black or African American	36 50.0%	57 49.1%	39 43.6%	40 45.0%	40 37.5%	39 48.7%	48 56.3%	52 55.8%	38 47.4%	54 42.6%	69 46.4%	51	43	29	57	50
Hispanic	121 51.2%	161 53.4%	168 56.5%	173 53.8%	257 57.6%	277 59.9%	293 60.8%	318 57.5%	365 62.5%	371 61.5%	392 63.0%	402	365	430	457	459
Native Hawaiian/ Pacific Islander	34 55.9%	47 44.7%	36 44.4%	55 49.1%	10 70.0%	7 100.0%	12 50.0%	14 50.0%	13 61.5%	12 83.3%	13 53.8%	5	9	9	15	12
Two or More Races					220 58.2%	236 59.3%	266 59.8%	309 60.5%	282 67.0%	296 68.9%	287 67.9%	309	308	249	257	278
Unknown	267 58.8%	269 56.5%	252 60.3%	188 67.6%	67 61.2%	21 71.4%	52 67.3%	30 66.7%	20 85.0%	15 66.7%	20 60.0%	23	13	13	13	33
White	2013 61.0%	2075 62.7%	2131 64.2%	2390 64.6%	2467 65.4%	2328 66.1%	2270 67.8%	2416 68.4%	2311 69.9%	2211 69.0%	2312 71.5%	2262	2185	1964	1972	2338
International	28 78.6%	44 54.5%	47 63.8%	74 64.9%	126 52.4%	102 61.8%	90 68.9%	113 75.2%	59 69.5%	46 54.3%	60 63.3%	58	55	48	64	80

2016 College Cohort 6 yr Grad Rate by Percent Pell

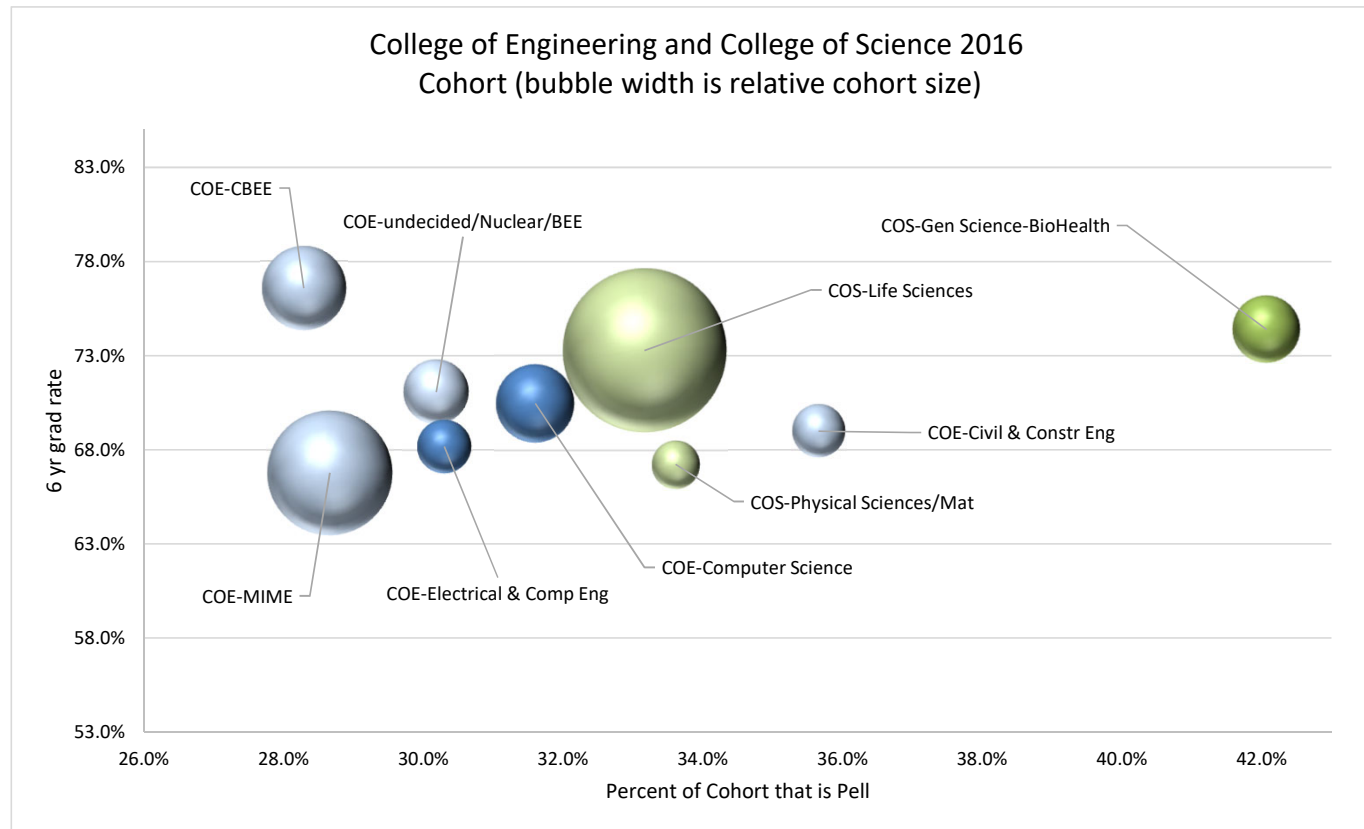


Pell percent provides a partial explanation for differences in college 6 year graduation rates, although many factors affect these rates. Pell students have lower graduation rates than non-Pell students, we expect lower graduation rates in colleges with higher Pell percent. However, Pell status is a function of time and federal policies. Number of students with Pell has been dropping and there has been a re-distribution of Pell percent across colleges, compared to the prior year cohort.

For the 2016 cohort, most colleges performed above expectation for Pell level. The following were particularly above expectation:
Public Health & Human Sciences, Science, Liberal Arts, UESP and Forestry.

Bubble widths provide the relative proportion of entering college cohorts. The next chart breaks up two of the larger cohorts into discipline groups.

2016 College of Engineering & College of Science Cohort 6 yr Grad Rate by Percent Pell



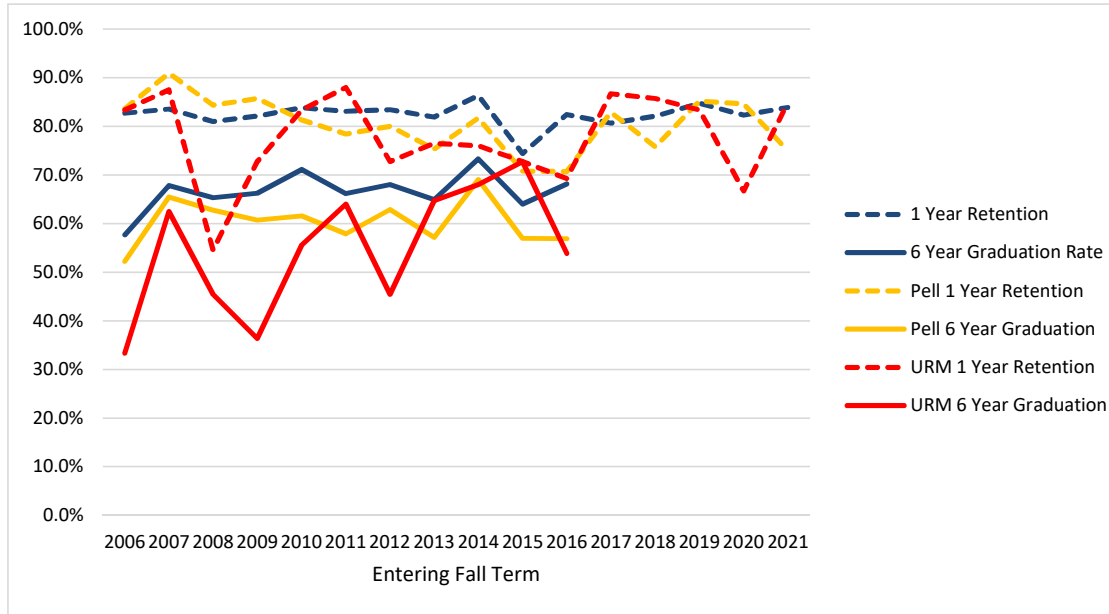
All Engineering discipline areas except for undecided/Nuclear/BEE saw significant increases in graduation rate, with the largest being Civil and Construction Engineering which increased about 12 percentage points. Undecided/Nuclear/BEE dropped about 5 percentage points. Growth led to Engineering seeing a record graduation rate, which impacted the overall OSU rate.

Life Sciences and Biohealth Sciences saw increases of about 6 percentage points, but Physical Science/Math saw about a 10% decrease.

CBEE has the highest proportion of females (48%) among Engineering areas which are typically about 13%. This may partially explain higher graduation rates as females tend to graduate at higher rates. This pattern also occurs in Science where areas with higher proportions of females have higher graduation rates: General/Biohealth Science is 67% female and Life Science is 66% female, but Physical Science/Math is 43% female.

Retention and Graduation Rates by College of Entering Primary Major

Agricultural Sciences

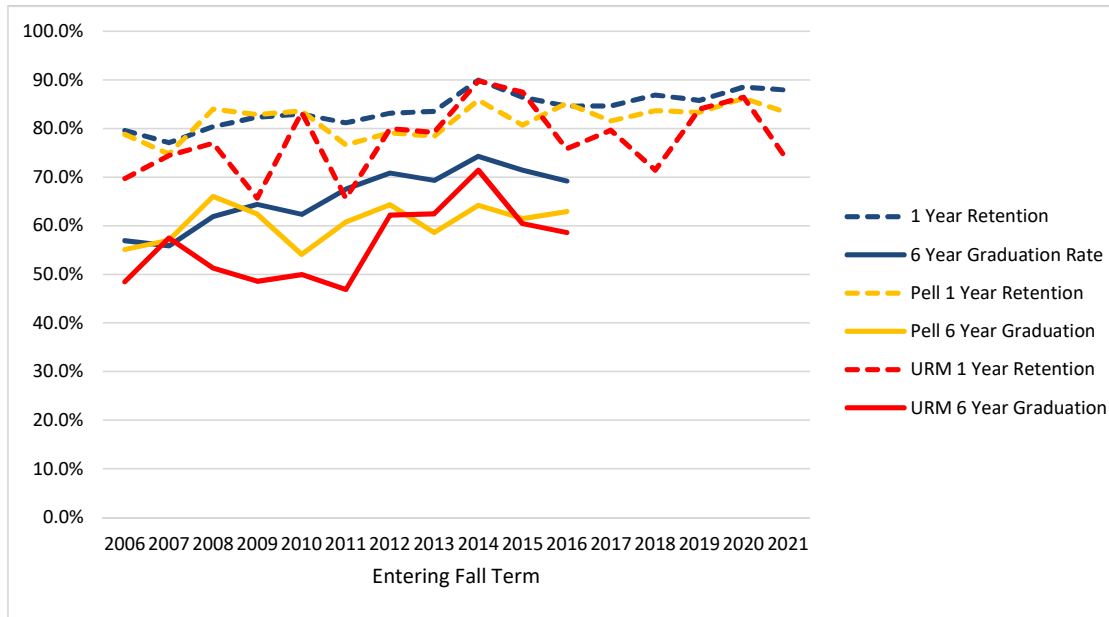


Entering Fall Term	2006	2007	2008	2009	2010	2011	2012	2013	2014	2015	2016	2017	2018	2019	2020	2021
Cohort	156	146	147	151	204	213	175	188	161	164	182	186	162	164	147	161
1 Year Retention	82.7%	83.6%	81.0%	82.1%	83.8%	83.1%	83.4%	81.9%	86.3%	74.4%	82.4%	80.6%	82.1%	84.8%	82.3%	83.9%
6 Year Graduation Rate	57.7%	67.8%	65.3%	66.2%	71.1%	66.2%	68.0%	64.9%	73.3%	64.0%	68.1%					
Pell	67	55	51	56	91	102	70	77	71	65	58	70	62	54	39	44
Pell 1 Year Retention	83.6%	90.9%	84.3%	85.7%	81.3%	78.4%	80.0%	75.3%	81.7%	70.8%	70.7%	82.9%	75.8%	85.2%	84.6%	75.0%
Pell 6 Year Graduation	52.2%	65.5%	62.7%	60.7%	61.5%	57.8%	62.9%	57.1%	69.0%	56.9%	56.9%					
URM	6	8	11	11	18	25	11	17	25	22	26	30	28	30	24	33
URM 1 Year Retention	83.3%	87.5%	54.5%	72.7%	83.3%	88.0%	72.7%	76.5%	76.0%	72.7%	69.2%	86.7%	85.7%	83.3%	66.7%	84.8%
URM 6 Year Graduation	33.3%	62.5%	45.5%	36.4%	55.6%	64.0%	45.5%	64.7%	68.0%	72.7%	53.8%					

- Retention and Graduation are to ANY major - not necessarily the primary major at entry.
- Pell is based on having a Pell grant at any point as an undergraduate, not just in term of entry.
- URM is standard federal Underrepresented Minority definition: American Indian/Alaska Native, Black or African American, Hispanic, Native Hawaiian/Pacific Islander

Retention and Graduation Rates by College of Entering Primary Major

Business

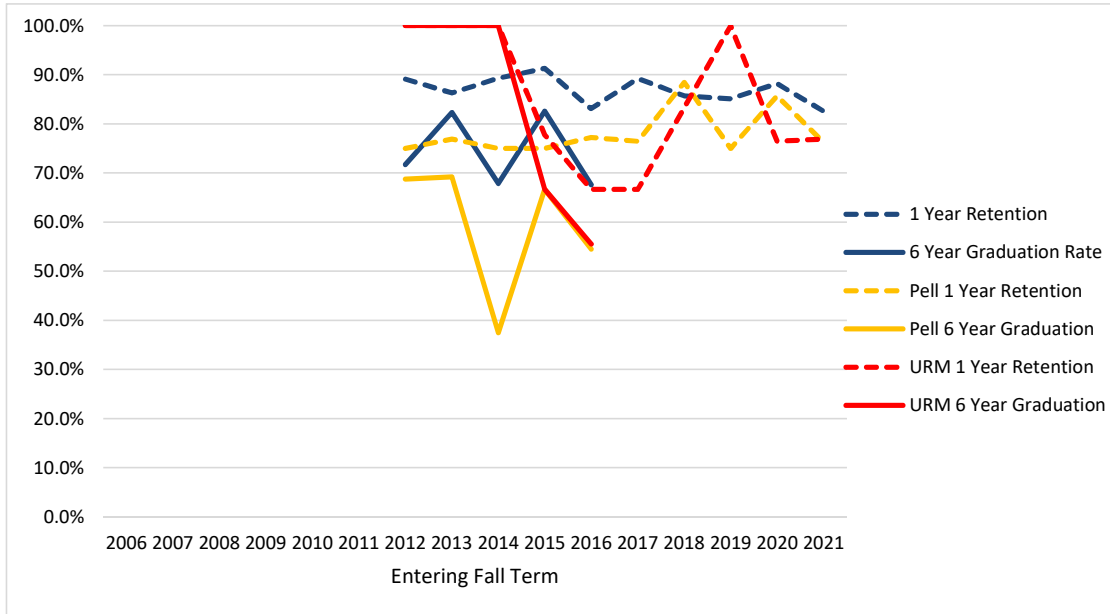


Entering Fall Term	2006	2007	2008	2009	2010	2011	2012	2013	2014	2015	2016	2017	2018	2019	2020	2021
Cohort	402	410	357	379	364	308	374	401	408	427	480	462	428	359	402	494
1 Year Retention	79.6%	77.1%	80.4%	82.3%	83.0%	81.2%	83.2%	83.5%	90.0%	86.4%	84.6%	84.6%	86.9%	85.8%	88.6%	87.9%
6 Year Graduation Rate	57.0%	55.9%	61.9%	64.4%	62.4%	67.5%	70.9%	69.3%	74.3%	71.4%	69.2%					
Pell	118	107	106	117	122	107	115	111	106	109	135	103	104	54	87	107
Pell 1 Year Retention	78.8%	74.8%	84.0%	82.9%	83.6%	76.6%	79.1%	78.4%	85.8%	80.7%	85.2%	81.6%	83.7%	83.3%	86.2%	83.2%
Pell 6 Year Graduation	55.1%	57.0%	66.0%	62.4%	54.1%	60.7%	64.3%	58.6%	64.2%	61.5%	63.0%					
URM	33	47	39	35	30	32	45	48	49	48	58	59	42	50	81	75
URM 1 Year Retention	69.7%	74.5%	76.9%	65.7%	83.3%	65.6%	80.0%	79.2%	89.8%	87.5%	75.9%	79.7%	71.4%	84.0%	86.4%	73.3%
URM 6 Year Graduation	48.5%	57.4%	51.3%	48.6%	50.0%	46.9%	62.2%	62.5%	71.4%	60.4%	58.6%					

- Retention and Graduation are to ANY major - not necessarily the primary major at entry.
- Pell is based on having a Pell grant at any point as an undergraduate, not just in term of entry.
- URM is standard federal Underrepresented Minority definition: American Indian/Alaska Native, Black or African American, Hispanic, Native Hawaiian/Pacific Islander

Retention and Graduation Rates by College of Entering Primary Major

Earth, Ocean, and Atmospheric Sciences

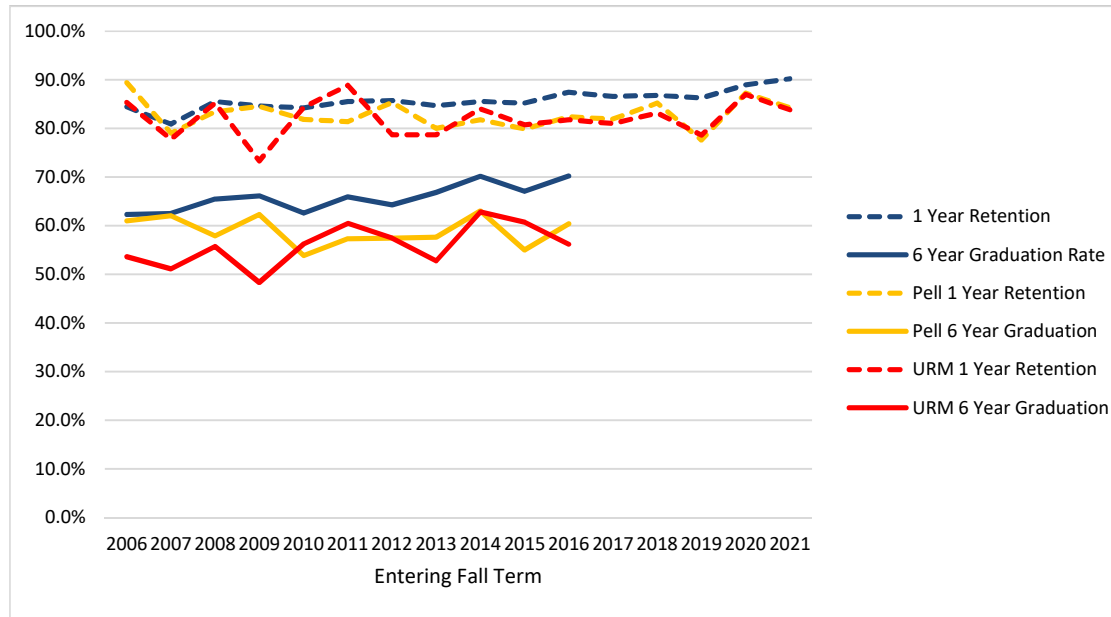


Entering Fall Term	2006	2007	2008	2009	2010	2011	2012	2013	2014	2015	2016	2017	2018	2019	2020	2021
Cohort							46	51	28	46	71	65	91	74	93	109
1 Year Retention							89.1%	86.3%	89.3%	91.3%	83.1%	89.2%	85.7%	85.1%	88.2%	82.6%
6 Year Graduation Rate							71.7%	82.4%	67.9%	82.6%	67.6%					
Pell					16	13	8	12	22	17	26	12	14	21		
Pell 1 Year Retention					75.0%	76.9%	75.0%	75.0%	77.3%	76.5%	88.5%	75.0%	85.7%	76.2%		
Pell 6 Year Graduation					68.8%	69.2%	37.5%	66.7%	54.5%							
URM					3	1	2	9	9	9	12	10	17	13		
URM 1 Year Retention					100.0%	100.0%	100.0%	77.8%	66.7%	66.7%	83.3%	100.0%	76.5%	76.9%		
URM 6 Year Graduation					100.0%	100.0%	100.0%	66.7%	55.6%							

- Retention and Graduation are to ANY major - not necessarily the primary major at entry.
- Pell is based on having a Pell grant at any point as an undergraduate, not just in term of entry.
- URM is standard federal Underrepresented Minority definition: American Indian/Alaska Native, Black or African American, Hispanic, Native Hawaiian/Pacific Islander

Retention and Graduation Rates by College of Entering Primary Major

Engineering

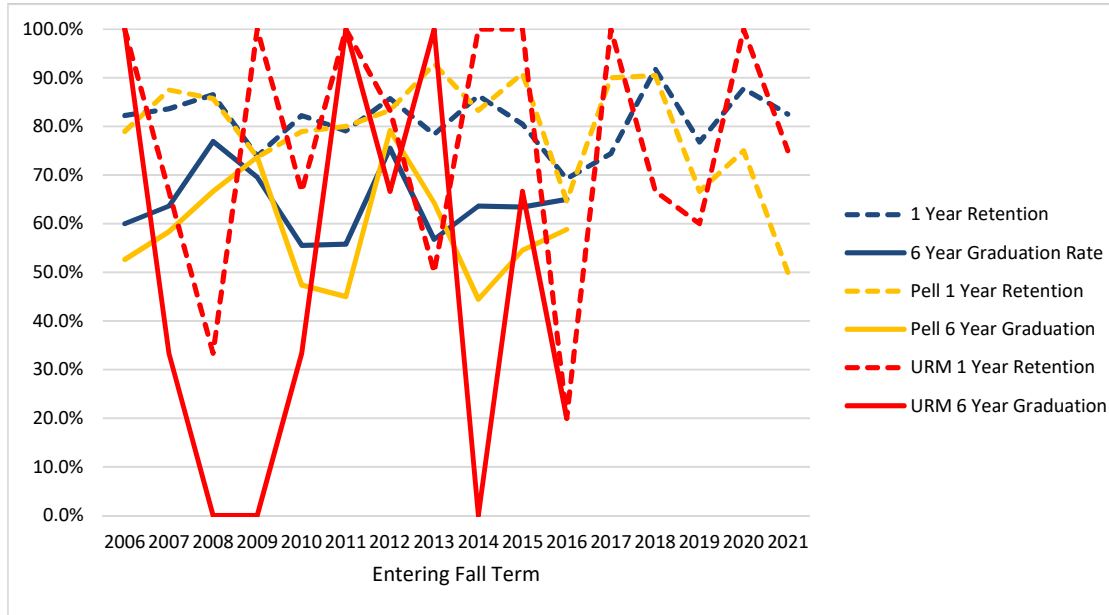


Entering Fall Term	2006	2007	2008	2009	2010	2011	2012	2013	2014	2015	2016	2017	2018	2019	2020	2021
Cohort	650	702	809	845	938	927	1051	1174	1123	1111	1125	1130	1122	1007	1091	1136
1 Year Retention	84.5%	80.9%	85.5%	84.6%	84.2%	85.5%	85.7%	84.7%	85.6%	85.2%	87.5%	86.6%	86.8%	86.3%	89.0%	90.2%
6 Year Graduation Rate	62.3%	62.5%	65.5%	66.2%	62.6%	65.9%	64.3%	66.9%	70.2%	67.1%	70.2%					
Pell	236	253	278	337	336	361	362	366	357	338	341	299	277	210	244	217
Pell 1 Year Retention	89.4%	79.1%	83.5%	84.6%	81.8%	81.4%	85.4%	80.1%	81.8%	79.9%	82.4%	81.9%	85.2%	77.6%	87.3%	84.3%
Pell 6 Year Graduation	61.0%	62.1%	57.9%	62.3%	53.9%	57.3%	57.5%	57.7%	63.0%	55.0%	60.4%					
URM	41	45	61	60	64	81	94	108	113	135	121	116	143	145	169	161
URM 1 Year Retention	85.4%	77.8%	85.2%	73.3%	84.4%	88.9%	78.7%	78.7%	84.1%	80.7%	81.8%	81.0%	83.2%	78.6%	87.0%	83.9%
URM 6 Year Graduation	53.7%	51.1%	55.7%	48.3%	56.3%	60.5%	57.4%	52.8%	62.8%	60.7%	56.2%					

- Retention and Graduation are to ANY major - not necessarily the primary major at entry.
- Pell is based on having a Pell grant at any point as an undergraduate, not just in term of entry.
- URM is standard federal Underrepresented Minority definition: American Indian/Alaska Native, Black or African American, Hispanic, Native Hawaiian/Pacific Islander

Retention and Graduation Rates by College of Entering Primary Major

Forestry

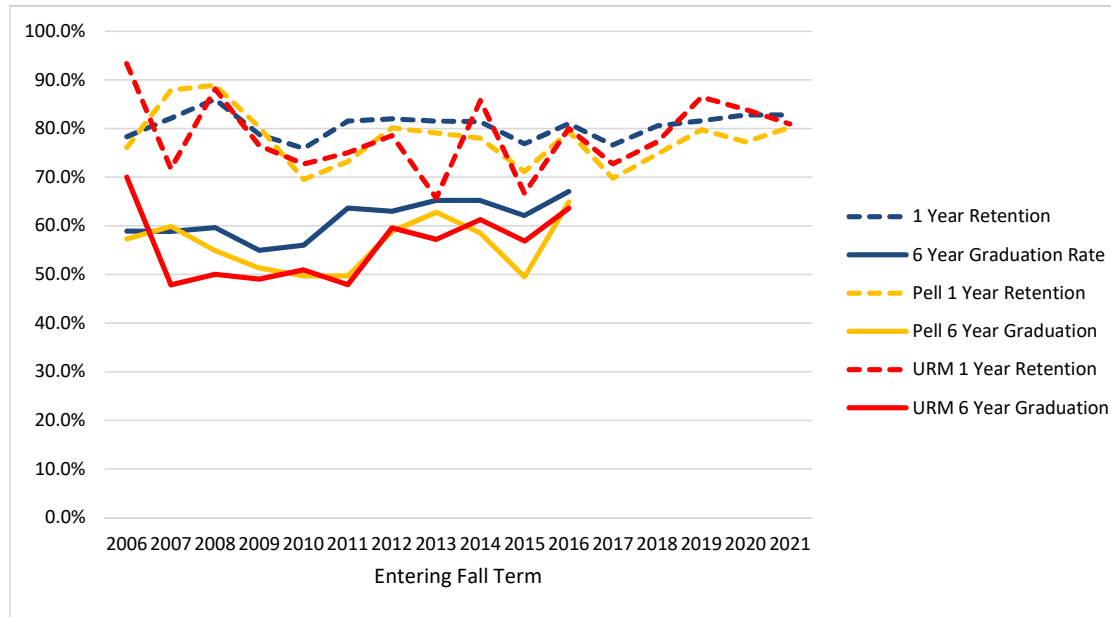


Entering Fall Term	2006	2007	2008	2009	2010	2011	2012	2013	2014	2015	2016	2017	2018	2019	2020	2021
Cohort	45	55	52	46	45	43	49	37	44	41	39	43	49	56	41	63
1 Year Retention	82.2%	83.6%	86.5%	73.9%	82.2%	79.1%	85.7%	78.4%	86.4%	80.5%	69.2%	74.4%	91.8%	76.8%	87.8%	82.5%
6 Year Graduation Rate	60.0%	63.6%	76.9%	69.6%	55.6%	55.8%	75.5%	56.8%	63.6%	63.4%	65.0%					
Pell	19	24	21	19	19	20	24	14	18	11	17	10	21	12	8	12
Pell 1 Year Retention	78.9%	87.5%	85.7%	73.7%	78.9%	80.0%	83.3%	92.9%	83.3%	90.9%	64.7%	90.0%	90.5%	66.7%	75.0%	50.0%
Pell 6 Year Graduation	52.6%	58.3%	66.7%	73.7%	47.4%	45.0%	79.2%	64.3%	44.4%	54.5%	58.8%					
URM	2	3	3	1	3	1	6	2	1	6	5	3	6	5	7	4
URM 1 Year Retention	100.0%	66.7%	33.3%	100.0%	66.7%	100.0%	83.3%	50.0%	100.0%	100.0%	20.0%	100.0%	66.7%	60.0%	100.0%	75.0%
URM 6 Year Graduation	100.0%	33.3%	0.0%	0.0%	33.3%	100.0%	66.7%	100.0%	0.0%	66.7%	20.0%					

- Retention and Graduation are to ANY major - not necessarily the primary major at entry.
- Pell is based on having a Pell grant at any point as an undergraduate, not just in term of entry.
- URM is standard federal Underrepresented Minority definition: American Indian/Alaska Native, Black or African American, Hispanic, Native Hawaiian/Pacific Islander

Retention and Graduation Rates by College of Entering Primary Major

Liberal Arts

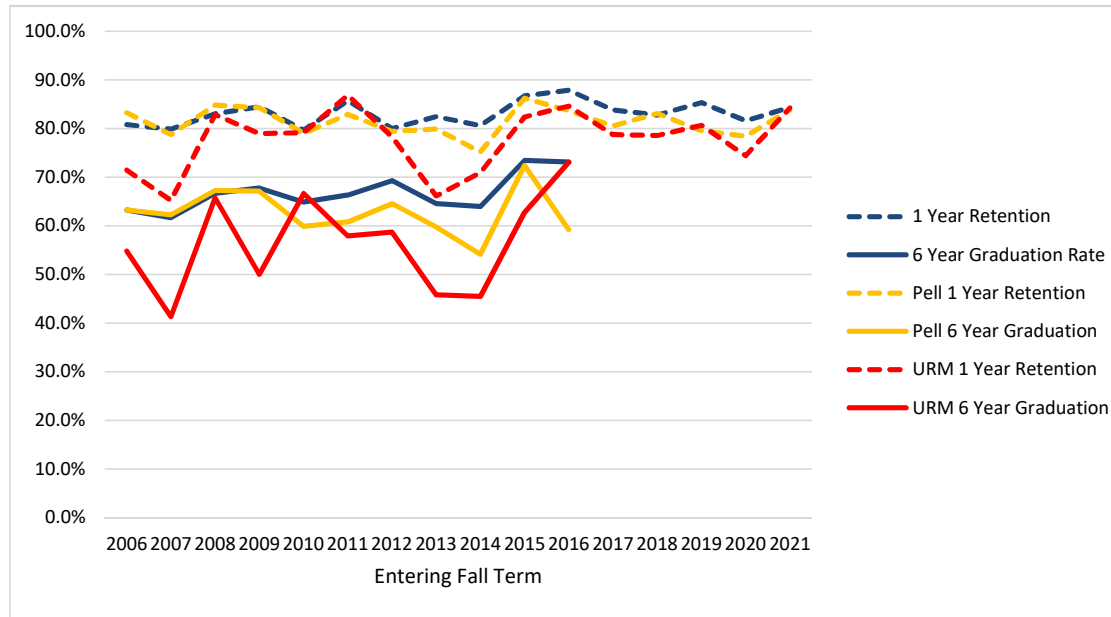


Entering Fall Term	2006	2007	2008	2009	2010	2011	2012	2013	2014	2015	2016	2017	2018	2019	2020	2021
Cohort	304	352	329	395	386	341	278	336	296	285	363	299	298	321	319	406
1 Year Retention	78.3%	82.1%	86.0%	78.7%	75.9%	81.5%	82.0%	81.5%	81.4%	76.8%	81.0%	76.6%	80.5%	81.6%	82.8%	82.8%
6 Year Graduation Rate	58.9%	58.8%	59.6%	54.9%	56.0%	63.6%	62.9%	65.2%	65.2%	62.1%	67.0%					
Pell	96	132	144	152	151	153	141	129	118	97	131	109	103	84	88	106
Pell 1 Year Retention	76.0%	87.9%	88.9%	80.3%	69.5%	73.2%	80.1%	79.1%	78.0%	71.1%	79.4%	69.7%	74.8%	79.8%	77.3%	80.2%
Pell 6 Year Graduation	57.3%	59.8%	54.9%	51.3%	49.7%	49.7%	58.9%	62.8%	58.5%	49.5%	64.9%					
URM	30	46	42	51	55	48	42	35	49	51	55	55	44	59	62	63
URM 1 Year Retention	93.3%	71.7%	88.1%	76.5%	72.7%	75.0%	78.6%	65.7%	85.7%	66.7%	80.0%	72.7%	77.3%	86.4%	83.9%	81.0%
URM 6 Year Graduation	70.0%	47.8%	50.0%	49.0%	50.9%	47.9%	59.5%	57.1%	61.2%	56.9%	63.6%					

- Retention and Graduation are to ANY major - not necessarily the primary major at entry.
- Pell is based on having a Pell grant at any point as an undergraduate, not just in term of entry.
- URM is standard federal Underrepresented Minority definition: American Indian/Alaska Native, Black or African American, Hispanic, Native Hawaiian/Pacific Islander

Retention and Graduation Rates by College of Entering Primary Major

Public Health and Human Sciences

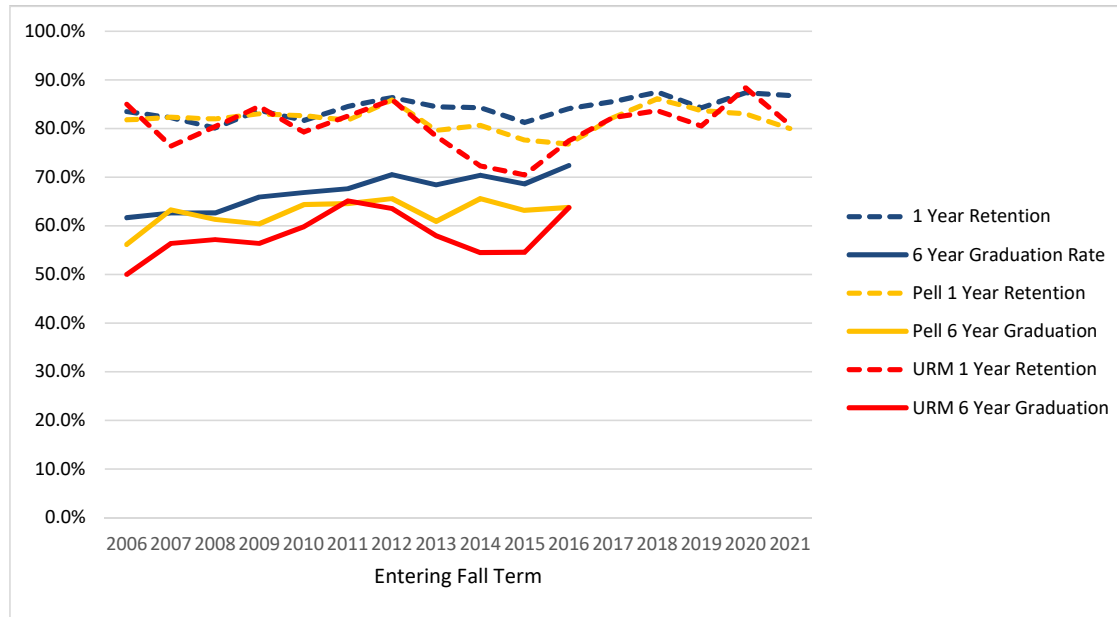


Entering Fall Term	2006	2007	2008	2009	2010	2011	2012	2013	2014	2015	2016	2017	2018	2019	2020	2021
Cohort	364	378	318	406	418	407	355	364	330	286	297	247	226	191	190	243
1 Year Retention	80.8%	79.9%	83.0%	84.5%	79.7%	85.7%	80.0%	82.4%	80.6%	86.7%	87.9%	83.8%	82.7%	85.3%	81.6%	84.4%
6 Year Graduation Rate	63.2%	61.6%	66.7%	67.7%	64.8%	66.3%	69.3%	64.6%	63.9%	73.4%	73.1%					
Pell	125	127	125	146	157	181	141	134	133	116	98	77	65	44	51	68
Pell 1 Year Retention	83.2%	78.7%	84.8%	84.2%	79.0%	82.9%	79.4%	79.9%	75.2%	86.2%	83.7%	80.5%	83.1%	79.5%	78.4%	83.8%
Pell 6 Year Graduation	63.2%	62.2%	67.2%	67.1%	59.9%	60.8%	64.5%	59.7%	54.1%	72.4%	59.2%					
URM	42	46	35	38	48	38	46	59	55	51	52	47	28	31	43	38
URM 1 Year Retention	71.4%	65.2%	82.9%	78.9%	79.2%	86.8%	78.3%	66.1%	70.9%	82.4%	84.6%	78.7%	78.6%	80.6%	74.4%	84.2%
URM 6 Year Graduation	54.8%	41.3%	65.7%	50.0%	66.7%	57.9%	58.7%	45.8%	45.5%	62.7%	73.1%					

- Retention and Graduation are to ANY major - not necessarily the primary major at entry.
- Pell is based on having a Pell grant at any point as an undergraduate, not just in term of entry.
- URM is standard federal Underrepresented Minority definition: American Indian/Alaska Native, Black or African American, Hispanic, Native Hawaiian/Pacific Islander

Retention and Graduation Rates by College of Entering Primary Major

Science

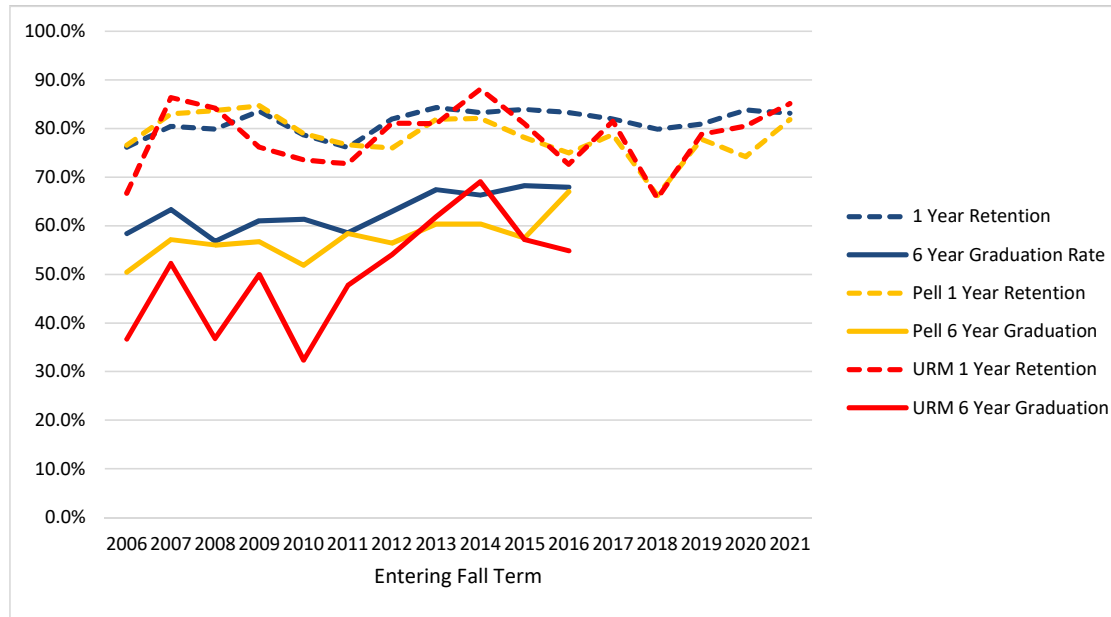


Entering Fall Term	2006	2007	2008	2009	2010	2011	2012	2013	2014	2015	2016	2017	2018	2019	2020	2021
Cohort	545	607	653	751	778	732	661	677	712	660	677	676	695	649	600	694
1 Year Retention	83.5%	82.2%	80.1%	83.8%	81.6%	84.6%	86.4%	84.5%	84.3%	81.2%	84.0%	85.5%	87.5%	84.3%	87.3%	86.7%
6 Year Graduation Rate	61.7%	62.6%	62.6%	65.9%	66.8%	67.6%	70.5%	68.4%	70.4%	68.6%	72.4%					
Pell	203	237	261	318	339	361	276	294	305	255	237	236	216	159	166	181
Pell 1 Year Retention	81.8%	82.3%	82.0%	83.0%	82.6%	81.7%	85.9%	79.6%	80.7%	77.6%	76.8%	82.2%	86.1%	83.6%	83.0%	80.0%
Pell 6 Year Graduation	56.2%	63.3%	61.3%	60.4%	64.3%	64.5%	65.6%	60.9%	65.6%	63.1%	63.7%					
URM	40	55	56	71	82	86	85	88	101	88	102	107	98	123	103	99
URM 1 Year Retention	85.0%	76.4%	80.4%	84.5%	79.3%	82.6%	85.9%	78.4%	72.3%	70.5%	77.5%	82.2%	83.7%	80.5%	88.3%	80.8%
URM 6 Year Graduation	50.0%	56.4%	57.1%	56.3%	59.8%	65.1%	63.5%	58.0%	54.5%	54.5%	63.7%					

- Retention and Graduation are to ANY major - not necessarily the primary major at entry.
- Pell is based on having a Pell grant at any point as an undergraduate, not just in term of entry.
- URM is standard federal Underrepresented Minority definition: American Indian/Alaska Native, Black or African American, Hispanic, Native Hawaiian/Pacific Islander

Retention and Graduation Rates by College of Entering Primary Major

University Exploratory Studies

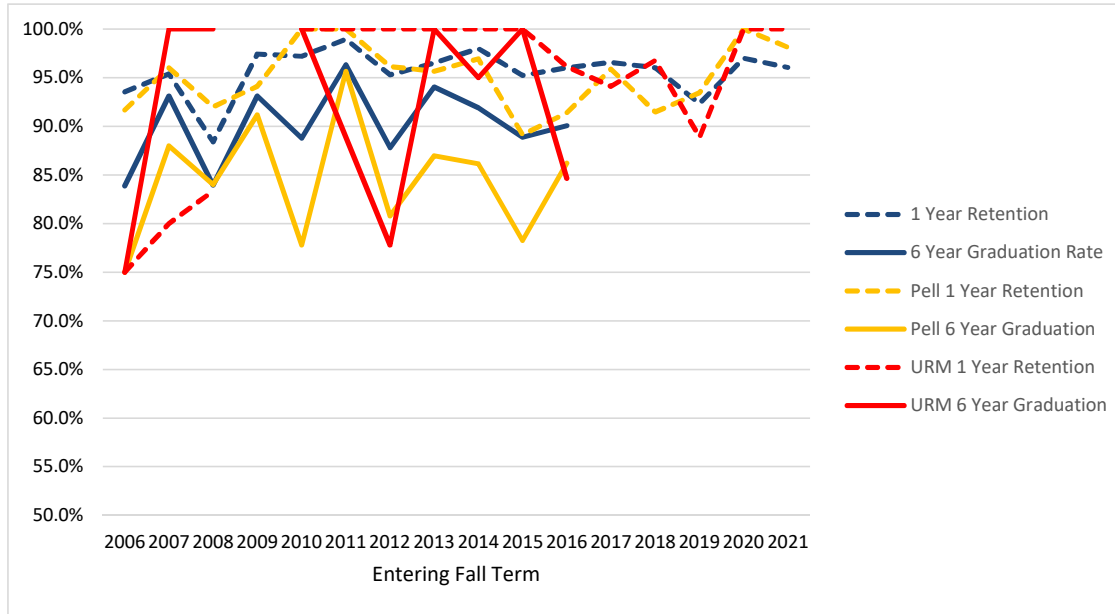


Entering Fall Term	2006	2007	2008	2009	2010	2011	2012	2013	2014	2015	2016	2017	2018	2019	2020	2021
Cohort	315	322	338	341	347	364	332	325	347	318	287	310	268	220	241	297
1 Year Retention	76.2%	80.4%	79.9%	83.6%	78.7%	76.1%	81.9%	84.3%	83.3%	84.0%	83.3%	81.9%	79.9%	80.9%	83.8%	83.2%
6 Year Graduation Rate	58.4%	63.4%	56.8%	61.0%	61.4%	58.5%	63.0%	67.4%	66.3%	68.2%	67.9%					
Pell	111	112	141	111	133	137	133	116	106	87	100	94	74	45	62	66
Pell 1 Year Retention	76.6%	83.0%	83.7%	84.7%	78.9%	76.6%	75.9%	81.9%	82.1%	78.2%	75.0%	78.7%	66.2%	77.8%	74.2%	81.8%
Pell 6 Year Graduation	50.5%	57.1%	56.0%	56.8%	51.9%	58.4%	56.4%	60.3%	60.4%	57.5%	67.0%					
URM	30	44	38	42	34	44	37	42	42	42	62	54	32	33	41	47
URM 1 Year Retention	66.7%	86.4%	84.2%	76.2%	73.5%	72.7%	81.1%	81.0%	88.1%	81.0%	72.6%	81.5%	65.6%	78.8%	80.5%	85.1%
URM 6 Year Graduation	36.7%	52.3%	36.8%	50.0%	32.4%	47.7%	54.1%	61.9%	69.0%	57.1%	54.8%					

- Retention and Graduation are to ANY major - not necessarily the primary major at entry.
- Pell is based on having a Pell grant at any point as an undergraduate, not just in term of entry.
- URM is standard federal Underrepresented Minority definition: American Indian/Alaska Native, Black or African American, Hispanic, Native Hawaiian/Pacific Islander

Retention and Graduation Rates

Honors College

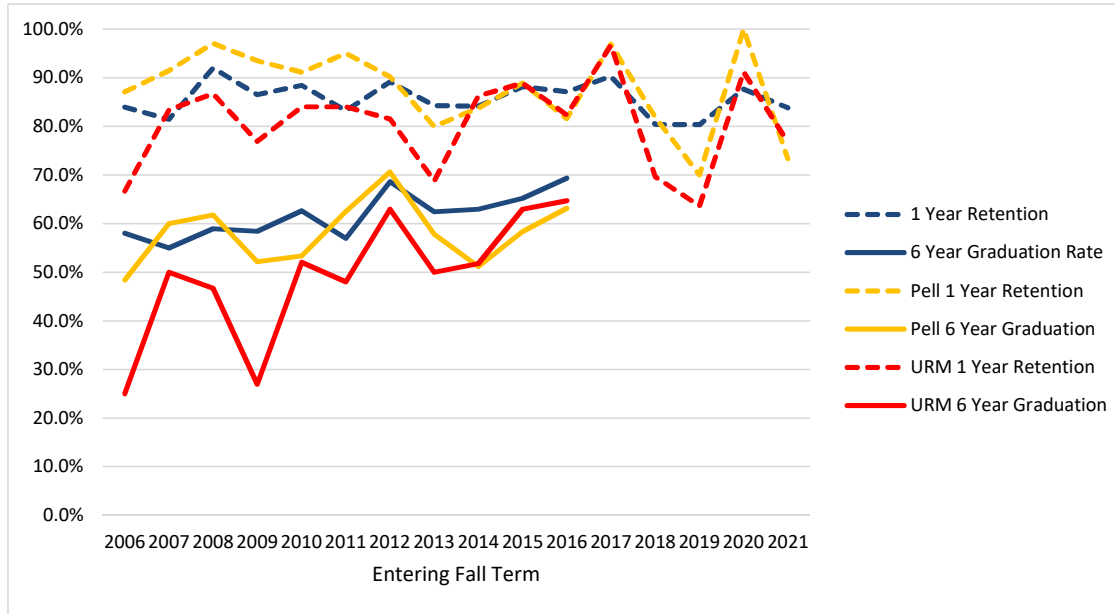


Entering Fall Term	2006	2007	2008	2009	2010	2011	2012	2013	2014	2015	2016	2017	2018	2019	2020	2021
Cohort	62	87	112	116	178	190	213	201	296	252	352	378	451	418	466	457
1 Year Retention	93.5%	95.4%	88.4%	97.4%	97.2%	98.9%	95.3%	96.5%	98.0%	95.2%	96.0%	96.6%	96.0%	92.3%	97.0%	96.1%
6 Year Graduation Rate	83.9%	93.1%	83.9%	93.1%	88.8%	96.3%	87.8%	94.0%	91.9%	88.9%	90.1%					
Pell	12	25	25	34	45	46	52	46	65	46	58	73	82	61	69	53
Pell 1 Year Retention	91.7%	96.0%	92.0%	94.1%	100.0%	100.0%	96.2%	95.7%	96.9%	89.1%	91.4%	95.9%	91.5%	93.4%	100.0%	98.1%
Pell 6 Year Graduation	75.0%	88.0%	84.0%	91.2%	77.8%	95.7%	80.8%	87.0%	86.2%	78.3%	86.2%					
URM	4	5	6	0	8	9	9	12	20	15	26	34	31	45	63	29
URM 1 Year Retention	75.0%	80.0%	83.3%		100.0%	100.0%	100.0%	100.0%	100.0%	100.0%	96.2%	94.1%	96.8%	88.9%	100.0%	100.0%
URM 6 Year Graduation	75.0%	100.0%	100.0%		100.0%	88.9%	77.8%	100.0%	95.0%	100.0%	84.6%					

- Based on Honors College identifier in first fall term
- These students are also counted in their respective entering college

Retention and Graduation Rates

Student Athletes



Entering Fall Term	2006	2007	2008	2009	2010	2011	2012	2013	2014	2015	2016	2017	2018	2019	2020	2021
Cohort	112	151	112	178	147	137	156	165	170	135	163	133	158	61	113	148
1 Year Retention	83.9%	81.5%	92.0%	86.5%	88.4%	83.2%	89.1%	84.2%	84.1%	88.1%	87.1%	90.2%	80.4%	80.3%	87.6%	83.8%
6 Year Graduation Rate	58.0%	55.0%	58.9%	58.4%	62.6%	56.9%	68.6%	62.4%	62.9%	65.2%	69.3%					
Pell	31	35	34	46	45	40	51	45	43	36	38	32	22	10	9	15
Pell 1 Year Retention	87.1%	91.4%	97.1%	93.5%	91.1%	95.0%	90.2%	80.0%	83.7%	88.9%	81.6%	96.9%	81.8%	70.0%	100.0%	73.3%
Pell 6 Year Graduation	48.4%	60.0%	61.8%	52.2%	53.3%	62.5%	70.6%	57.8%	51.2%	58.3%	63.2%					
URM	12	30	15	26	25	25	27	32	29	27	34	30	23	11	34	30
URM 1 Year Retention	66.7%	83.3%	86.7%	76.9%	84.0%	84.0%	81.5%	68.8%	86.2%	88.9%	82.4%	96.7%	69.6%	63.6%	91.2%	76.7%
URM 6 Year Graduation	25.0%	50.0%	46.7%	26.9%	52.0%	48.0%	63.0%	50.0%	51.7%	63.0%	64.7%					

- Based on Athlete identifier in first fall term
- These students are also counted in their respective entering college.

Oregon State University
Retention and Graduation Rates for Cohorts: Fall 2006 to Fall 2021
University Rates for Cohorts*

Year	Cohort	1 Yr Retained	2 Yr Retained	2 Yr Graduated	3 Yr Retained	3 Yr Graduated	4 Yr Retained	4 Yr Graduated	5 Yr Retained	5 Yr Graduated	6 Yr Retained	6 Yr Graduated
2006	2782	2263 81.3%	2012 72.3%	0 0.0%	1867 67.1%	31 1.1%	984 35.4%	814 29.3%	294 10.6%	1500 53.9%	117 4.2%	1680 60.4%
2007	2972	2401 80.8%	2142 72.1%	3 0.1%	2036 68.5%	42 1.4%	1065 35.8%	878 29.5%	276 9.3%	1647 55.4%	92 3.1%	1826 61.4%
2008	3003	2483 82.7%	2214 73.7%	3 0.1%	2076 69.1%	50 1.7%	1081 36.0%	922 30.7%	331 11.0%	1685 56.1%	102 3.4%	1896 63.1%
2009	3314	2753 83.1%	2483 74.9%	4 0.1%	2319 70.0%	50 1.5%	1163 35.1%	1072 32.3%	305 9.2%	1925 58.1%	92 2.8%	2130 64.3%
2010	3480	2834 81.4%	2569 73.8%	4 0.1%	2410 69.3%	43 1.2%	1154 33.2%	1145 32.9%	312 9.0%	1995 57.3%	104 3.0%	2204 63.3%
2011	3335	2777 83.3%	2528 75.8%	2 0.1%	2341 70.2%	67 2.0%	1147 34.4%	1110 33.3%	305 9.1%	1975 59.2%	122 3.7%	2179 65.3%
2012	3321	2796 84.2%	2558 77.0%	3 0.1%	2401 72.3%	66 2.0%	1095 33.0%	1223 36.8%	317 9.5%	2029 61.1%	132 4.0%	2226 67.0%
2013	3553	2976 83.8%	2701 76.0%	7 0.2%	2495 70.2%	79 2.2%	1228 34.6%	1238 34.8%	313 8.8%	2149 60.5%	102 2.9%	2384 67.1%
2014	3449	2926 84.8%	2703 78.4%	4 0.1%	2537 73.6%	82 2.4%	1071 31.1%	1403 40.7%	273 7.9%	2198 63.7%	88 2.6%	2391 69.3%
2015	3338	2783 83.4%	2574 77.1%	1 0.0%	2378 71.2%	88 2.6%	1013 30.3%	1355 40.6%	250 7.5%	2125 63.7%	95 2.8%	2276 68.2%
2016	3521	2989 84.9%	2742 77.9%	6 0.2%	2539 72.1%	112 3.2%	937 26.6%	1631 46.3%	236 6.7%	2334 66.3%	104 3.0%	2466 70.0%
2017	3421	2879 84.2%	2684 78.5%	5 0.1%	2461 71.9%	122 3.6%	910 26.6%	1608 47.0%	216 6.3%	2281 66.7%		
2018	3341	2853 85.4%	2644 79.1%	9 0.3%	2416 72.3%	153 4.6%	867 26.0%	1573 47.1%				
2019	3042	2572 84.5%	2410 79.2%	18 0.6%	2135 70.2%	136 4.5%						
2020	3125	2711 86.8%	2490 79.7%	12 0.4%								
2021	3603	3126 86.8%										

Cohort: first-time college, full-time degree seeking undergraduates admitted for fall term or preceding summer term.

First-time: never matriculated as degree-seeking students at another college or university.

Full-time: enrolled in 12 or more credit hours in first fall term.

Retained: enrolled in a subsequent fall term but not yet graduated.

Graduated: received first bachelor's degree by the summer before the given following fall term.

Example, 6 year graduation counts degrees earned up to the summer before the seventh fall term.