

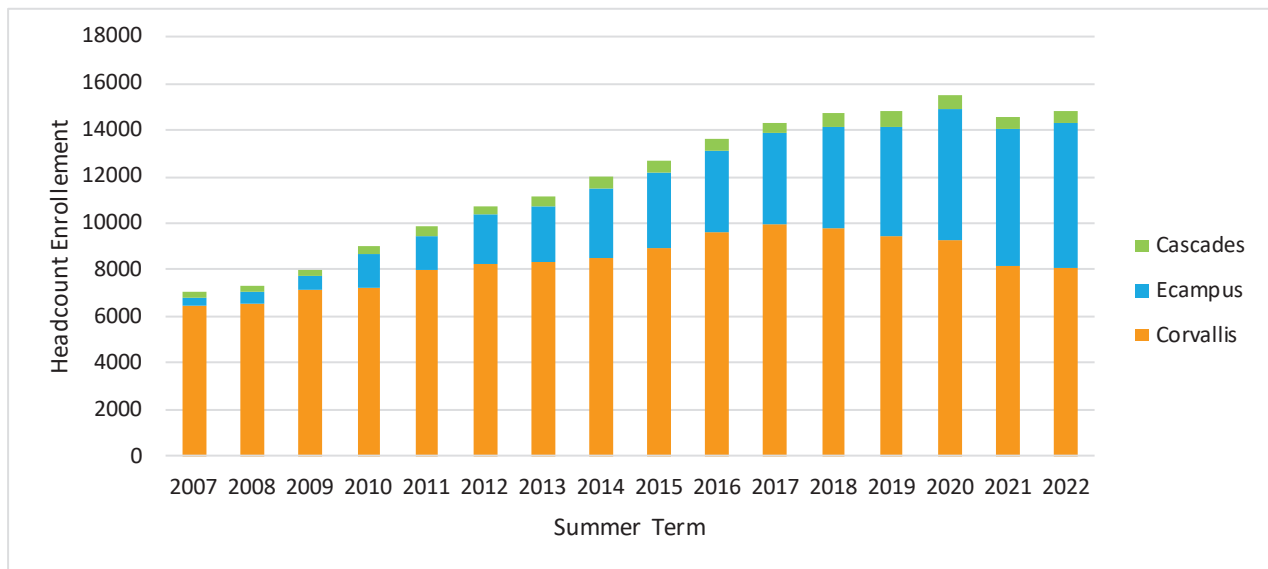
# Enrollment Summary — Summer Term 2022

Office of Institutional Research <http://institutionalresearch.oregonstate.edu/>

## TOTAL OSU ENROLLMENT

2012	2017	2021	2022	10 yr % chg	5 yr % chg	1 yr % chg
10752	14328	14630	<b>14899</b>	38.6%	4.0%	1.8%

Headcount Enrollment: Main (two largest components)\* and Cascades



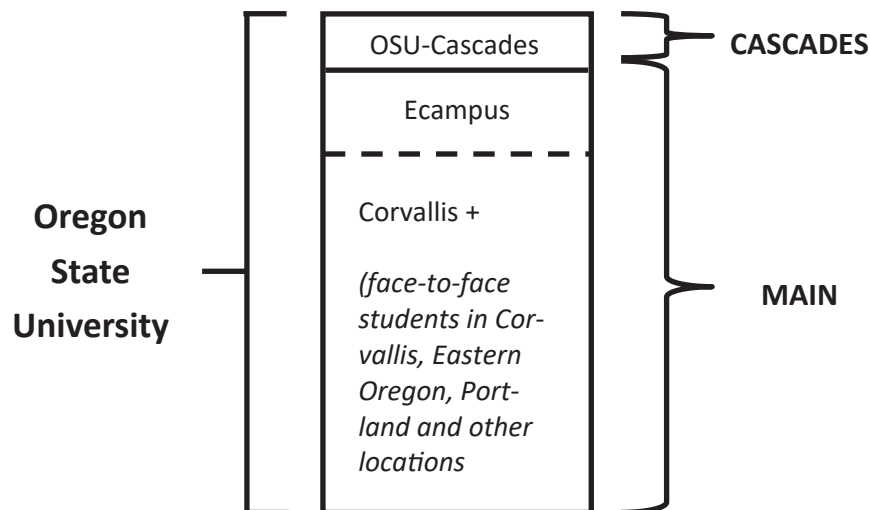
\*Main enrollment headcounts shown are student primary campus of Corvallis or Ecampus. It does not include smaller locations such as Portland or Eastern Oregon University

## Two Reporting Campuses for Oregon State University

- **MAIN**
- **CASCADES**

Historically, OSU has been funded by the state as a single entity. When the OSU-Cascades campus was established in 2001, the state funded it as a separate line item. This required reporting OSU-Cascades enrollments separately from all other enrollments, both to the state and to the federal IPEDS data system.

### OSU Reporting Campus Breakdown



We don't typically report total Oregon State University numbers. "Main" is usually quoted when giving OSU numbers. We do not use "OSU-Corvallis" in standard enrollment reporting.

Headcounts are based on student course registration, not student primary campus. OSU-Cascades students also taking Ecampus courses appear in counts for both Main and Cascades. For this reason, OSU's total enrollment cannot be calculated by adding Main and Cascades headcounts.

### Student Credit Load Terms

Undergraduates making full-time progress towards their bachelor's degree typically take 15 credits per term. We break up total credits in segments of this amount to indicate counts of full-time equivalents. For undergraduates, 15 credits = 1.0 FTE. For master's and professional doctorates, 12 credits = 1.0 FTE. For doctoral students, 9 credits = 1.0 FTE.

Full-time status is a characteristic of individual student credit load. A minimum value indicates whether the student credit load meets university and financial aid requirements for full-time enrollment. Undergraduates are considered "full-time" if they are enrolled in 12 or more credits.

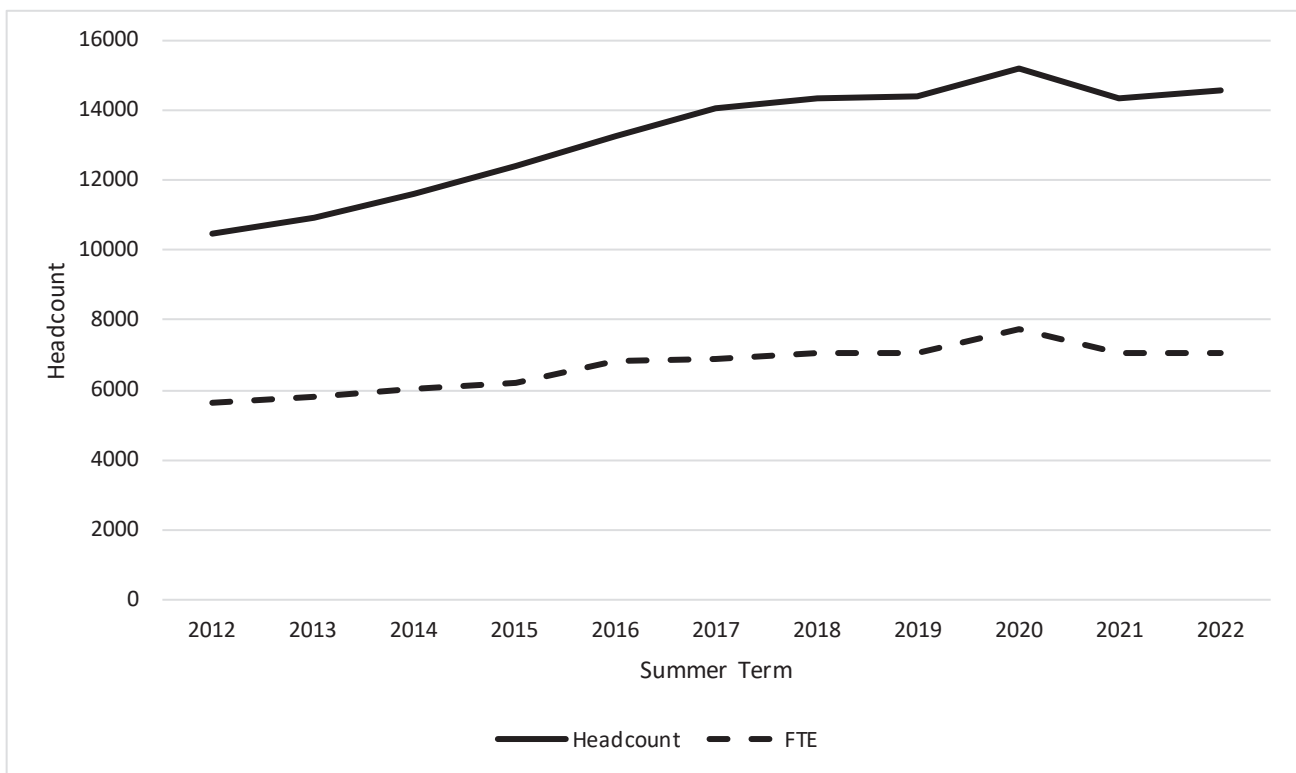
# MAIN CAMPUS ENROLLMENT

## Enrollment at-a-Glance

	<u>2021</u>	<u>2022</u>	<u>Change</u>	<u>% Change</u>
<b>Headcount</b>	14352	<b>14611</b>	259	1.8%
<b>Student FTE*</b>	7067.4	<b>7036.5</b>	-30.8	-0.4%
<b>Student Credit Hours*</b>	99901	<b>99887</b>	-14	0.0%

\*Based on active registrations on the census date. Headcount includes students enrolled after the first day of instruction.

### Summer Census 10 Year Trend: Main Campus Headcount and FTE



- ***OSU Headcount enrollment has grown continuously since 1996***
- ***Main Campus FTE flattening out as on-line students become larger proportion of enrollments; on-line students tend to take fewer credits***
- ***Tuition revenue and state apportionment are proportional to FTE not headcount***

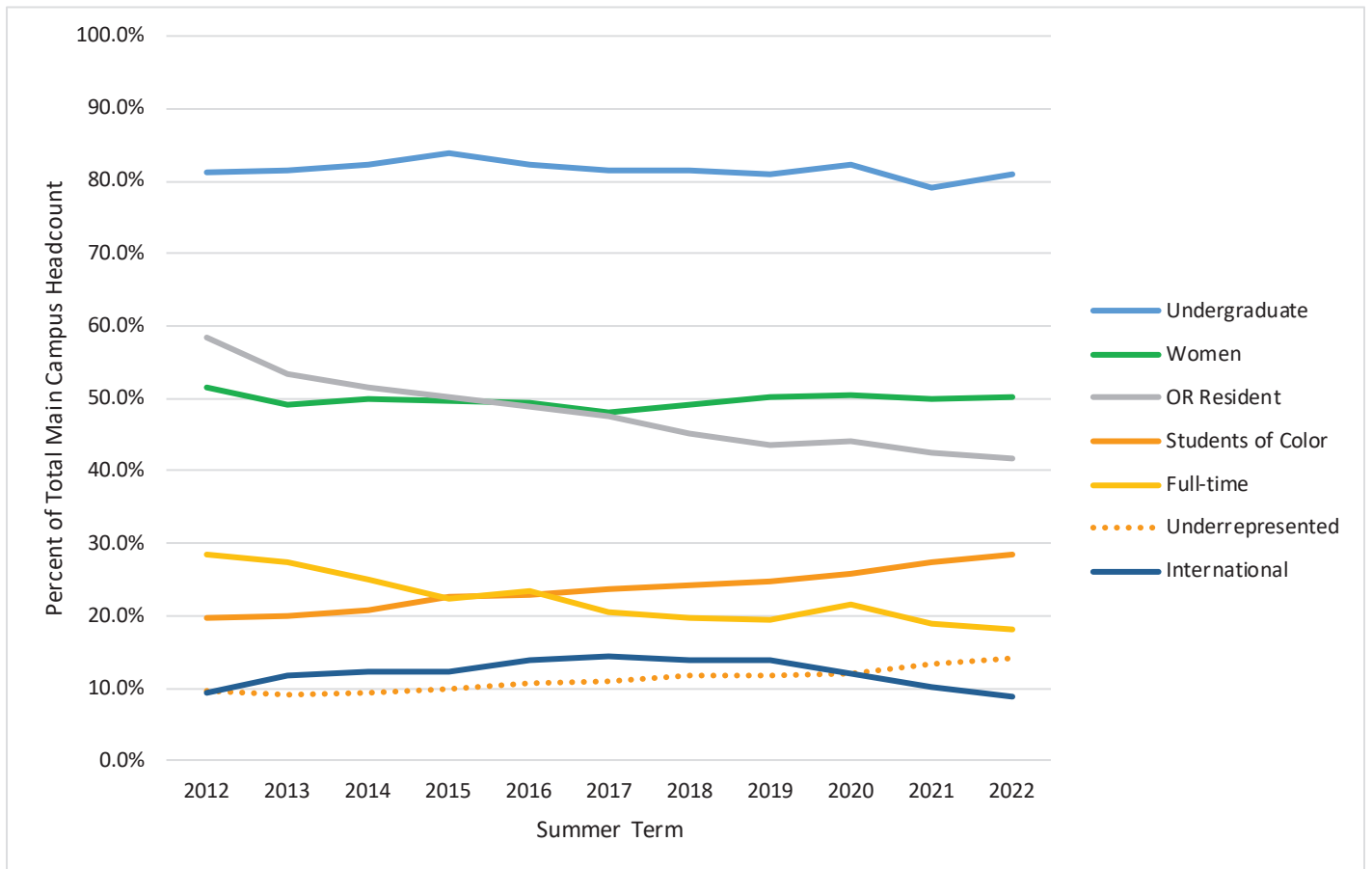
**Headcount Demographics**

	2021		2022		Change	
	Headcount	Percent	Headcount	Percent	Net Change	Percent Change
<b>Undergraduate</b>	11334	79.0%	<b>11838</b>	<b>81.0%</b>	504	4.4%
Degree Seeking	8863		<b>9272</b>		409	4.6%
2nd Degree (post bac)	1926		<b>1950</b>		24	1.2%
Non Degree	545		<b>616</b>		71	13.0%
<b>Graduate</b>	2839	19.8%	<b>2615</b>	<b>17.9%</b>	-224	-7.9%
Masters only	1132		<b>1153</b>		21	1.9%
Doctoral	1029		<b>966</b>		-63	-6.1%
Non Degree	678		<b>496</b>		-182	-26.8%
<b>Professional Doctorate*</b>	179	1.2%	<b>158</b>	<b>1.1%</b>	-21	-11.7%
*Doctoral are PhD/EdD; Professional doctorates are PharmD, DVM, and DPT						
<b>Full-time</b>	2724	19.0%	<b>2649</b>	<b>18.1%</b>	-75	-2.8%
<b>Part-time</b>	11628	81.0%	<b>11962</b>	<b>81.9%</b>	334	2.9%
<b>Oregon Resident</b>	6100	42.5%	<b>6089</b>	<b>41.7%</b>	-11	-0.2%
<b>Non Resident</b>	8252	57.5%	<b>8522</b>	<b>58.3%</b>	270	3.3%
<b>Women</b>	7180	50.0%	<b>7333</b>	<b>50.2%</b>	153	2.1%
<b>Men</b>	7172	50.0%	<b>7164</b>	<b>49.0%</b>	-8	-0.1%
<b>Unreported Sex</b>	n/a	n/a	<b>114</b>	<b>0.8%</b>	114	n/a
<b>Students of Color**</b>	3923	27.3%	<b>4150</b>	<b>28.4%</b>	227	5.8%
<b>Underrepresented Students</b>	1929	13.4%	<b>2064</b>	<b>14.1%</b>	135	7.0%
**Students of Color includes Asian and Multiracial but excludes International. Underrepresented students are ethnic groups that attend college at lower rates than their proportion of the US population (Black, American Indian/Alaska Native, Hispanic, Native Hawaiian/Pacific Islander)						
<b>International</b>	1467	10.2%	<b>1303</b>	<b>8.9%</b>	-164	-11.2%
<b>First Generation College</b>	2462		<b>2846</b>		384	15.6%
<b>% of Undergraduates</b>	21.7%		<b>24.0%</b>			

**VETERANS**

<b>Total</b>	817	5.7%	<b>894</b>	<b>6.1%</b>	77	9.4%
<b>Undergraduate</b>	714		<b>789</b>		75	10.5%
<b>% of Undergraduates</b>	6.3%		<b>6.7%</b>			
<b>Graduate/Prof Doctorate</b>	103		<b>105</b>		2	1.9%
<b>% of Graduate/Prof Doctorate</b>	3.4%		<b>3.8%</b>			

**10 Year Trend: Demographic Percentage of Total Main Campus**

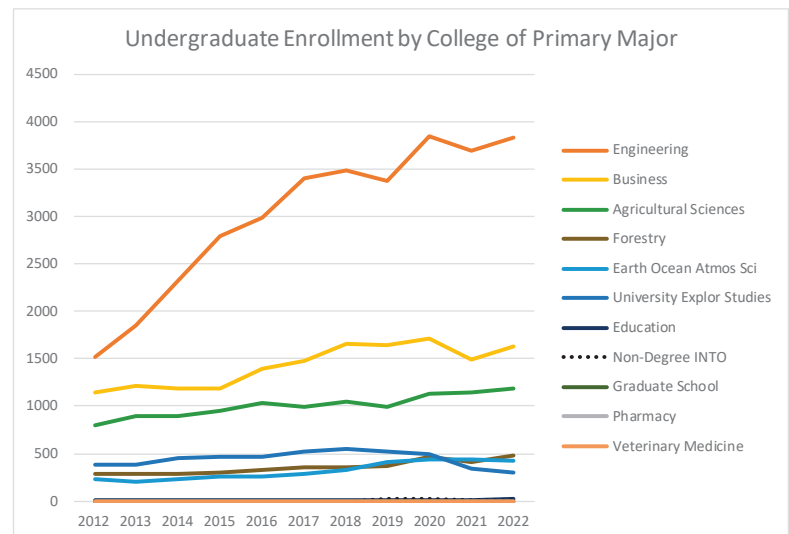
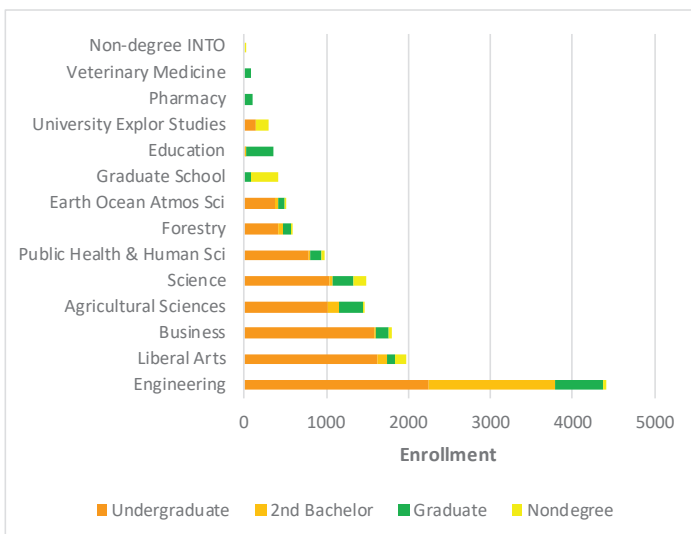


- ***Undergraduate Enrollment proportion grew slightly, bucking a longer term slight decline***
- ***A drop in Oregon Resident percent primarily reflect the growth of our nationally ranked on-line program (Ecampus)***
- ***OSU is slightly different from national rates where women are typically the majority of college enrollments; this may reflect OSU's STEM majors which tend to have fewer women***
- ***Percent of Students of Color and Underrepresented Students of Color has grown steadily, reflecting a corresponding growth among Oregon K-12 students***
- ***Recent drops in international students reflects travel restrictions posed by both the previous federal administration and the global COVID crisis. But numbers remain strong***

**College and Major Enrollments**
**College/General Academic Unit Enrollment by Student Level\***

COLLEGE	DEGREE SEEKING			CERTIFICATE		NONDEGREE	Total
	Undergraduate	2 <sup>nd</sup> Bachelor	Graduate	Undergraduate	Graduate	Nondegree	
Agricultural Sciences	1021	139	279	2	56	19	1516
Business	1583	16	153	1	6	52	1811
Earth Ocean Atmos Sci	380	38	74	0	9	1	502
Education	12	5	336	0	49	0	402
Engineering	2251	1534	578	1	2	47	4413
Forestry	421	48	104	0	8	6	587
Liberal Arts	1632	110	86	1	2	149	1980
Pharmacy	0	0	106	0	0	0	106
Public Health & Human Sci	782	24	135	0	1	34	976
Science	1045	36	249	0	0	158	1488
Veterinary Medicine	0	0	92	0	0	0	92
University Explor Studies	140	0	0	0	0	158	298
Graduate School	0	0	85	0	4	338	427
Non-degree INTO	0	0	0	0	0	13	13
<b>TOTAL 2022</b>	<b>9267</b>	<b>1950</b>	<b>2277</b>	<b>5</b>	<b>137</b>	<b>975</b>	<b>14611</b>
Total 2021	8860	1925	2340	4	153	1070	14352

\*College is based on a student's primary major. 2nd Bachelor refers to students who already have a bachelor's degree and are seeking another one (also called post baccalaureate).



**Primary College Enrollment by Sex-Binary and Student Level**

COLLEGE	UNDERGRADUATE					GRADUATE/PROFESSIONAL DOCTORATE				
	Female	Male	Unreported Sex	Total	% Female	Female	Male	Unreported Sex	Total	% Female
Agricultural Sciences	765	405	11	1170	65.4%	195	140	0	335	58.2%
Business	754	869	13	1623	46.5%	87	87	1	174	50.0%
Earth Ocean Atmos Sci	246	168	5	414	59.4%	55	28	0	83	66.3%
Education	15	2	0	17	88.2%	289	92	4	381	75.9%
Engineering	946	2856	28	3802	24.9%	171	409	3	580	29.5%
Forestry	238	236	1	474	50.2%	66	45	1	111	59.5%
Liberal Arts	1209	660	23	1869	64.7%	67	21	0	88	76.1%
Pharmacy	-	-	-	-	n/a	60	46	0	106	56.6%
Public Health & Human Sci	621	216	2	837	74.2%	86	51	0	137	62.8%
Science	849	385	4	1234	68.8%	108	142	0	250	43.2%
Veterinary Medicine	-	-	-	-	n/a	79	13	0	92	85.9%
University Explor Studies	148	143	7	291	50.9%	-	-	-	-	n/a
Graduate School	-	-	-	-	n/a	270	146	11	416	64.9%
Non-degree INTO	9	4	0	13	69.2%	-	-	-	-	n/a
<b>TOTAL 2022</b>	<b>5800</b>	<b>5944</b>	<b>94</b>	<b>11838</b>	<b>49.0%</b>	<b>1533</b>	<b>1220</b>	<b>20</b>	<b>2773</b>	<b>55.3%</b>
Total 2021	5536	5798	0	11334	79.0%	1644	1374	0	3018	54.5%

**Enrollment in Secondary and Double Degree by College of Major**

Most reporting by college is based on a student's primary major. However, students may have more than one major. The table below indicates enrollments in secondary majors. Double Degrees are majors which may only be taken as secondary majors.

COLLEGE	Secondary Majors	Double Degree
Agricultural Sciences	75	Sustainability 109
Business	109	Innovation Management 4
Earth Ocean Atmos Sci	135	-
Education	59	Education, Pre-Education 62
Engineering	66	-
Forestry	34	-
Liberal Arts	181	International Studies 2
Pharmacy	1	-
Public Health & Human Sci	17	-
Science	50	-
Veterinary Medicine	3	-
Graduate School	33	-
<b>TOTAL 2022</b>	<b>763</b>	<b>177</b>
Total 2021	771	206

**Student Enrollment by College/General Academic Unit**
**Student Class Standing**

College	Fresh- man	Sopho- more	Junior	Senior	Post Bac	Stand- alone Undergrad Cert	Non- Degree Under- grad	Under- grad Total	Master	Doctor- ate	Non- Degree Grad	Grad Total	Profes- sional Doctorate	TOTAL
Ag. Sciences	66	125	237	593	139	2	19	1181	148	131	56	335	-	1516
Business	122	295	460	706	16	1	36	1636	152	1	22	175	-	1811
Earth, Ocean, and Atmos Sci	23	52	96	209	38	-	1	419	25	49	9	83	-	502
Education	-	4	3	5	5	-	-	17	231	105	49	385	-	402
Engineering	157	383	586	1125	1534	1	44	3830	277	301	5	583	-	4413
Forestry	18	37	114	252	48	-	6	475	84	20	8	112	-	587
Liberal Arts	78	214	499	841	110	1	149	1892	65	21	2	88	-	1980
Pharmacy	-	-	-	-	-	-	-	0	0	24	-	24	82	106
Public Health and Human Sci	38	95	191	458	24	-	33	839	78	57	2	137	-	976
Science	72	177	246	550	36	-	157	1238	21	228	1	250	-	1488
Veterinary Medicine	-	-	-	-	-	-	-	0	8	8	-	16	76	92
Graduate School	-	-	-	-	-	-	-	0	64	21	342	427	-	427
Univ. Explor. Studies	55	44	20	21	-	-	158	298	-	-	-	-	-	298
Non-Degree INTO	-	-	-	-	-	-	13	13	-	-	-	-	-	13
<b>TOTAL 2022</b>	<b>629</b>	<b>1426</b>	<b>2452</b>	<b>4760</b>	<b>1950</b>	<b>5</b>	<b>616</b>	<b>11838</b>	<b>1153</b>	<b>966</b>	<b>496</b>	<b>2615</b>	<b>158</b>	<b>14611</b>
Total 2021	516	1168	2434	4742	1925	4	545	11334	1132	1029	678	2839	179	14352



**Enrollment by Major**

In this table we count each major for students with multiple or double degrees. This results in duplicated headcounts across college and university totals.

ACADEMIC UNIT	UNDER-GRAD	GRAD	TOTAL	ACADEMIC UNIT	UNDER-GRAD	GRAD	TOTAL
<b><u>College of Agricultural Sciences</u></b>				<b><u>College of Business (Cont.)</u></b>			
Agricultural and Food Business Management	14	-	14	Pre-MSB	-	15	15
Agricultural Business Management	5	-	5	Business Analytics	59	2	61
Agricultural Education	-	7	7	Business Fundamentals	-	4	4
Agricultural Sciences <sup>1</sup>	114	1	115	Business Information Systems	94	-	94
Animal Science	-	7	7	Design and Innovation Management	76	-	76
Animal Sciences	122	-	122	Finance	205	-	205
Applied Economics	-	11	11	Hospitality Management	4	-	4
Biological Data Sciences	7	-	7	Innovation Management	4	-	4
Bioresource Research	23	-	23	Interior Design	23	-	23
Botany	153	-	153	Pre-Interiors	11	-	11
Botany and Plant Pathology	-	35	35	Management	122	-	122
Crop and Soil Science	25	-	25	Marketing	224	-	224
Crop Science	-	17	17	Merchandising Management	39	-	39
Environmental Economics and Policy	40	-	40	Organizational Leadership	1	-	1
Fisheries and Wildlife Administration	-	18	18	Supply Chain and Logistics Management	16	-	16
Fisheries and Wildlife Sciences	401	-	401	Sustainability	23	-	23
Fisheries Management	-	27	27	Non-Degree Business	25	-	25
Fisheries Science	-	30	30	<b>TOTAL</b>	<b>1791</b>	<b>196</b>	<b>1987</b>
Fisheries, Wildlife, and Conservation Sciences	49	-	49	<b><u>College of Earth, Ocean, and Atmospheric Sciences</u></b>			
Food Science and Sustainable Technologies	10	-	10	Climate Science	14	-	14
Food Science and Technology	37	32	69	Earth Sciences	24	-	24
Horticulture	151	41	192	Environmental Sciences	301	-	301
Leading and Creating Change	-	1	1	Geographic Information Science	106	19	125
Organic Agriculture	-	1	1	Geography	-	12	12
Organic Farming Systems	3	-	3	Geography and Geospatial Science	56	-	56
Rangeland Ecology and Management	-	3	3	Geology	22	15	37
Rangeland Sciences	25	-	25	Marine Resource Management	-	9	9
Soil Science	-	12	12	Ocean, Earth and Atmospheric Sciences	-	38	38
Sustainability	35	-	35	Oceanography	12	-	12
Toxicology	-	18	18	Sustainability	4	-	4
Urban Agriculture	6	-	6	Water Conflict Management and Transformation	-	8	8
Wildlife Management <sup>2</sup>	-	50	50	<b>TOTAL</b>	<b>539</b>	<b>101</b>	<b>640</b>
Wildlife Science	-	48	48	<b><u>College of Education</u></b>			
Non-Degree Agricultural Sciences	18	1	19	Adult and Higher Education	-	54	54
<b>TOTAL</b>	<b>1238</b>	<b>360</b>	<b>1598</b>	Counseling	-	196	196
<b><u>College of Business</u></b>				Dual Language Specialization	-	16	16
Accountancy	132	-	132	Education	5	43	48
Apparel Design	25	-	25	Pre-Education	57	-	57
Pre-Apparel	8	-	8	English for Speakers of Other Languages	-	27	27
Business	-	26	26	Instructional Design	-	6	6
Business Administration	700	148	848	Teaching	6	44	50
Pre-MBA	-	1	1	Pre-Teaching	7	-	7
				<b>TOTAL</b>	<b>75</b>	<b>386</b>	<b>461</b>

ACADEMIC UNIT	UNDER-GRAD	GRAD	TOTAL	ACADEMIC UNIT	UNDER-GRAD	GRAD	TOTAL
<b><u>College of Engineering</u></b>				<b><u>Graduate School</u></b>			
Architectural Engineering	44	-	44	College and University Teaching	-	37	37
Artificial Intelligence	-	10	10	Environmental Sciences	-	60	60
Bioengineering	102	10	112	Interdisciplinary Studies	-	1	1
Biological and Ecological Engineering	-	5	5	Water Resources Engineering	-	5	5
Chemical Engineering	149	32	181	Water Resources Policy and Management	-	7	7
Civil Engineering	106	91	197	Water Resources Science	-	12	12
Computer Science	2391	122	2513	Non-Degree Graduate Student	-	338	338
Construction Engineering Management	112	-	112	<b>TOTAL</b>	<b>-</b>	<b>460</b>	<b>460</b>
CyberSecurity	19	-	19				
Ecological Engineering	36	-	36	<b><u>College of Liberal Arts</u></b>			
Electrical and Computer Engineering	225	52	277	American Studies	5	-	5
Energy Systems Engineering	25	-	25	Anthropology	128	-	128
Engineering Management	-	8	8	Applied Anthropology	-	4	4
Engineering Science	8	-	8	Applied Ethics	-	2	2
Environmental Engineering	44	12	56	Applied Visual Arts	2	-	2
General Engineering	8	-	8	Art	51	-	51
Pre-General Engineering	1	-	1	Arts, Media, and Technology	8	-	8
Industrial Engineering	53	39	92	College Student Services Administration	-	15	15
Manufacturing Engineering	64	-	64	Creative Writing	23	2	25
Materials Science	-	16	16	Digital Communication Arts	120	-	120
Mechanical Engineering	440	65	505	Economics	133	-	133
Mechatronics for Manufacturing Engineering	1	-	1	Energy Policy	-	7	7
Nuclear Engineering	42	26	68	English	37	2	39
Outdoor Products	8	-	8	Environmental Arts and Humanities	-	3	3
Radiation Health Physics	11	59	70	Ethnic Studies	2	-	2
Robotics	-	57	57	Food in Culture and Social Justice	2	-	2
Sustainability	8	-	8	French	44	-	44
Non-Degree Pre-Engineering	37	-	37	German	33	-	33
<b>TOTAL</b>	<b>3934</b>	<b>604</b>	<b>4538</b>	Global Learning	1	-	1
				Graphic Design	26	-	26
<b><u>College of Forestry</u></b>				Pre-Graphic Design	6	-	6
Forest Ecosystems and Society	-	11	11	History	115	2	117
Forest Engineering	5	-	5	International Studies	2	-	2
Pre-Forest/Civil Engineering	6	-	6	Liberal Studies	78	-	78
Pre-Forest Engineering	4	-	4	Marine Studies	8	-	8
Forestry	15	-	15	Medical Humanities <sup>1</sup>	56	-	56
Pre-Forestry	34	-	34	Music	27	-	27
Forests and Climate Change	-	9	9	Music Studies	12	-	12
Natural Resources	366	64	430	Peace Studies	1	-	1
Renewable Materials	11	-	11	Philosophy	29	-	29
Sustainability	20	-	20	Political Science	103	-	103
Sustainable Forest Management	-	21	21	Psychology	602	8	610
Sustainable Natural Resources	-	6	6				
Tourism, Recreation, and Adventure Leadership	32	-	32				
Urban Forestry	-	2	2				
Wood Science	-	11	11				
Non-Degree Forestry	5	-	5				
<b>TOTAL</b>	<b>498</b>	<b>124</b>	<b>622</b>				

ACADEMIC UNIT	UNDER-GRAD	GRAD	PROF DOCT	TOTAL
<b><u>College of Liberal Arts (Cont.)</u></b>				
Public Policy	18	44	-	62
Religious Studies	11	-	-	11
Scientific, Technical, and Professional Communication	2	-	-	2
Social Science	11	-	-	11
Sociology	123	-	-	123
Spanish	55	-	-	55
Speech Communication <sup>1</sup>	38	-	-	38
Pre-Communication	6	-	-	6
Sustainability	12	-	-	12
Theatre Arts	4	-	-	4
Women, Gender, and Sexuality Studies	30	6	-	36
Yoga Studies and Yoga				
Teacher Training	1	-	-	1
Non-Degree Liberal Arts	149	1	-	150
<b>TOTAL</b>	<b>2114</b>	<b>96</b>	<b>-</b>	<b>2210</b>

<b><u>College of Pharmacy</u></b>				
Pharmaceutical Sciences	-	24	1	25
Pharmacy, Doctor of Pharmacy (4-year)	-	-	82	82
<b>TOTAL</b>	<b>-</b>	<b>24</b>	<b>83</b>	<b>107</b>

<b><u>College of Public Health and Human Sciences</u></b>				
Adapted Physical Education	-	12	-	12
Athletic Training	-	28	-	28
Gerontology	1	-	-	1
Human Development and Family Sciences	217	-	-	217
Human Development and Family Studies	-	9	-	9
Kinesiology	367	19	-	386
Nutrition	71	8	-	79
Public Health	172	63	-	235
Sustainability	2	-	-	2
Non-Degree Public Health and Human Sciences	30	-	-	30
<b>TOTAL</b>	<b>860</b>	<b>139</b>	<b>-</b>	<b>999</b>

<b><u>College of Science</u></b>				
Biochemistry and Biophysics	27	21	-	48
Biochemistry and Molecular Biology	79	-	-	79
BioHealth Sciences	260	-	-	260
Biology	259	-	-	259
Chemistry	51	80	-	131
Data Analytics	-	5	-	5
General Science	1	-	-	1
Integrative Biology	-	46	-	46
Mathematics	84	31	-	115
Microbiology	48	28	-	76
Physics	49	37	-	86
Statistics	-	7	-	7
Sustainability	4	-	-	4
Zoology <sup>1</sup>	273	3	-	276
Non-Degree Science	150	-	-	150
<b>TOTAL</b>	<b>1285</b>	<b>258</b>	<b>-</b>	<b>1543</b>

ACADEMIC UNIT	UNDER-GRAD	GRAD	PROF DOCT	TOTAL
<b><u>College of Veterinary Medicine</u></b>				
Veterinary Medicine - DVM	-	-	76	76
Comparative Health Sciences	-	19	-	19
<b>TOTAL</b>	<b>-</b>	<b>19</b>	<b>76</b>	<b>95</b>

<b><u>University Exploratory Studies</u></b>				
University Exploratory Studies	298	-	-	298
<b>TOTAL</b>	<b>298</b>	<b>-</b>	<b>-</b>	<b>298</b>

<b><u>Non-Degree INTO</u></b>				
Graduate Pathway	-	21	-	21
Study Abroad with English Part 2	7	-	-	7
Transitional Admission Program	-	2	-	2
Undergraduate Pathway	21	-	-	21
Undergraduate Transfer Program	9	-	-	9
<b>TOTAL</b>	<b>37</b>	<b>23</b>	<b>-</b>	<b>60</b>

<b><u>Honors College</u></b>				
Honors Scholar and Honors Associate <sup>3</sup>	451	-	-	451
<b>TOTAL</b>	<b>451</b>	<b>-</b>	<b>-</b>	<b>451</b>

	UNDER-GRAD	GRAD	FIRST-PROF	TOTAL
<b>TOTAL UNIVERSITY</b>	<b>12669</b>	<b>2771</b>	<b>159</b>	<b>15618</b>

<sup>1</sup> Includes graduate/professional doctorate students also pursuing an undergraduate degree.

<sup>2</sup> Includes undergraduate post baccalaureate students also pursuing a graduate program/certificate.

<sup>3</sup> Honors Scholars and Honors Associates do not add to the University total because they have already been counted in their major.

### Degree Programs with the Highest Enrollment (Last Year's Rank)

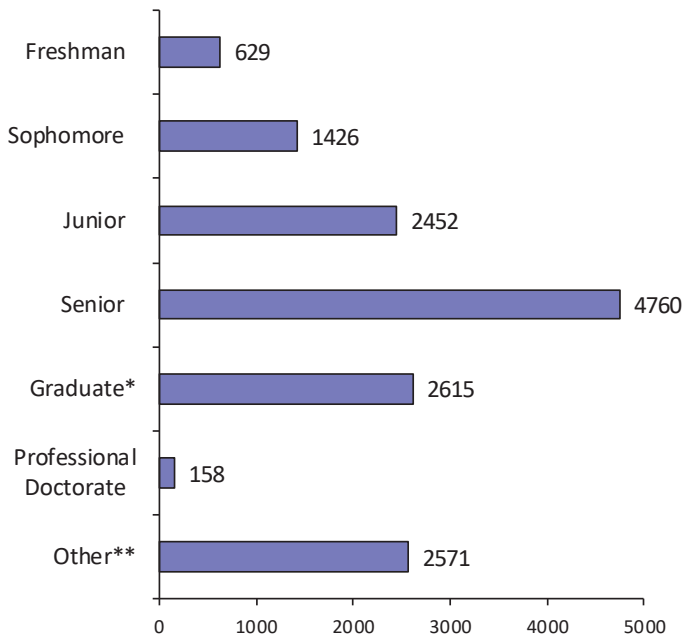
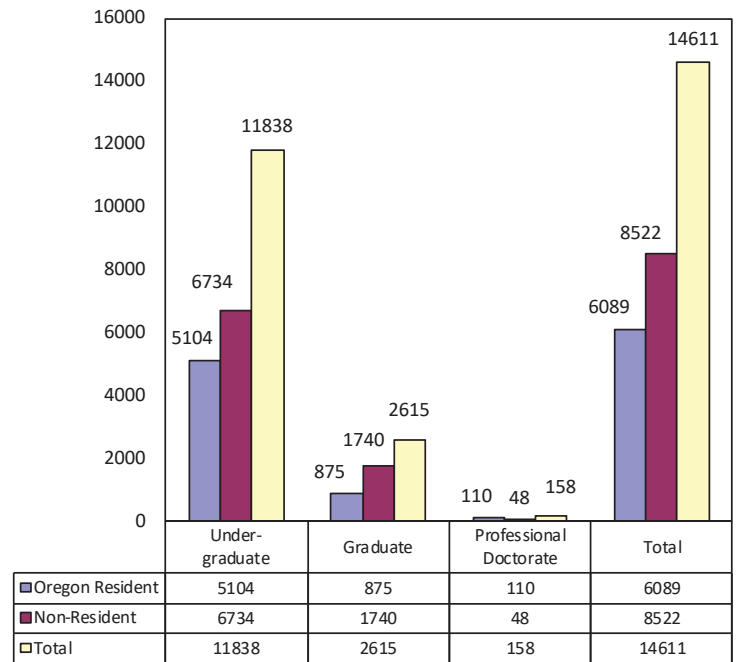
#### Undergraduate

1. Computer Science (1)	2391
2. Business Administration (2)	700
3. Psychology (3)	602
4. Mechanical Engineering (4)	440
5. Fisheries and Wildlife Sciences (5)	401
6. Kinesiology (6)	367
7. Natural Resources (7)	366
8. Environmental Sciences (8)	301
9. Zoology (13)	273
10. BioHealth Sciences (11)	260

#### Graduate / Professional Doctorate

1. Counseling (2)	196
2. Business Administration* (1)	164
3. Computer Science (3)	122
4. Civil Engineering (5)	91
5. Pharmacy, Doctor of Pharmacy (4-year) (4)	82
6. Chemistry (6)	80
7. Veterinary Medicine - DVM (9)	76
8. Mechanical Engineering (10)	65
9. Natural Resources (13)	64
10. Public Health (7)	63

\*Includes Pre-MBA and Pre-MSB

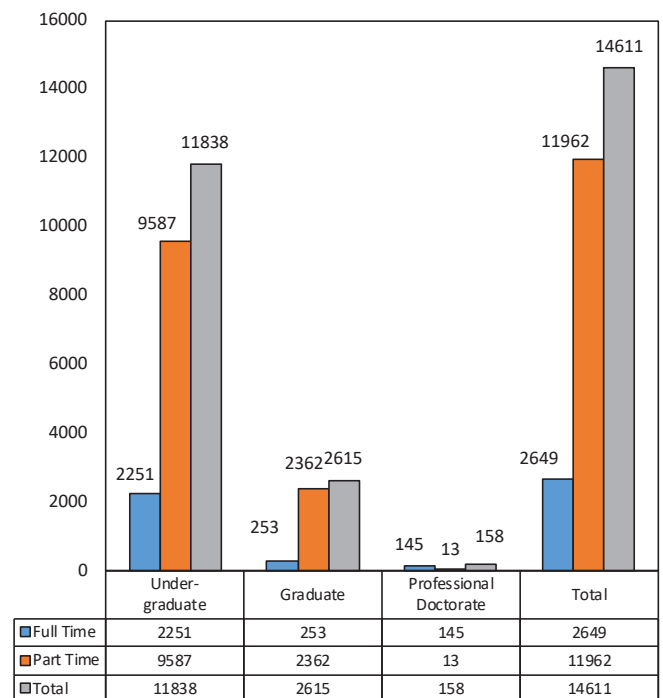
**Headcount Enrollment by Class Standing**

**Headcount By Residency\* and Student Level**


\*Includes Non-Degree Graduate Students.

\*\*Includes Non-Degree Undergraduate, Standalone Undergrad Certs, and Post-Baccalaureate Students

**Student Enrollment, Credit Hours, and FTE by Class Standing**

Class Standing	Student Enrollment	Student Credit Hours	Student FTE
Freshman	629	4043	269.5
Sophomore	1426	9946	663.1
Junior	2452	18952	1263.5
Senior	4760	37985	2532.3
Post Baccalaureate	1950	10929	728.6
Standalone Undergrad Cert	5	22	1.5
Non-Degree Undergrad	616	3100	206.7
<b>Total for Undergraduate</b>	<b>11838</b>	<b>84977</b>	<b>5665.1</b>
Masters	1153	5913	492.8
Doctoral	966	4641	515.7
Non-Degree Graduate	496	2218	184.8
<b>Total for Graduate</b>	<b>2615</b>	<b>12772</b>	<b>1193.2</b>
Doctor of Pharmacy	82	1197	99.7
Veterinary Medicine	76	941	78.4
<b>Total for Prof Doctorate</b>	<b>158</b>	<b>2138</b>	<b>178.2</b>
<b>GRAND TOTAL (Summer 2022)</b>	<b>14611</b>	<b>99887</b>	<b>7036.6</b>
(Summer 2021)	14352	99901	7067.4

**Headcount By Full/Part Time and Student Level**


**Enrollment by College/General Academic Unit, Ethnicity, and Student Level**

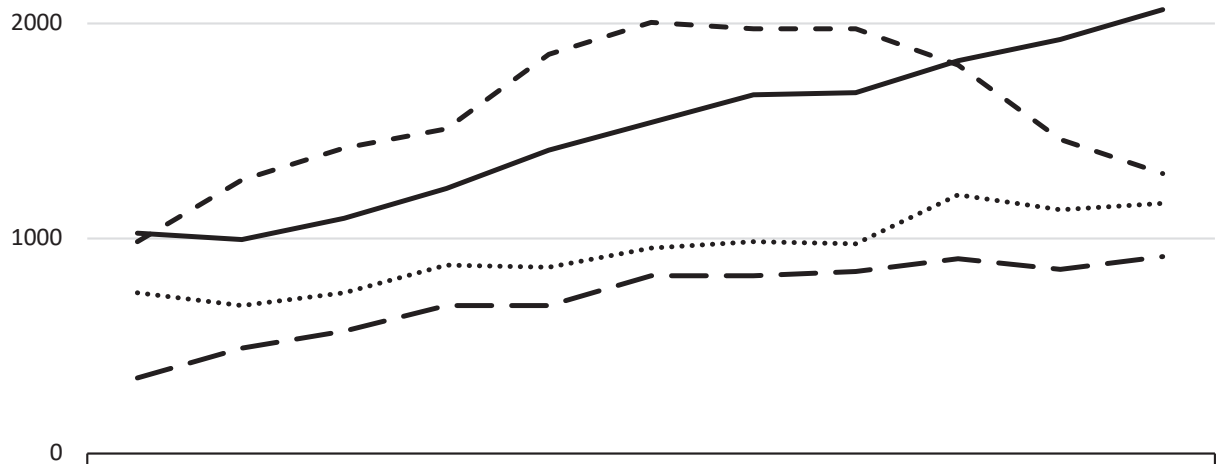
College	American Indian/ Alaska Native				Asian				Black				Hispanic				Native Hawaiian/ Pacific Islander			
	Under-Grad	Grad	Prof	Doct. Total	Under-Grad	Grad	Prof	Doct. Total	Under-Grad	Grad	Prof	Doct. Total	Under-Grad	Grad	Prof	Doct. Total	Under-Grad	Grad	Prof	Doct. Total
Ag. Sciences	9	1	-	10	35	11	-	46	10	4	-	14	127	28	-	155	1	-	-	1
Business	12	2	-	14	94	10	-	104	31	5	-	36	198	15	-	213	6	-	-	6
Earth, Ocean, and Atmos. Sci	2	-	-	2	8	6	-	14	6	2	-	8	48	6	-	54	1	-	-	1
Education	-	2	-	2	-	21	-	21	-	11	-	11	3	88	-	91	-	-	-	-
Engineering	15	1	-	16	586	25	-	611	81	7	-	88	371	32	-	403	10	2	-	12
Forestry	5	-	-	5	10	1	-	11	5	4	-	9	36	6	-	42	2	-	-	2
Graduate School	-	1	-	1	-	19	-	19	-	12	-	12	-	45	-	45	-	2	-	2
Liberal Arts	11	1	-	12	78	3	-	81	57	-	-	57	243	12	-	255	11	-	-	11
Pharmacy	-	-	1	1	-	1	30	31	-	-	1	1	-	1	6	7	-	-	-	-
Public Health and Human Sci	3	-	-	3	62	4	-	66	18	3	-	21	137	20	-	157	2	-	-	2
Science	6	-	-	6	122	14	-	136	33	2	-	35	162	18	-	180	5	-	-	5
Univ. Explor. Studies	2	-	-	2	21	-	-	21	6	-	-	6	36	-	-	36	-	-	-	-
Vet. Medicine	-	-	-	-	-	-	8	8	-	-	1	1	-	-	10	10	-	-	1	1
Non-Degree INTO	-	-	-	-	-	-	-	-	-	-	-	-	-	-	-	-	-	-	-	-
<b>Total</b>	<b>65</b>	<b>8</b>	<b>1</b>	<b>74</b>	<b>1016</b>	<b>115</b>	<b>38</b>	<b>1169</b>	<b>247</b>	<b>50</b>	<b>2</b>	<b>299</b>	<b>1361</b>	<b>271</b>	<b>16</b>	<b>1648</b>	<b>38</b>	<b>4</b>	<b>1</b>	<b>43</b>

College	Two or More Races				White				International*				Unknown				TOTAL			
	Under-Grad	Grad	Prof	Doct. Total	Under-Grad	Grad	Prof	Doct. Total	Under-Grad	Grad	Prof	Doct. Total	Under-Grad	Grad	Prof	Doct. Total	Under-Grad	Grad	Prof	Doct. Total
Ag. Sciences	74	14	-	88	866	228	-	1094	24	46	-	70	35	3	-	38	1181	335	-	1516
Business	106	9	-	115	956	94	-	1050	199	30	-	229	34	10	-	44	1636	175	-	1811
Earth, Ocean, and Atmos. Sci	30	7	-	37	306	52	-	358	6	9	-	15	12	1	-	13	419	83	-	502
Education	3	18	-	21	9	228	-	237	-	2	-	2	2	15	-	17	17	385	-	402
Engineering	249	14	-	263	1964	219	-	2183	338	265	-	603	216	18	-	234	3830	583	-	4413
Forestry	28	3	-	31	367	72	-	439	4	22	-	26	18	4	-	22	475	112	-	587
Graduate School	-	16	-	16	-	283	-	283	-	20	-	20	-	29	-	29	-	427	-	427
Liberal Arts	111	8	-	119	1216	50	-	1266	79	12	-	91	86	2	-	88	1892	88	-	1980
Pharmacy	-	1	4	5	-	11	38	49	-	9	1	10	-	1	1	2	-	24	82	106
Public Health and Human Sci	72	3	-	75	513	81	-	594	23	24	-	47	9	2	-	11	839	137	-	976
Science	108	10	-	118	731	141	-	872	52	58	-	110	19	7	-	26	1238	250	-	1488
Univ. Explor. Studies	17	-	-	17	144	-	-	144	62	-	-	62	10	-	-	10	298	-	-	298
Vet. Medicine	-	1	11	12	-	9	45	54	-	5	0	5	-	1	0	1	-	16	76	92
Non-Degree INTO	-	-	-	-	-	-	-	-	13	-	-	13	0	-	-	0	13	-	-	13
<b>Total</b>	<b>798</b>	<b>104</b>	<b>15</b>	<b>917</b>	<b>7072</b>	<b>1468</b>	<b>83</b>	<b>8623</b>	<b>800</b>	<b>502</b>	<b>1</b>	<b>1303</b>	<b>441</b>	<b>93</b>	<b>1</b>	<b>535</b>	<b>11838</b>	<b>2615</b>	<b>158</b>	<b>14611</b>

\*International students are identified by citizenship code. Students with unknown visa type are not included in International counts.

**Students of Color Enrollment Trend**

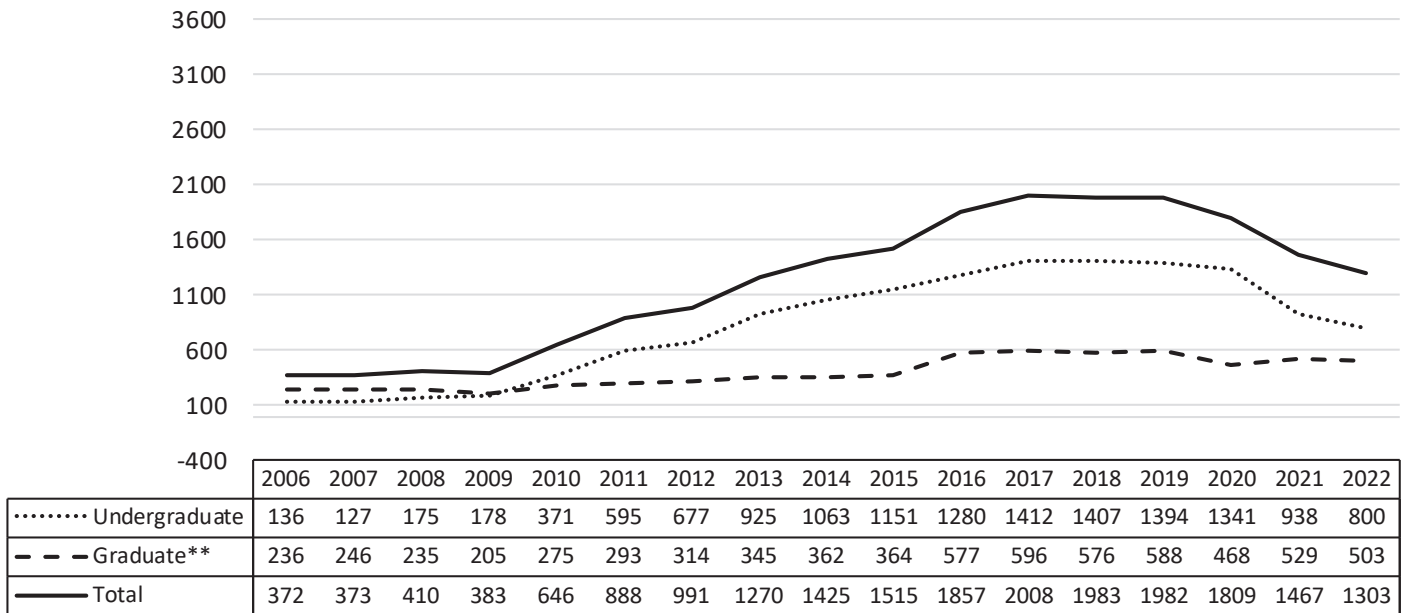
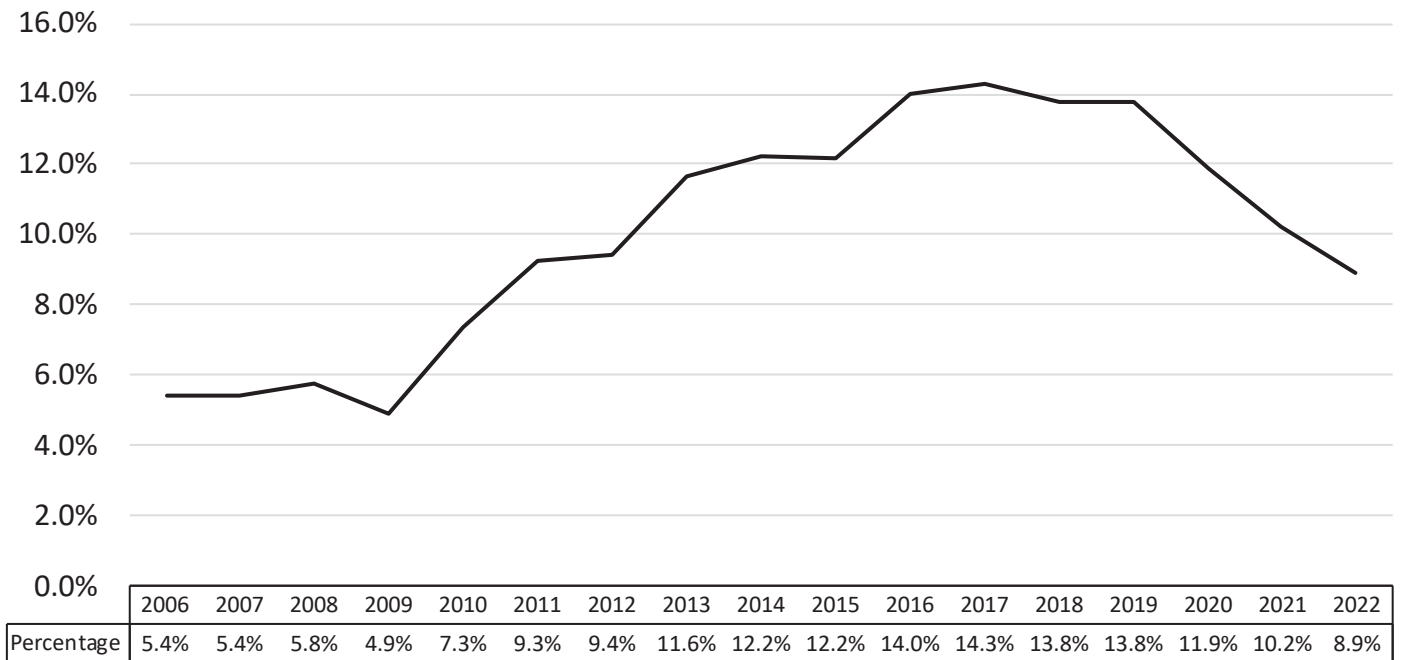
Summer Term	American Indian/ Alaska Native	Asian	Black	Hispanic	Native Hawaiian/ Pacific Islander	Two or More Races	TOTAL	One Year % change
2012	87	745	231	641	71	356	2131	19.5%
2013	76	684	220	640	58	491	2169	1.8%
2014	66	744	245	733	49	569	2406	10.9%
2015	79	882	244	866	49	685	2805	16.6%
2016	69	867	232	1062	49	685	2964	5.7%
2017	61	959	261	1170	49	827	3327	12.2%
2018	76	982	261	1296	41	826	3482	4.7%
2019	71	975	275	1290	41	847	3499	0.5%
2020	65	1202	260	1467	36	911	3941	12.6%
2021	62	1138	264	1578	25	856	3923	-0.5%
2022	74	1169	299	1648	43	917	4150	5.8%



	2012	2013	2014	2015	2016	2017	2018	2019	2020	2021	2022
— URM*	1030	994	1093	1238	1412	1541	1674	1677	1828	1929	2064
..... Asian	745	684	744	882	867	959	982	975	1202	1138	1169
- - Two or More Races	356	491	569	685	685	827	826	847	911	856	917
- · - International	991	1270	1425	1515	1857	2008	1983	1978	1809	1467	1303

\*URM includes American Indian/Alaskan Native, Black, Hispanic, and Native Hawaiian/Pacific Islander.



**International Enrollment**
**International\* Student Enrollment Summer Term 2006 to Summer Term 2022**

**International Student Percent of Total OSU Enrollment**


\*Fall 2005-2006, International students are identified by residency code. Fall 2007-2009, international students were identified by Admit Type code. Since Fall 2010, international students were identified by citizenship code. Students with unknown visa type are not included in International counts for Fall 2015-2020.

\*\* Includes Professional Doctorate Students.



**INTO Oregon State University**

	2021		2022		Change	
	Headcount	%	Headcount	%	Net Change	% Change
<b>INTO Students Included in OSU Headcount</b>						
Graduate Pathways	19	16.8%	21	20.2%	2	10.5%
OSU-Student-CAP	0	0.0%	1	1.0%	1	n/a
Study Abroad	1	0.9%	7	6.7%	6	600.0%
Undergraduate Pathways	45	39.8%	30	28.8%	-15	-33.3%
<b>INTO Students not in OSU Headcount</b>						
Academic English	48	42.5%	45	43.3%	-3	-6.3%
<b>Total INTO Program</b>	<b>113</b>	<b>100.0%</b>	<b>104</b>	<b>100.0%</b>	<b>-9</b>	<b>-8.0%</b>
<b>Women</b>	<b>32</b>	<b>28.3%</b>	<b>31</b>	<b>29.8%</b>	<b>-1</b>	<b>-3.1%</b>
<b>Men</b>	<b>81</b>	<b>71.7%</b>	<b>73</b>	<b>70.2%</b>	<b>-8</b>	<b>-9.9%</b>
<b>Unreported Sex</b>	<b>0</b>	<b>0.0%</b>	<b>0</b>	<b>0.0%</b>	<b>0</b>	<b>n/a</b>
<b>25 and Older</b>	<b>23</b>	<b>20.4%</b>	<b>32</b>	<b>30.8%</b>	<b>9</b>	<b>39.1%</b>
<b>Less than 25</b>	<b>90</b>	<b>79.6%</b>	<b>72</b>	<b>69.2%</b>	<b>-18</b>	<b>-20.0%</b>

**Enrollment by Country**

Country	Headcount	Percent
Burma	1	1.0%
Cambodia	1	1.0%
Chile	1	1.0%
China, Peoples Republic Of	15	14.4%
Indonesia	6	5.8%
Japan	11	10.6%
Kuwait	16	15.4%
Oman, Sultanate Of	1	1.0%
Pakistan	1	1.0%
Saudi Arabia	9	8.7%
Singapore, Republic of	1	1.0%
South Korea	5	4.8%
Thailand	3	2.9%
Uganda	1	1.0%
Taiwan, Republic of China	28	26.9%
Vietnam	2	1.9%
Unknown	2	1.9%
<b>TOTAL</b>	<b>104</b>	<b>100.0%</b>

**Academic Majors for CAP / Pathways Students**

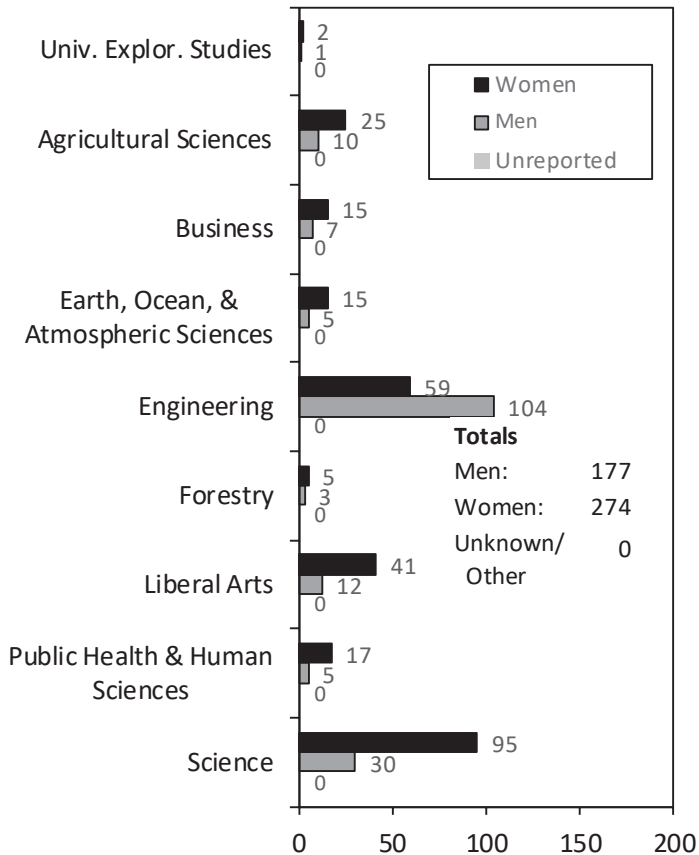
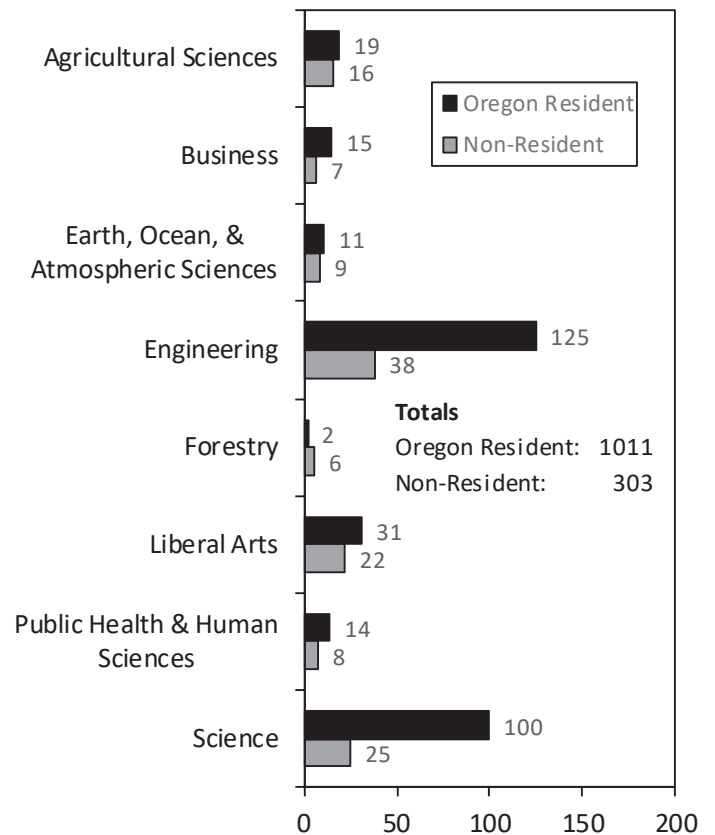
College / Major	Headcount
<b><u>College of Business</u></b>	
Business Administration	9
Design and Innovation Management	2
Pre-MBA	1
Pre-MSB	15
<b><u>College of Engineering</u></b>	
Chemical Engineering	1
Computer Science	5
General Engineering	4
<b><u>College of Forestry</u></b>	
Renewable Materials	1
<b><u>College of Pharmacy</u></b>	
Pharmaceutical Sciences	1
<b><u>College of Public Health and Human Sciences</u></b>	
Kinesiology	3
Public Health	1
<b><u>College of Science</u></b>	
Chemistry	1
General Science	1
Mathematics	1
<b>No Declared Major</b>	<b>6</b>
<b>TOTAL</b>	<b>52</b>

**Honors College**
**Enrollment By Primary College and Student Class Standing\***

College	Freshman	Sophomore	Junior	Senior	Total	% of Undergrad Enrollment for College
Agricultural Sciences	0	8	14	13	35	3.0%
Business	1	5	10	6	22	1.3%
Earth, Ocean, and Atmospheric Sciences	1	4	6	9	20	4.8%
Engineering	2	32	47	82	163	4.3%
Forestry	1	1	2	4	8	1.7%
Liberal Arts	1	9	17	26	53	2.8%
Public Health and Human Sciences	0	3	8	11	22	2.6%
Science	3	22	29	71	125	10.1%
University Exploratory Studies	0	0	3	0	3	1.0%
<b>TOTAL</b>	<b>9</b>	<b>84</b>	<b>136</b>	<b>222</b>	<b>451</b>	<b>3.8%</b>

**Honors College At CASCADES**

Honors College students at OSU Cascades are reported in the Cascades Campus section, under College and Major Enrollments, [page 24](#)

**By College and Sex**

**By College and Residency**


**OSU Extended Campus**
**Enrollment, Credit Hours, and FTE by Class Standing**
**Students Who Took Courses Through Ecampus\***

<u>Class Standing</u>	<u>Student Enrollment</u>	<u>Student Credit Hours</u>	<u>Student FTE</u>
Freshman	511	3219	214.6
Sophomore	1305	8738	582.5
Junior	2192	16279	1,085.3
Senior	4208	31758	2,117.2
Post Baccalaureate	1925	10607	707.1
Standalone Undergrad Cert	5	22	1.5
Non-Degree Undergrad	542	2763	184.2
<b>Total for Undergraduate</b>	<b>10688</b>	<b>73386</b>	<b>4,892.4</b>
Masters	719	3529	294.1
Doctoral	145	714	79.3
Non-Degree Graduate	409	1748	145.7
<b>Total for Graduate</b>	<b>1273</b>	<b>5991</b>	<b>519.1</b>
Doctor of Pharmacy	9	36	3.0
Veterinary Medicine	1	2	0.2
<b>Total for Professional Doctorate</b>	<b>10</b>	<b>38</b>	<b>3.2</b>
<b>GRAND TOTAL (Summer 2022)</b>	<b>11971</b>	<b>79415</b>	<b>5,414.7</b>
(Summer 2021)	11215	72614	4,977.0

\*Includes students that also took on-campus courses.

**Enrollment by Class Standing and Residency**
**Students Who Took Courses Only Through Ecampus\*\***

<u>Class Standing</u>	<u>Oregon Resident</u>	<u>Non-Resident</u>	<u>Total</u>
Freshman	153	294	447
Sophomore	481	644	1125
Junior	937	926	1863
Senior	1732	1750	3482
Post Baccalaureate	192	1588	1780
Standalone Undergrad Cert	1	4	5
Non-Degree Undergrad	85	415	500
<b>Total for Undergraduate</b>	<b>3581</b>	<b>5621</b>	<b>9202</b>
Masters	317	321	638
Doctoral	32	85	117
Non-Degree Graduate	114	252	366
<b>Total for Graduate</b>	<b>463</b>	<b>658</b>	<b>1121</b>
Doctor of Pharmacy	6	1	7
Veterinary Medicine	1	-	1
<b>Total for Professional Doctorate</b>	<b>7</b>	<b>1</b>	<b>8</b>
<b>GRAND TOTAL (Summer 2022)</b>	<b>4051</b>	<b>6280</b>	<b>10331</b>
(Summer 2021)	3418	5564	8982

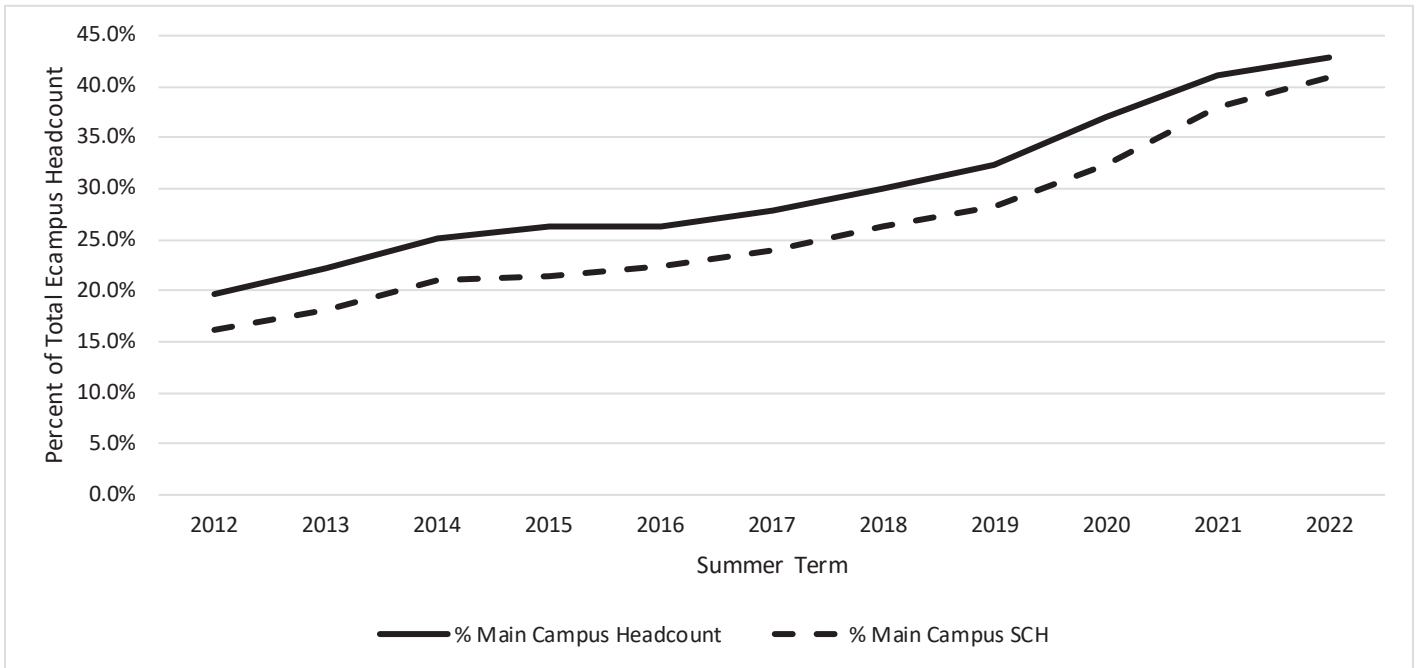
\*\*Table indicates students enrolled only in Ecampus-offered courses; i.e., students are not enrolled in any on-campus courses.

**Student Credit Hours by College Offering SCH and Class Standing**

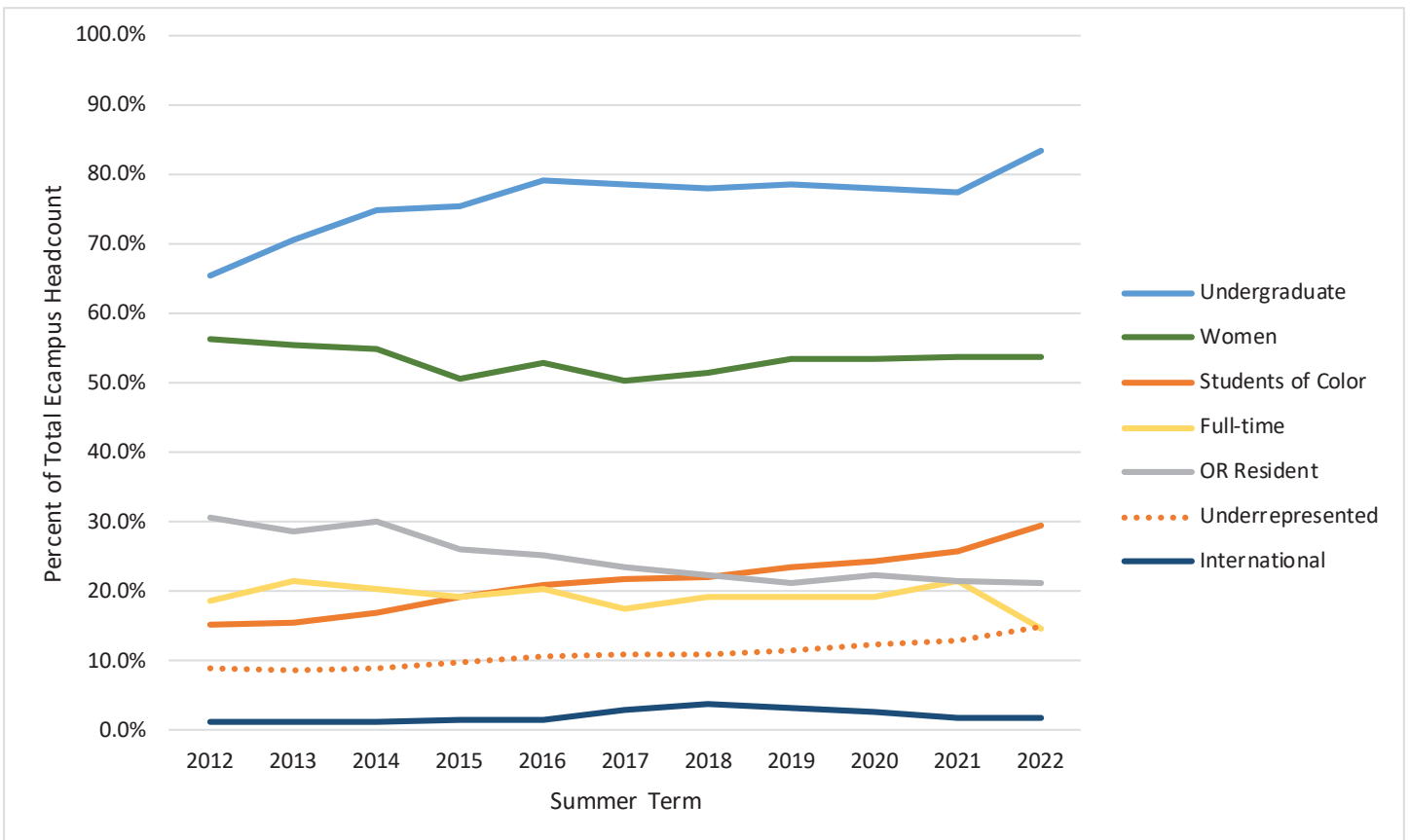
College	Freshman	Sophomore	Junior	Senior	Post Bac	Stand-alone Undergrad Cert	Non-Degree Undergrad	Undergrad Total	Master	Doctorate	Non-Degree Grad	Grad Total	Professional Doctorate	TOTAL
AG	361	1019	2013	5432	745	10	275	9855	220	7	464	691	-	10546
BUS	17	733	2054	3738	94	4	30	6670	696	-	31	727	33	7430
EOAS	115	360	785	1486	178	-	50	2974	4	0	32	36	-	3010
ED	21	60	81	150	27	-	24	363	1406	567	235	2208	-	2571
ENGR	239	618	1674	3228	8045	4	126	13934	412	29	61	502	-	14436
FOR	12	75	192	704	115	-	3	1101	175	0	58	233	-	1334
LA	1394	3345	5796	10226	651	4	1338	22754	322	32	303	657	-	23411
PHARM	2	16	18	42	0	-	6	84	-	-	6	6	-	90
PHHS	231	618	1329	3018	44	-	76	5316	167	10	37	214	3	5533
SCI	820	1884	2324	3698	708	-	796	10230	39	0	492	531	-	10761
ALS <sup>1</sup>	7	6	3	8	0	-	39	63	3	3	12	18	-	81
GRAD	-	-	0	0	0	-	0	0	85	66	17	168	2	170
HC <sup>2</sup>	-	4	10	28	-	-	-	42	-	-	-	0	-	42
<b>Total SCH</b>	<b>3219</b>	<b>8738</b>	<b>16279</b>	<b>31758</b>	<b>10607</b>	<b>22</b>	<b>2763</b>	<b>73386</b>	<b>3529</b>	<b>714</b>	<b>1748</b>	<b>5991</b>	<b>38</b>	<b>79415</b>
<b>Total FTE</b>	<b>214.6</b>	<b>582.5</b>	<b>1085.3</b>	<b>2117.2</b>	<b>707.1</b>	<b>1.5</b>	<b>184.2</b>	<b>4892.4</b>	<b>294.1</b>	<b>79.3</b>	<b>145.7</b>	<b>519.1</b>	<b>3.2</b>	<b>5414.7</b>

<sup>1</sup>Academic Learning Services. <sup>2</sup>Honors College.

**Ecampus Enrollment (using Student Primary Campus, not course location) as a Percentage of Main Campus**



**10 Year Trend: Demographic Percentage of Ecampus Students**



# CASCADES CAMPUS ENROLLMENT

## Enrollment at-a-Glance

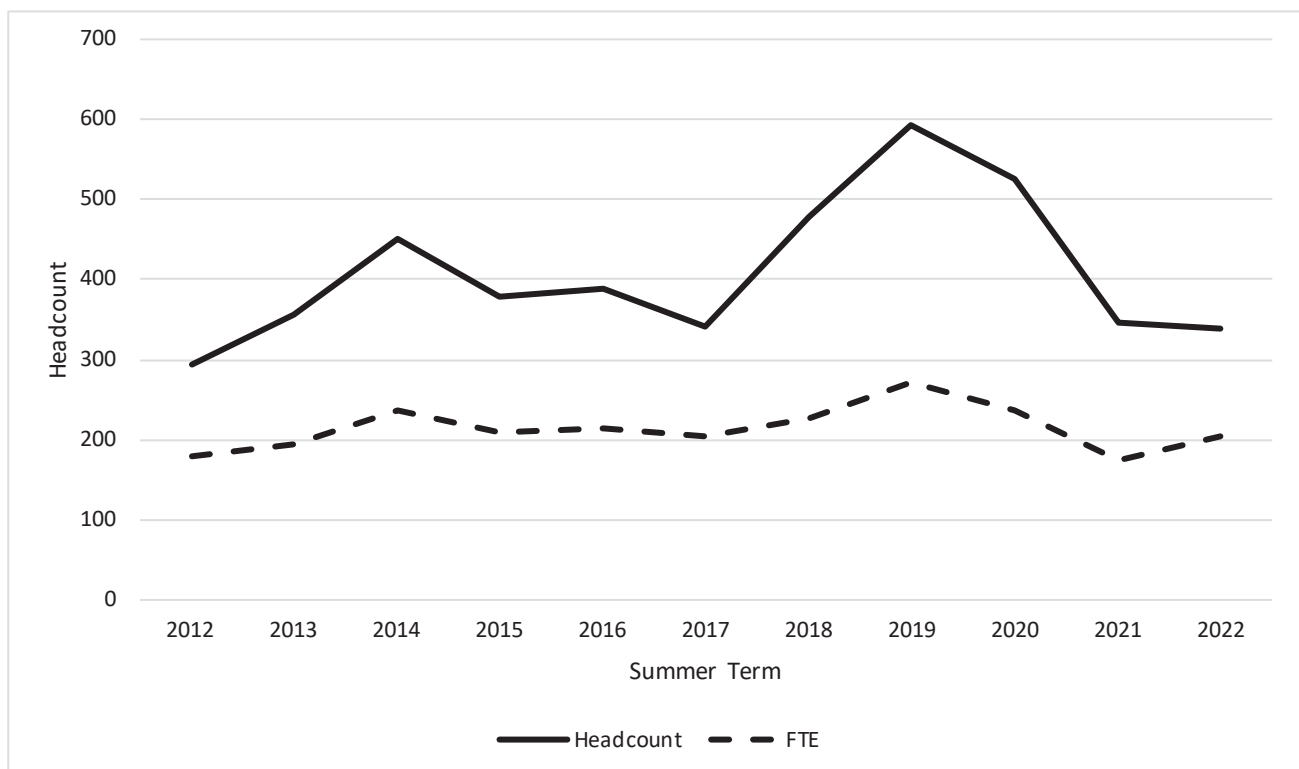
	<u>2021</u>	<u>2022</u>	<u>Change</u>	<u>% Change</u>
<b>Headcount</b>	345	<b>338</b>	-7	-2.0%
<b>Student FTE*</b>	173.0	<b>204.0</b>	31.0	17.9%
<b>Student Credit Hours*</b>	2259	<b>2590</b>	331	14.7%

	<u>2021</u>	<u>2022</u>	<u>Change</u>	<u>% Change</u>
<b>COCC Enrolled Students (OSU Admitted)**</b>				
Headcount	19	<b>33</b>	14	73.7%
Student FTE	8.6	<b>15.2</b>	6.6	76.7%
<b>Total Students Receiving Services</b>				
Headcount	364	<b>371</b>	7	1.9%
Student FTE	181.6	<b>219.2</b>	37.6	20.7%

\* Based on active registrations on the census date. Headcount includes students enrolled after the first day of instruction.

\*\* Source: OSU-Cascades

### Summer Census 10 Year Trend: Cascades Campus Headcount and FTE



**Headcount Demographics**

	2021		2022		Change	
	Headcount	Percent	Headcount	Percent	Net Change	Percent Change
<b>Undergraduate</b>	174	50.4%	<b>141</b>	<b>41.7%</b>	-33	-19.0%
Degree Seeking	167		<b>131</b>		-36	-21.6%
2nd Degree (post bac)	2		<b>8</b>		6	300.0%
Non Degree	5		<b>2</b>		-3	-60.0%
<b>Graduate</b>	171	49.6%	<b>153</b>	<b>45.3%</b>	-18	-10.5%
Masters only	128		<b>110</b>		-18	-14.1%
Doctoral	1		<b>0</b>		-1	-100.0%
Non Degree	42		<b>43</b>		1	2.4%
<b>Professional Doctorate*</b>	n/a	n/a	<b>44</b>	<b>13.0%</b>	44	n/a
<b>Full-time</b>	91	26.4%	<b>121</b>	<b>35.8%</b>	30	33.0%
<b>Part-time</b>	254	73.6%	<b>217</b>	<b>64.2%</b>	-37	-14.6%
<b>Oregon Resident</b>	282	81.7%	<b>264</b>	<b>78.1%</b>	-18	-6.4%
<b>Non Resident</b>	63	18.3%	<b>74</b>	<b>21.9%</b>	11	17.5%
<b>Women</b>	227	65.8%	<b>206</b>	<b>60.9%</b>	-21	-9.3%
<b>Men</b>	118	34.2%	<b>127</b>	<b>37.6%</b>	9	7.6%
<b>Unreported Sex</b>	n/a	n/a	<b>5</b>	<b>1.5%</b>	5	n/a
<b>Students of Color</b>	61	17.7%	<b>65</b>	<b>19.2%</b>	4	6.6%
<b>Underrepresented Students**</b>	37	10.7%	<b>47</b>	<b>13.9%</b>	10	27.0%

\*Doctoral are PhD/EdD; Professional doctorates are PharmD, DVM, and DPT

\*\*Students of Color includes Asian and Multiracial but excludes International. Underrepresented students are ethnic groups that attend college at lower rates than their proportion of the US population

<b>International</b>	7		<b>4</b>	<b>1.2%</b>	-3	-42.9%
<b>First Generation College</b>	49		<b>32</b>		-17	-34.7%
<b>% of Undergraduates</b>	28.2%		<b>22.7%</b>			

**VETERANS**

<b>Total</b>	23	6.7%	<b>24</b>	<b>7.1%</b>	1	4.3%
<b>Undergraduate</b>	17		<b>17</b>		0	0.0%
<b>% of Undergraduates</b>	9.8%		<b>12.1%</b>			
<b>Graduate/Prof Doctorate</b>	6		<b>7</b>		1	16.7%
<b>% of Graduate/Prof Doctorate</b>	3.5%		<b>3.6%</b>			

**Enrollment by Class Standing**

		2021	2022	Change
Freshman	Headcount	11	8	-27.3%
	Credit Hours	77	45	-41.6%
	FTE*	5.1	3.0	-41.2%
Sophomore	Headcount	23	16	-30.4%
	Credit Hours	95	69	-27.4%
	FTE*	6.3	4.6	-27.0%
Junior	Headcount	48	40	-16.7%
	Credit Hours	277	205	-26.0%
	FTE*	18.5	13.7	-26.1%
Senior	Headcount	85	67	-21.2%
	Credit Hours	435	354	-18.6%
	FTE*	29.0	23.6	-18.6%
Postbac Degree Seeking	Headcount	2	8	300.0%
	Credit Hours	11	25	127.3%
	FTE*	0.7	1.7	138.1%
Non-degree Undergraduate	Headcount	5	2	-60.0%
	Credit Hours	23	11	-52.2%
	FTE*	1.5	0.7	-51.1%
<b>Undergraduate Subtotal</b>	Headcount	<b>174</b>	<b>141</b>	<b>-19.0%</b>
	Credit Hours	<b>918</b>	<b>709</b>	<b>-22.8%</b>
	FTE*	<b>61.2</b>	<b>47.3</b>	<b>-22.8%</b>
Masters	Headcount	128	110	-14.1%
	Credit Hours	1251	1030	-17.7%
	FTE*	104.3	85.8	-17.7%
Non-Degree Graduate	Headcount	42	43	2.4%
	Credit Hours	87	147	69.0%
	FTE*	7.3	12.3	67.8%
Doctoral	Headcount	1	0	-100.0%
	Credit Hours	3	0	-100.0%
	FTE*	0.3	0.0	-100.0%
<b>Graduate Subtotal</b>	Headcount	<b>171</b>	<b>153</b>	<b>-10.5%</b>
	Credit Hours	<b>1341</b>	<b>1177</b>	<b>-12.2%</b>
	FTE*	<b>111.9</b>	<b>98.1</b>	<b>-12.3%</b>
<b>Professional Doctorate</b>	Headcount	0	44	n/a
	Credit Hours	0	704	n/a
	FTE*	0.0	58.7	n/a
<b>TOTAL</b>	Headcount	<b>345</b>	<b>338</b>	<b>-2.0%</b>
	Credit Hours	<b>2259</b>	<b>2590</b>	<b>14.7%</b>
	FTE*	<b>173.1</b>	<b>204.0</b>	<b>17.9%</b>

\* FTE divisor: Undergraduate, 15 credits; Graduate, 12 credits

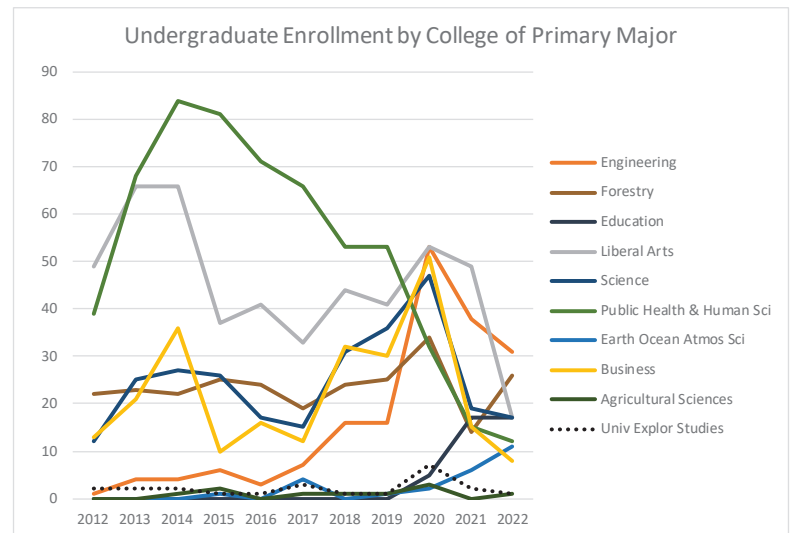
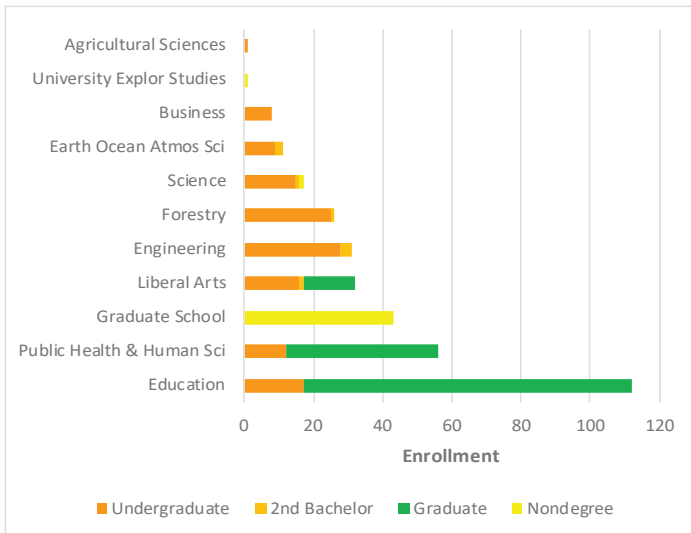
### College and Major Enrollments

#### College/General Academic Unit Enrollment by Student Level

COLLEGE	DEGREE SEEKING			CERTIFICATE		NONDEGREE	Total
	Undergraduate	2 <sup>nd</sup> Bachelor	Graduate	Undergraduate	Graduate	Nondegree	
Agricultural Sciences	1	0	0	0	0	0	1
Business	8	0	0	0	0	0	8
Earth Ocean Atmos Sci	9	2	0	0	0	0	11
Education	17	0	95	0	0	0	112
Engineering	28	3	0	0	0	0	31
Forestry	25	1	0	0	0	0	26
Liberal Arts	16	1	15	0	0	0	32
Public Health & Human Sci	12	0	44	0	0	0	56
Science	15	1	0	0	0	1	17
University Explor Studies	0	0	0	0	0	1	1
Graduate School	0	0	0	0	0	43	43
<b>TOTAL 2022</b>	<b>131</b>	<b>8</b>	<b>154</b>	<b>0</b>	<b>0</b>	<b>45</b>	<b>338</b>
Total 2021	167	2	129	0	0	47	345

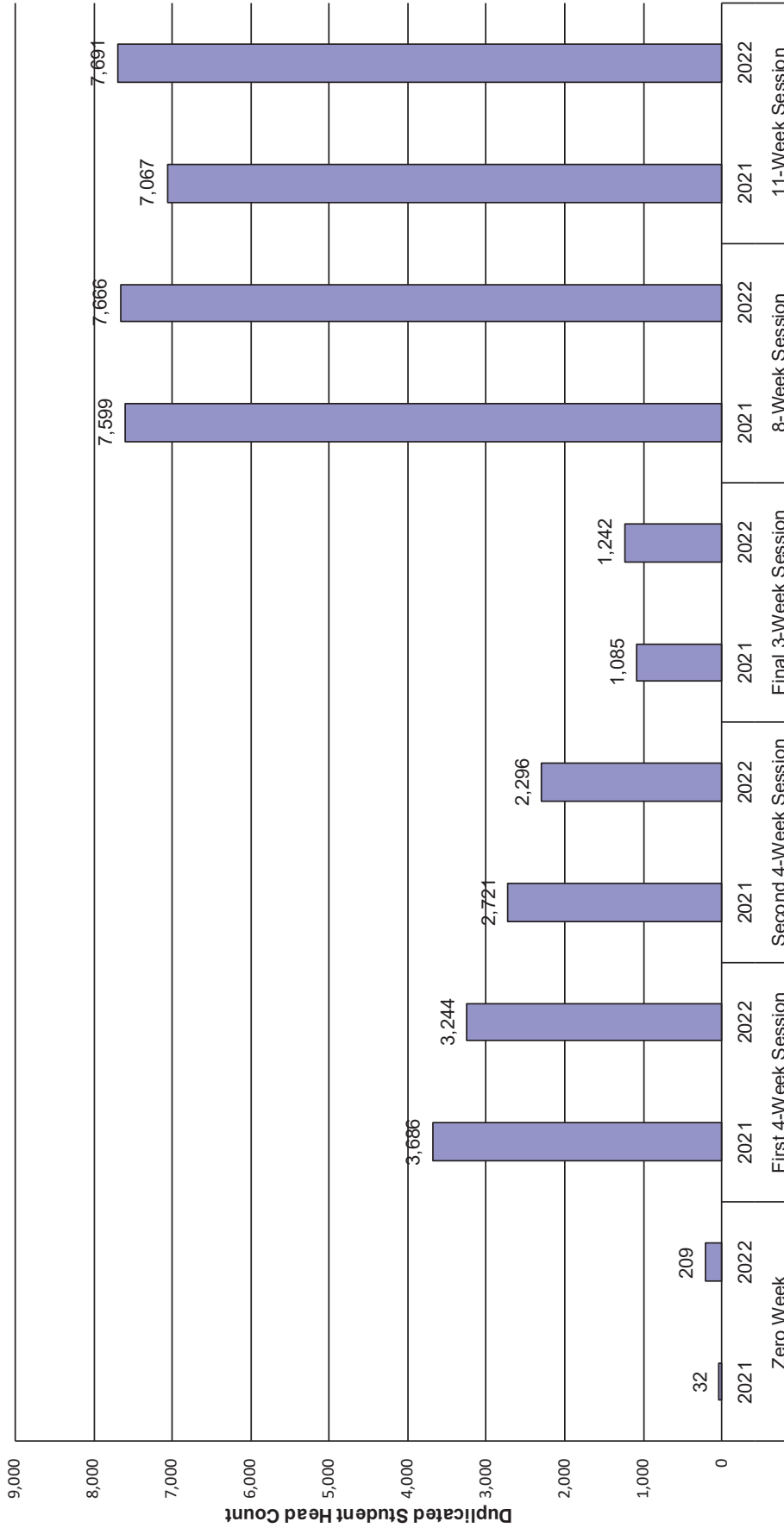
<b>Honors College*</b>	<b>2</b>
<b>% of Undergrad Enrollment</b>	<b>1.5%</b>

\*Headcounts also included in primary colleges above.





## Summer Session Comparisons: 2021 and 2022



### Summer 2021

Zero week (Intercession) (Session 6).....June 14 - 18  
 Eleven week classes (Session 1).....June 21 - September 3  
 First four weeks (Session 2).....June 21 - July 16  
 Eight week Classes (Session 3).....June 21 - August 13  
 Second four weeks (Session 4).....July 19 - August 13  
 Final three week (Session 5).....August 16 - September 3

### Summer 2022

Zero week (Intercession) (Session 6).....June 13 - 16  
 Eleven week classes (Session 1).....June 20 - September 2  
 First four weeks (Session 2).....June 20 - July 15  
 Eight week Classes (Session 3).....June 20 - August 12  
 Second four weeks (Session 4).....July 18 - August 12  
 Final three week (Session 5).....August 15 - September 2